

10 YEAR MANUFACTURER'S LIMITED WARRANTY

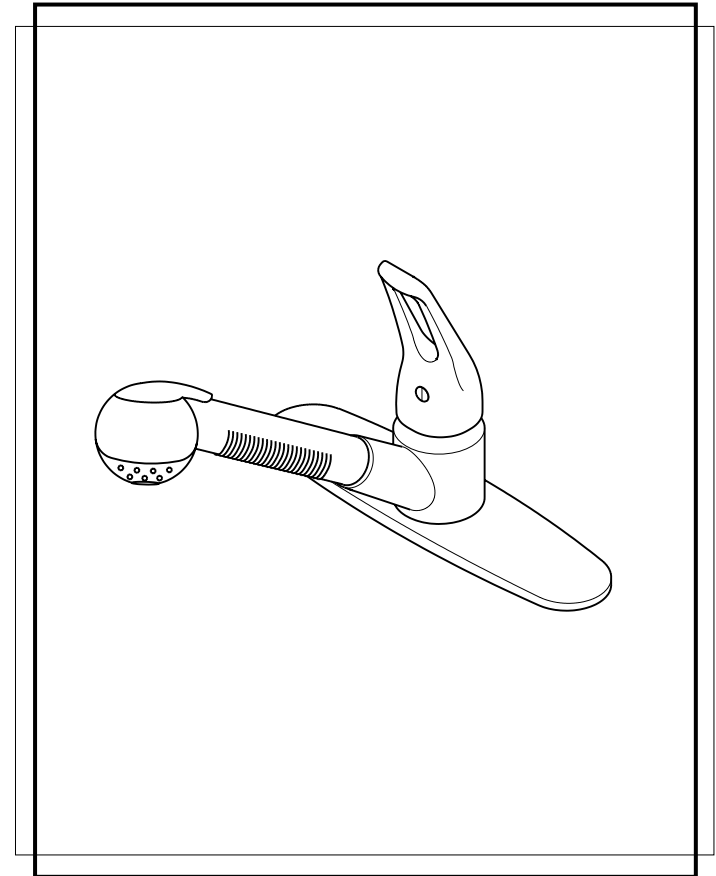
All parts of this Elements Of Design faucet are warranted to the original retail purchaser to be free from defects in material and workmanship for a period of ten(10) years from the date of purchase as shown on the purchaser's receipt. This warranty is limited to defective parts only, labor charges and/or damage resulting from improper installation, repair or replacements, as well as incidental and consequential damages connected therewith are excluded.

Any damage to this faucet as a result of misuse, abuse, neglect, accident for improper installation or any use not consistent with the instructions furnished by Elements of Design, will void this warranty. Replacement parts can be obtained from your local dealer.

CAUTION!!!

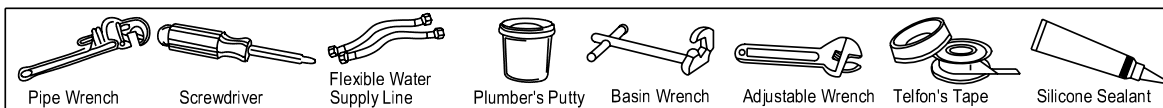
1. Water lines must be completely flushed before use, to avoid bris & clogs in your water system leading to mal-function and reduction of water flow.
2. Warranty to be void if water lines are not flushed before use of new faucet.
3. Use of abrasives of any strength may damage the finish of your faucet and void this warranty.

CODE APPROVAL: LA#M-000018

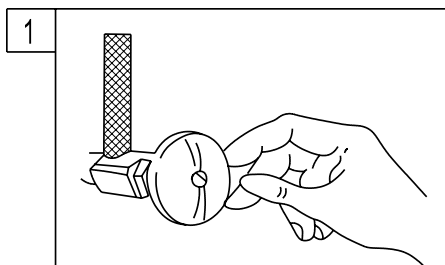


T 909.465.6687 F 909.548.6843 1877.FAUCET.1
www.eodfaucet.com
email: support@eodfaucet.com

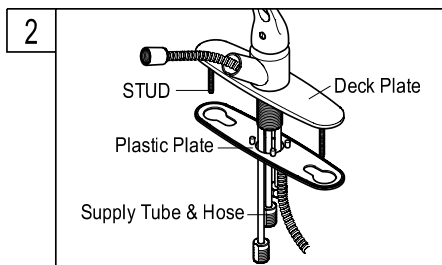
INSTALLATION SHEET



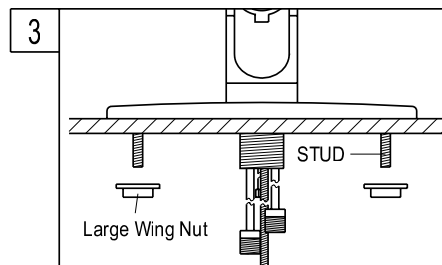
NOTE: 1. USE TEFLON TAPE ON ALL THREADED CONNECTIONS
2. FLUSH LINE BEFORE FAUCET INSTALLATION TO REMOVE DEBRIS IN LINES.
3. NO PLUMBER'S PUTTY ON ANY FINISH TO CORRODE FINISH OF FAUCET SURFACE.



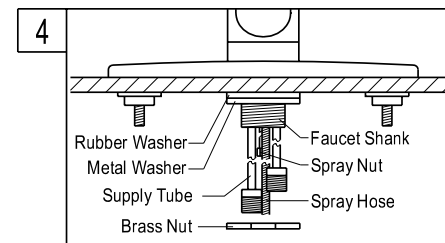
1. Turn off water supply valves under the sink. Cover the sink drain so that no small parts are lost down it. Remove your old faucet. Caution: Do not damage your old water supply lines. Clean the surface of the sink in preparation for installing the new faucet.



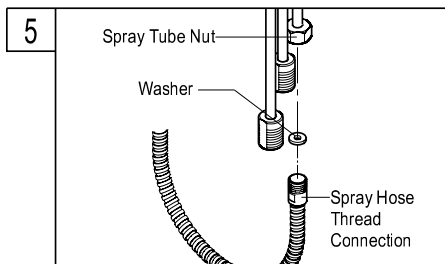
2. Place deck plate in proper position, put hose and supply tubes through center hole of deck plate. Install hold down studs onto brass deck plate by sliding stud into the notched receptacle on the base plate. Place plastic plate under the deck plate smooth side down.



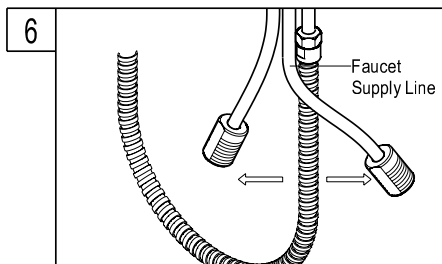
3. Fit faucet onto the sink. Secure faucet by threading and tightening wing-nuts onto studs.
NOTE: Tighten the nuts hand and be careful not to over tighten.



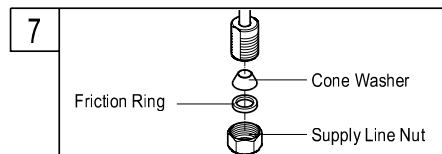
4. Pull the stainless steel hose up through the faucet until the attachment nut is up against the bottom of the faucet shank. Install rubber washer and metal washer on the faucet shank and secure with brass nut, tighten wrench tight.
(Have patience when slipping the brass nut past the water tube connections, it will fit past them.)



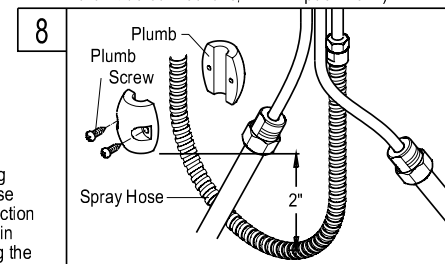
5. Wrap teflon on the spray hose thread connection. Connect the spray hose with spray tube and secure with spray tube nut. Tighten wrench tight carefully.
NOTE: Be sure there is a washer inside the spray tube nut before connecting the spray hose with the spray tube.



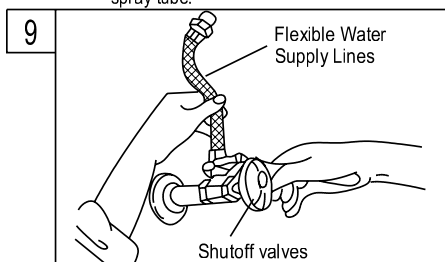
6. Note: if faucet supply lines need to be bent, grip tube at point of bend with right hand, firmly and slowly pull tube into position using rounded bend with left hand. Extreme care must be exercised. Follow instructions exactly. Kinked tubes will void warranty.



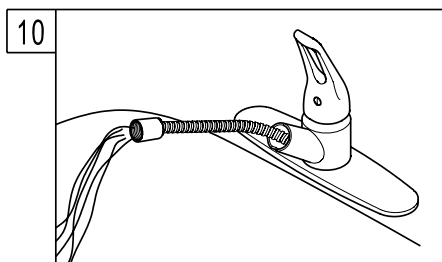
7. If you have 3/8" supply tubes, use the 3/8" friction ring that is in the parts bag. If you have 1/2" supply tubes, use the 1/2" friction ring that is in the parts bag. Place the friction ring and cone washer into the supply line nut as shown in the above illustration, and then connect. If you are using the supply line nuts that come with this faucet, HAND TIGHTEN ONLY, AND BE CAREFUL NOT TO OVER TIGHTEN. One full wrap of Teflon tape is required on all Threaded connections.
Caution: Do not let the tubing revolve or bend when tightening.



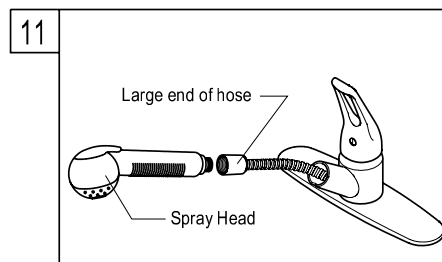
8. Install plumb on the spray hose. Adjust the plumb at least 2" higher than the bottom line as illustrated. Fix with screws tightly.



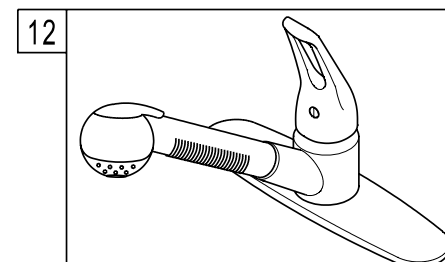
9. After installation is completed, turn on hot and cold water supply valves. (Be sure the faucet is in off position before turning on the supply valves) Then check for any leaks, especially at hook-ups to supply lines. Tightening nuts slightly will stop and minor leaks.



10. Pull the spray hose through the spout and secure the end into the drain, or have a secure party hold the spray hose, and turn on the faucet and flush for one minute.



11. Attach spray head to the large end of the stainless steel hose. Insert spray head onto faucet body.



12. If properly installed and maintained. This quality product will provide you with years of trouble-free operation.