

CEILING FAN INSTALLATION

Ceiling Fan Installation

To our clients: Thank you for buying our product, please read this instruction book carefully before you start installing the Ceiling fan.

Introduction

This product is manufactured with the strictest quality and best selling abroad. You can feel the comfortable natural air flow, keep air circulating by our product.

In summer, save 30% power by using ceiling fan and air conditioner at the same-time, you will feel cooler just like 25℃ when you adjust to 28℃ on the airconditioner.

In winter, you can turn on the reverse function to make the room warmer when the hot air is working by the air flow from down to up.

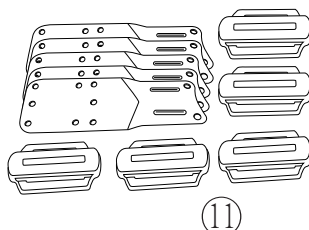
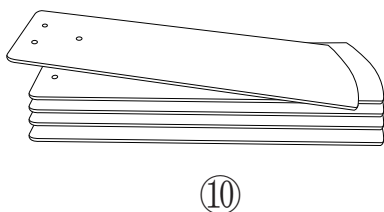
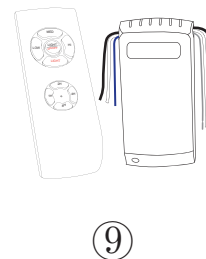
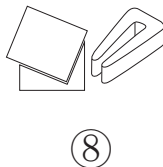
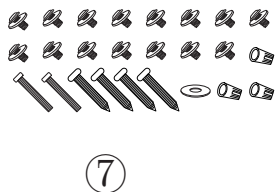
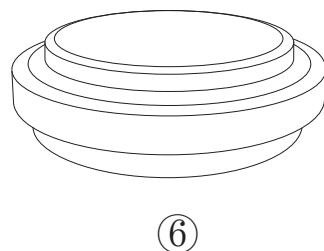
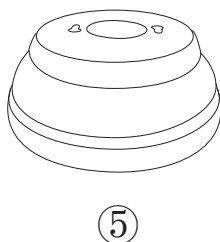
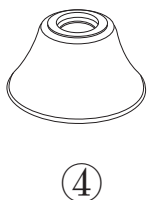
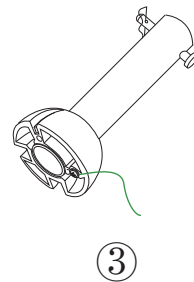
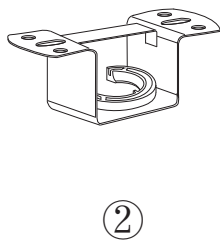
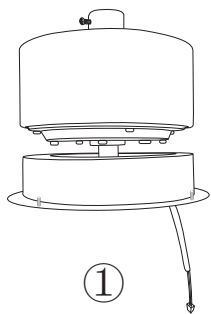
According to the pictures in the manual, you can install the ceiling fan more easily. And the pictures may be a little different from the product, but it doesn't affect your installation.

Attention

1. Ceiling fan must be installed by a qualified installer, don't be installed by yourself. In order to avoid electric shock please follow the step: turn off the electric power, connect the ground wire→neutral wire? live wire, when it need to be disassembled, remove live wire→neutral wire? ground wire.
2. Make sure all the accessories and parts are complete through the manual before installation.
3. All screw must be tightened during installation process.
4. The blades don't be touched by any other things to avoid danger.
5. Choose the right spot to install the ceiling fan. At least 2.3 meters distance from the floor to the blades, to prevent accidental occurrence of fan blade collision.
6. Water and detergent is not allowed in cleaning, please dust the ceiling fan by dry cloth or slight wet cloth.
7. Cut-off power before cleaning.
8. Don't repair by yourself when it is broken, it must be repaired by the professional service engineer.

— Notice: Do not repeatedly turning the ceiling fan on and off—

Package list



① Motor

④ Down canopy

⑦ Screws

⑩ Blades

② Hanging bracket

⑤ Upper canopy

⑧ Balance pack

⑪ Blade holder

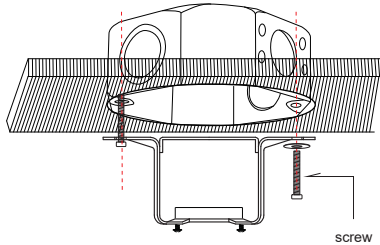
③ Down Rod

⑥ Light Kit

⑨ Remote Control Unit

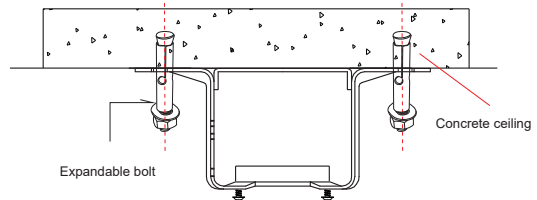
⑫ Instruction book

Hanging bracket installation



Octagon box ceiling

Use the hanging bracket to fix in the octagon box.



Concrete ceiling

Drill a hole at the ceiling for the proper depth with (M8) drilling bit, fix the expandable screw in it. Fix the hanging bracket by tightening the nut to expandable bolt.

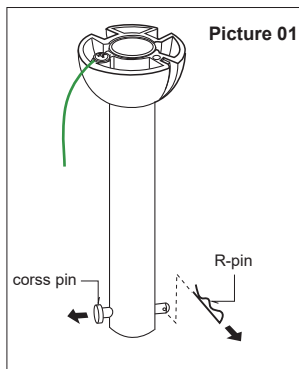


Notice

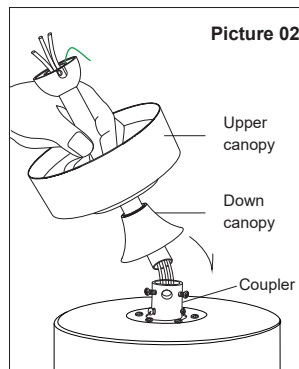
Choose the best way according to ceiling material.

After installing, it needs to be tested by hand whether it can support at least 30 kilograms.

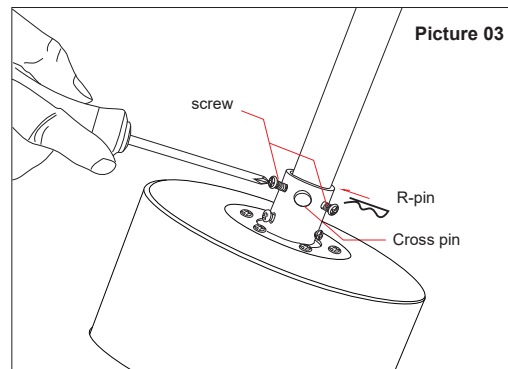
Upper canopy and rod installation



Picture 01



Picture 02

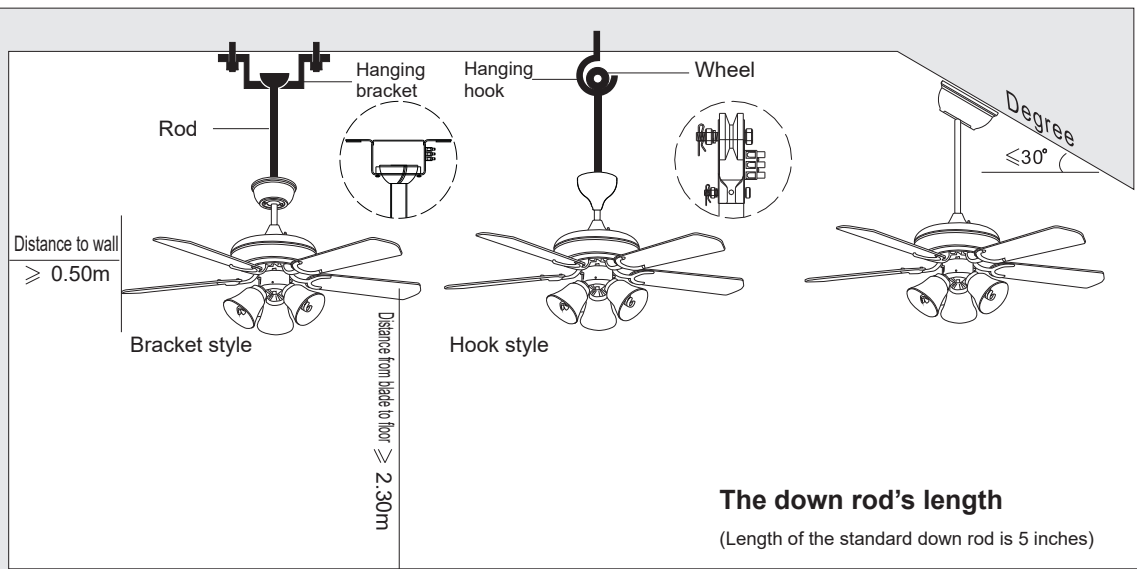
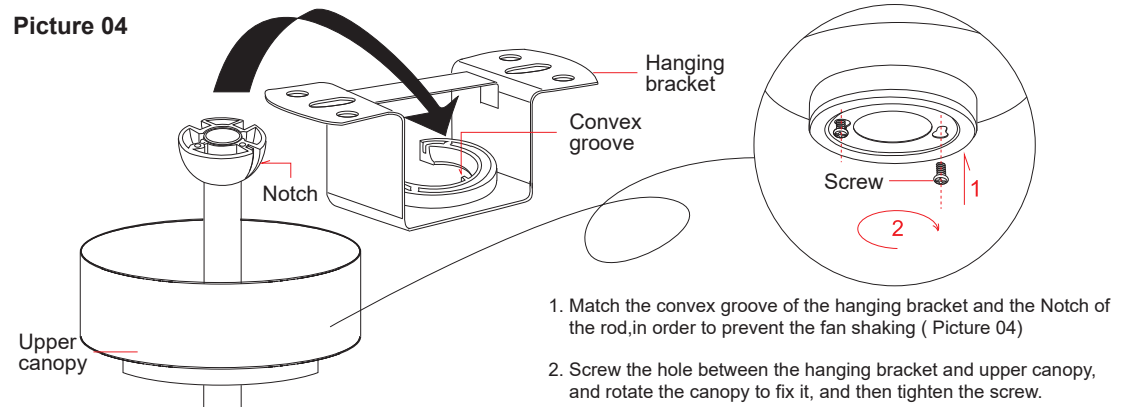


Picture 03

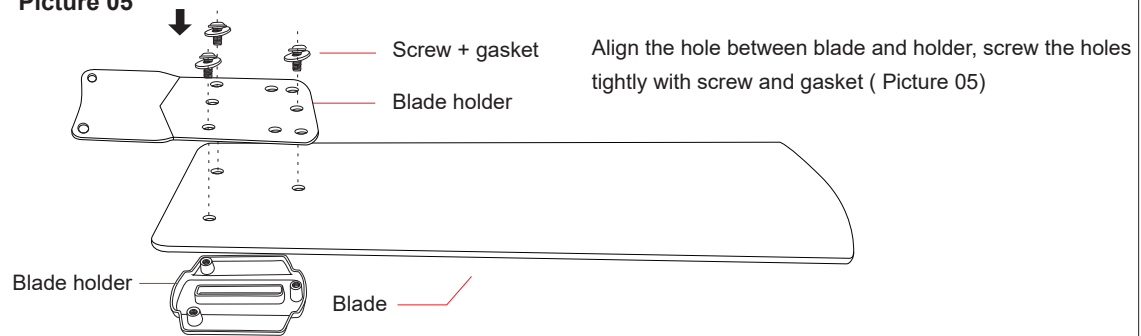
1. Pull out the R-pin from the rod (Picture 01)
2. Trough the upper canopy and down canopy by the rod (Picture 02) , and the wire through into the hole of the rod, and insert the rod into the coupler (loose the screw of the coupler before inserting), align the holes between the rod and the coupler, through the holes by the cross pin and fix the cross pin by R-pin (Picture 03). Finally, tighten the screws of the coupler and cover the coupler by down canopy.

Fixing and Mounting height

Picture 04



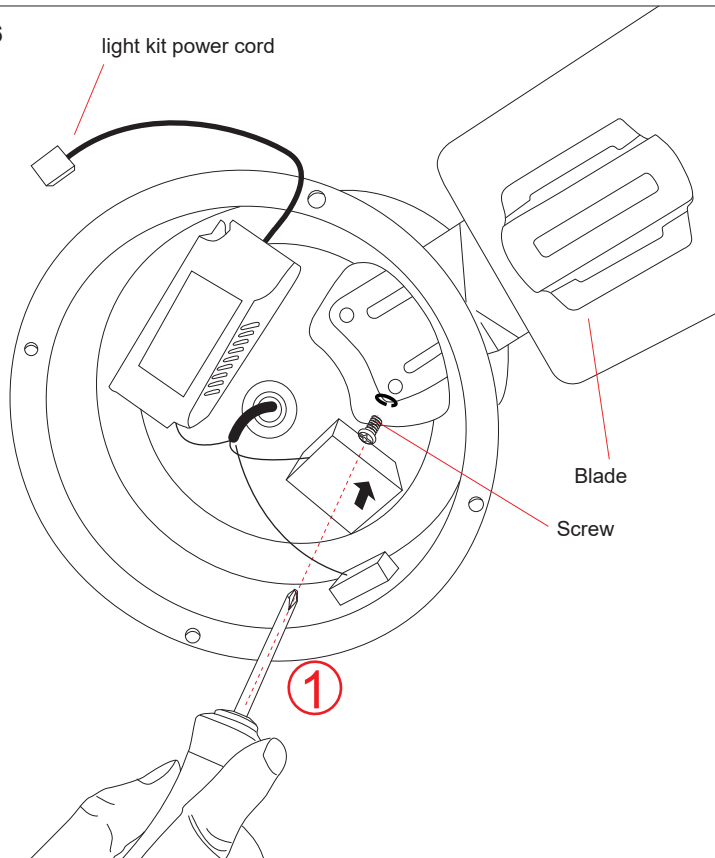
Picture 05



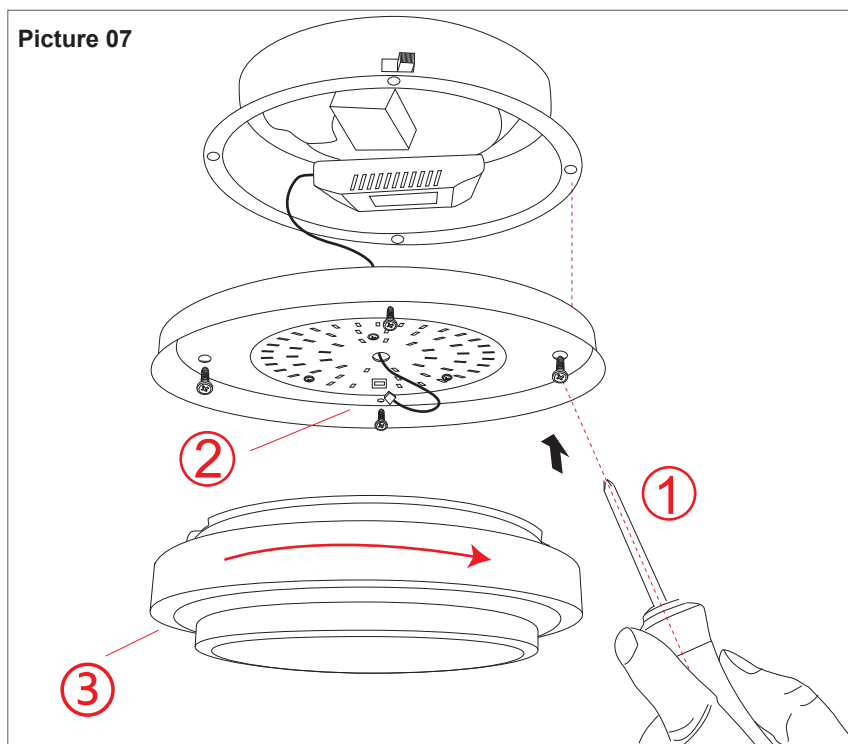
Don't make the blade deformed when you install it, otherwise, it will wobble because of imbalance.

Blade holder and the light kit installation

Picture 06



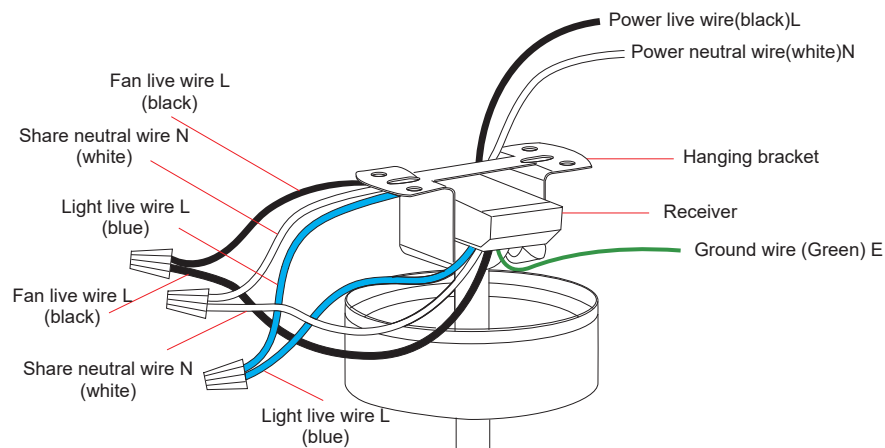
Picture 07



Remote control and wall control circuit diagram

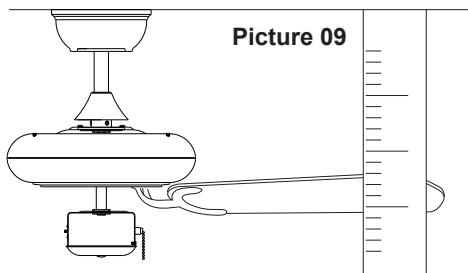
Remote control circuit diagram

Picture 08



Balancing

Without the artificial cause, if the fan encounters wobbling when it's done, do the following 3 steps:

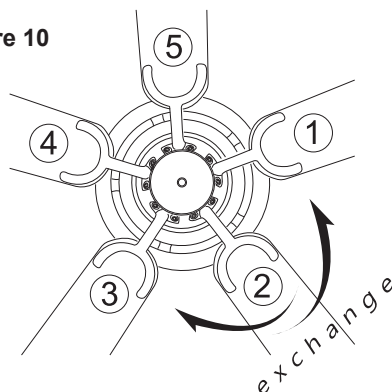


Picture 09

1. Measure the height

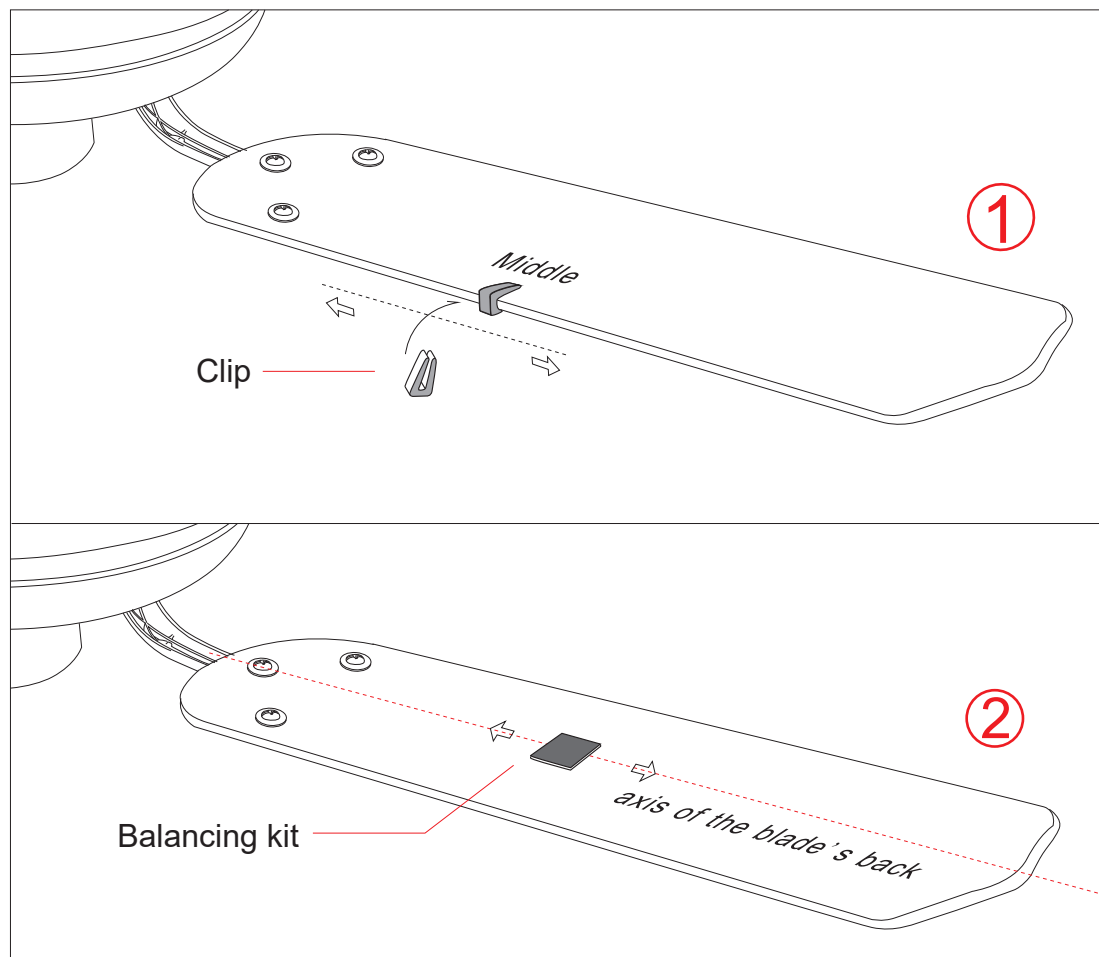
Fixed a point, record the value from one blade to ceiling (Picture 09), and measure other blades, whether other blades is the same distance. (if not, check the screw of blade holder whether loose and tighten it)

Picture 10



2. Exchange the blade

Try to exchange blade 1 and blade 3 (Picture 10), or blade 2 and blade 4, or blade 3 and blade 5. Check if it is better after exchanging.



3. Balancing adjustment

If the problem still not be solved after the two steps, you need to take use of the balance parts and follow the steps: firstly, set the fan to the fastest speed, to make the strongest wobbling, then turn it off, choose one blade, the edge is attached by the clip . Start up again the ceiling fan to fastest speed, observe if the state is better , if not,do the same thing on another blade,repeat the step until it's better. When you find out which blade makes the fan better, move the clip right and left and start up the fan, to find out the perfect point and mark it, remove the clip and sick the balancing kit to central axis of blade's back, position of balancing kit shall be consistent with the point.

Trouble shooting

1.Motor can't move

- ① Check the wires (insulating layer of the wire maybe caught by the terminal),check whether all the inner wires and terminals are loose.
- ② Input voltage maybe lower than the rate voltage, the rate data is 110V-50Hz, please turn off the power before checking.
- ③ Make sure the plastic kit into the motor must be pick out (the kit is to stop the motor moving or rotating during the transportation)

2.Noise

- ① All the screw must be tightened.
- ② Check if the fan crash some obstacles when it's moving.
- ③ Make sure the screw between hanging bracket and ceiling is tight, shockproof must be installed on it.

3.Light doesn't work

- ① check the light switch.
- ② check if the light's wires and terminals are loose.
- ③ check if the bulb or LED source is work
- ④ check the remote control can work or not

4.Fan shaking

- ① Hemisphere of the rod must be tighten, the groove of the hemisphere must be embed into the bulge of the hanging bracket.
- ② Two screws in the coupler must be tighten.
- ③ Check if all the screws of the blades and blade holders are tight.
- ④ Follow the step in the manual to adjust the fan.

WARRYANTY CARD

Product Information	Model	
Machine Information	Selling Unit	
	Customer Service Email	
	Purchase Date	
User Information	User Email	
	Contact No.	

For detailed information, please refer to the following warranty terms. SN:

<h2>Warranty terms</h2> <p>The ceiling fan of this company strictly abides by relevant regulations of household appliances warranty, and we are devoting ourselves to providing satisfactory after-sale services for distinguished customers.</p> <p>The warranty term of fan motor is ten years, while the warranty term of other parts is one year. When any quality related issue arises out of the fan, customers need to fill in the [Warranty Card] and take a picture to be sent to the customer service email</p> <p>Warranty service is only limited to quality issue(s) under normal use. Any and all damages due to abnormal use, such as the installation and use without following the manual, exceeding the normal voltage ($\leq 110V \pm 10$), repair and modification without permission from this company, and water entering the fan, are out of the warranty scope, and the responsibility should be taken by the users.</p> <p>The warranty term starts to count upon confirmation of goods reception by customers. Warranty voucher is a guarantee for consumers to enjoy the right of warranty, so please keep it properly. The warranty voucher should be filled in with seriousness; please do not alter, or otherwise it is invalid.</p>
