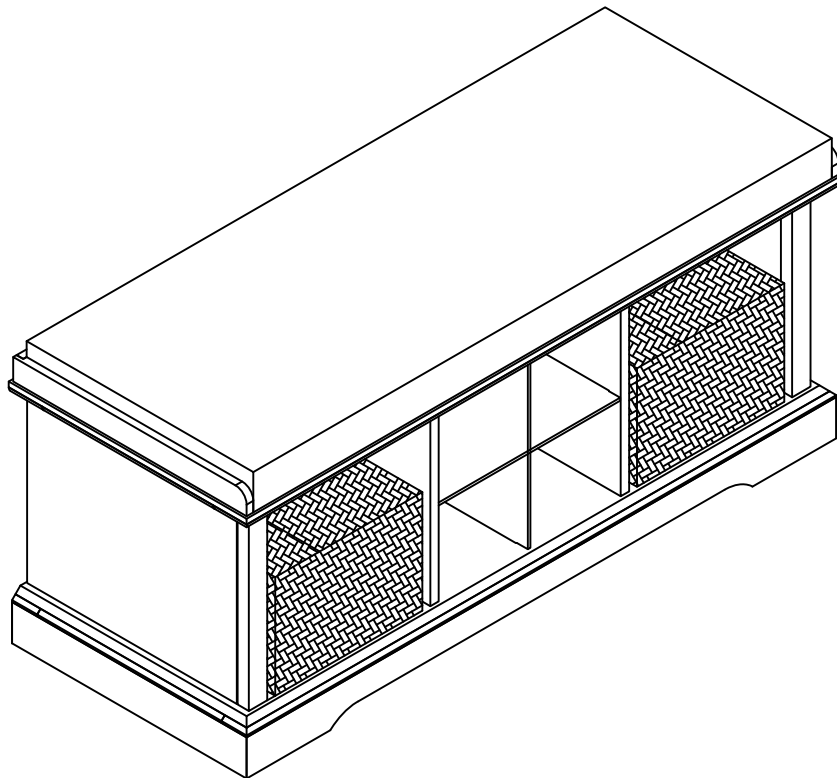




Brennan Entryway Bench
CF6003



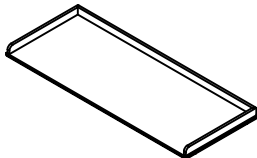
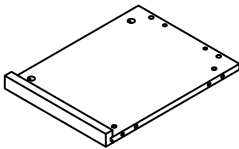
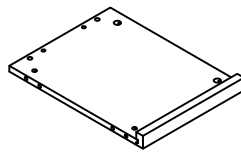
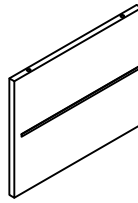
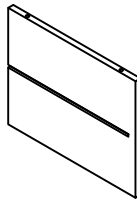
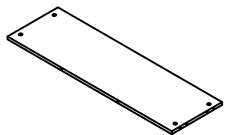
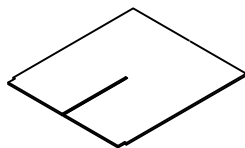
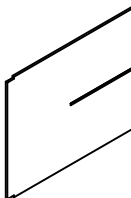
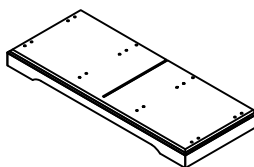
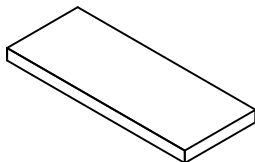
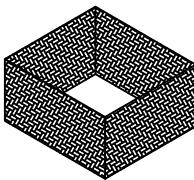
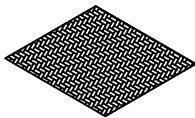


Congratulations! You have purchased a stylish piece of Crosley Furniture. We strived to provide fine furniture products, built with quality materials and hand finished details. Please carefully follow the assembly instructions to ensure your furniture is assembled correctly to provide long lasting enjoyment.

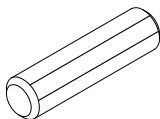
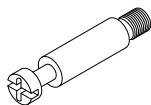

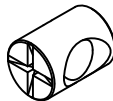
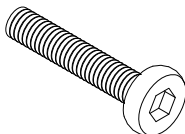
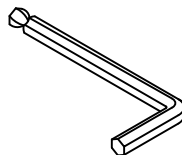
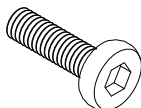
Should you experience any missing or damaged parts, **do not return to the store.** Please visit our website **www.Crosleyfurniture.com**, or contact us directly at 800-815-4796.

Care: Use a soft clean cloth that will not scratch the surface when dusting. Use of furniture polish is not necessary. Should you choose to use polishes, test in an inconspicuous area first. Use of solvents of any kind may damage your furniture's finish. To clean, simply use a soft clean cloth moistened with lukewarm water, then buff with a dry soft clean cloth.

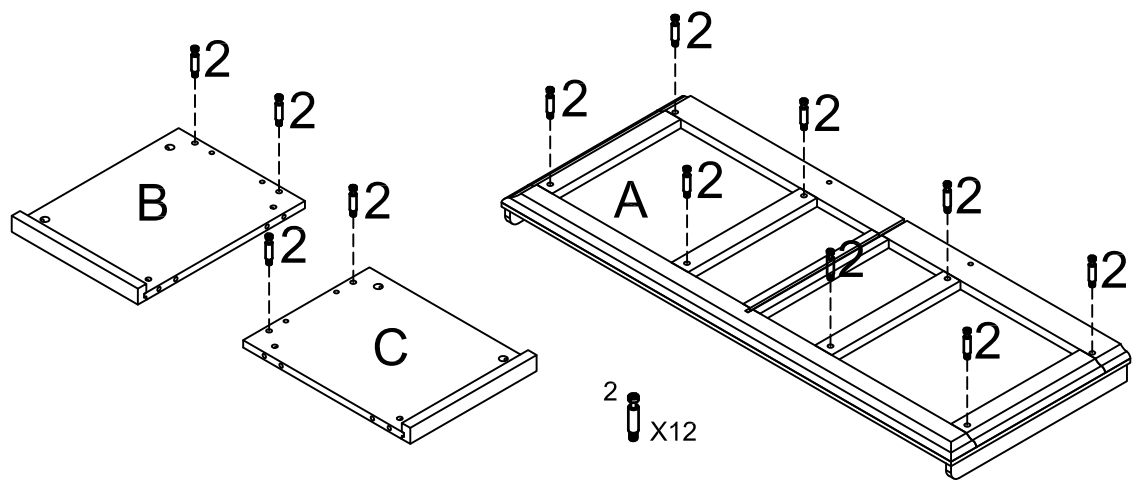
PART LIST

<div>A</div> 	<div>B</div> 	<div>C</div> 	<div>D</div> 	<div>E</div> 
Top Panel 1 PC	Left Side Panel 1 PC	Right Side Panel 1 PC	Left Clapboard 1 PC	Right Clapboard 1 PC
<div>F</div> 	<div>G</div> 	<div>H</div> 	<div>I</div> 	<div>J</div> 
Back Panel 1 PC	Diaphragm Panel 1 PC	Brace Panel 1 PC	Bottom Frame 1 PC	Cushion 1 PC
<div>K</div> 	<div>L</div> 			
Wicker Basket 2 PCS	Basket Bottom 2 PCS			

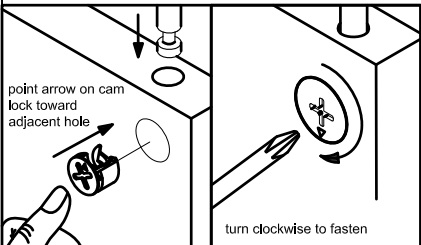
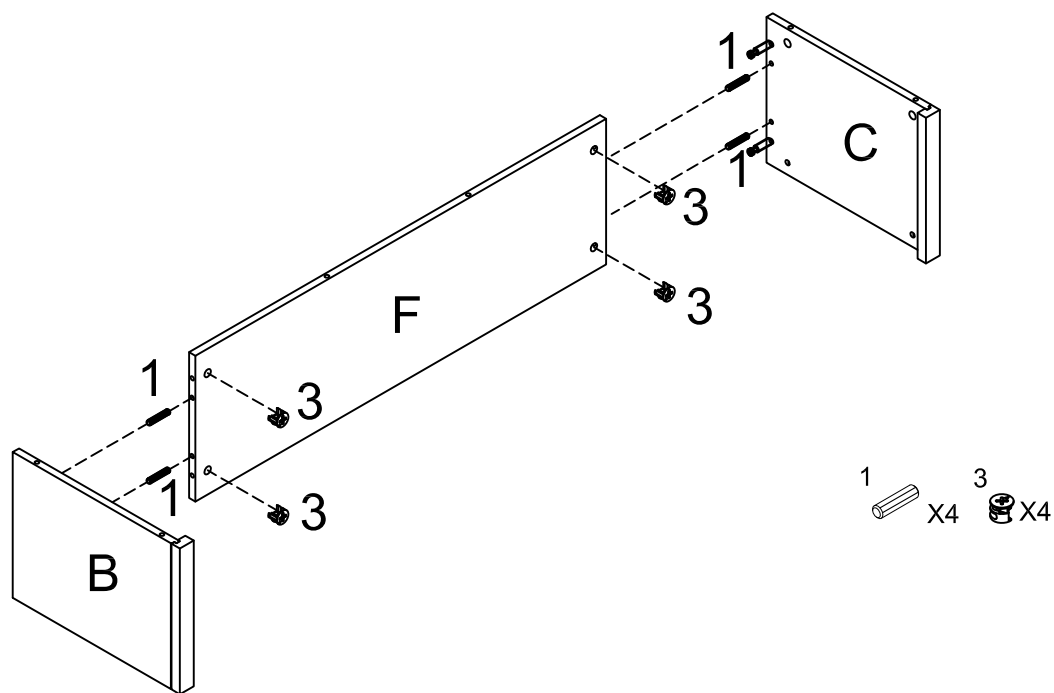
HARDWARE LIST

1		2		3		4		5	
<p>Wood Dowel</p> <p>16 PCS</p>		<p>Cam Bolt</p> <p>12 PCS</p>		<p>Cam Lock</p> <p>12 PCS</p>		<p>Barrel Nut</p> <p>8 PCS</p>		<p>Allen Bolt</p> <p>8 PCS</p>	
6		<p>Tools needed: Allen key (part #6)(included)</p> <p>Phillips Head Screw Driver (Not included)</p>							
<p>Allen Key</p> <p>1 PC</p>									
		7							
		<p>Allen Bolt</p> <p>8 PCS</p>							

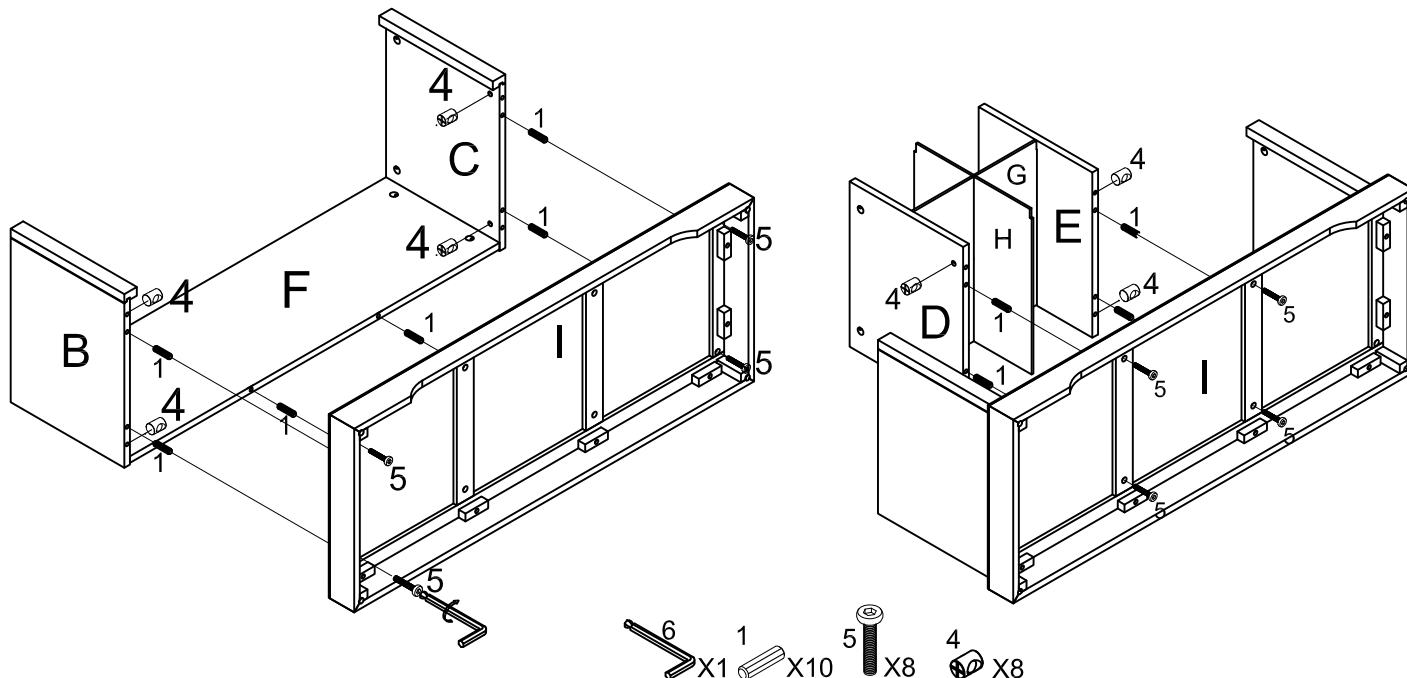
Step 1. Insert Cam Bolts (Part#2) into Top (A), Left Side Panel (B) and Right Side Panel (C).



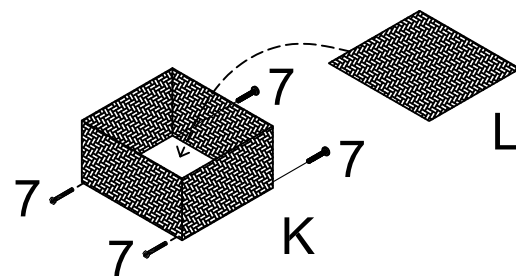
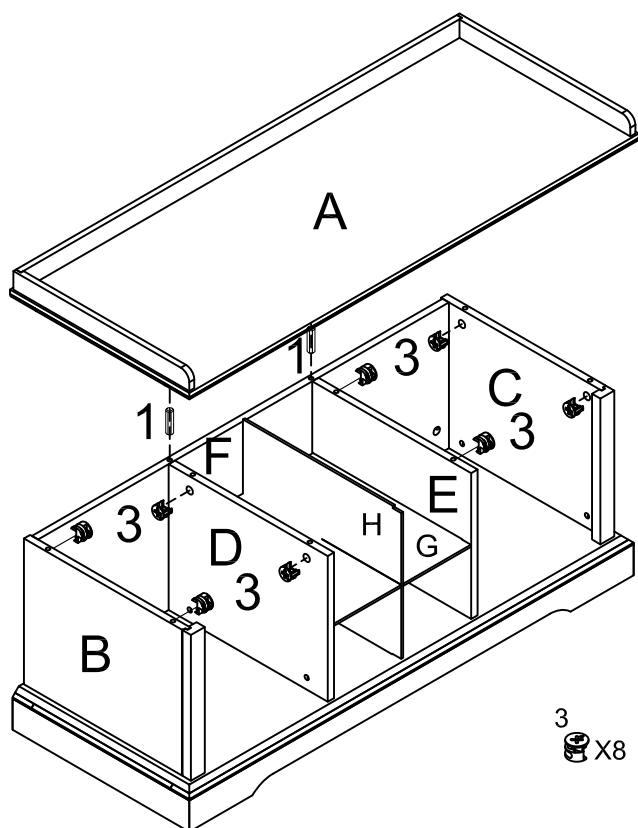
Step 2. Attach Left Side Panel (B) and Right Side Panel (C) to Back Panel (F) using Wood Dowels (Part#1) and Cam Locks (Part#3).



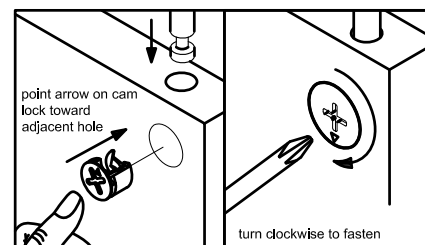
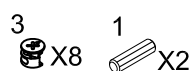
Step 3. Attach Bottom Frame (I) to assembled Left Side Panel (B), Right Side Panel (C) and Back Panel (F) using Wood Dowel (Part#1) and Bolt (Part#5). Insert Diaphragm Panel (G) into Left Partition Panel (D) and Right Partition Panel (E), then insert Brace Panel (H) into cutout of Panel (G). Attached assembled Panels (G, H, D & E) onto Bottom Frame (I) using Barrel Nuts (Part#4), Wood Dowels (Part#1) & Bolts (Part#5).



Step 4. Attach Top Panel (A) assembled (B,C,D,E,F) using Wood Dowel (Part#1) and Cam Lock (Part3).



Step 5. Open the folding Wicker Basket (K), and put basket bottom panel (L) in place using Bolt (Part#7) Locks. Put baskets into cabinet.





Limited Manufacturers Warranty

Crosley Furniture Products are warranted against defects in material and workmanship for a period of 90 days beginning from the date of sale. Should any parts be missing or defective, we will replace or repair the parts for a period of 90 days from the date of purchase.

Should you experience any missing or damaged parts, do not return to the store. Please visit our website **[www . Crosleyfurniture . com](http://www.Crosleyfurniture.com)** , or contact us directly at 800-815-4796 from 9 AM to 5 PM (EST) Monday to Friday.

This warranty gives the purchaser specified legal rights in addition to any rights which may vary from state to state.

In accordance with the "Moss-Magnuson Warranty Act" of July 10, 1975, this is termed a "limited warranty" which in no way compromises Crosley Furniture's high standards of Quality and Workmanship.