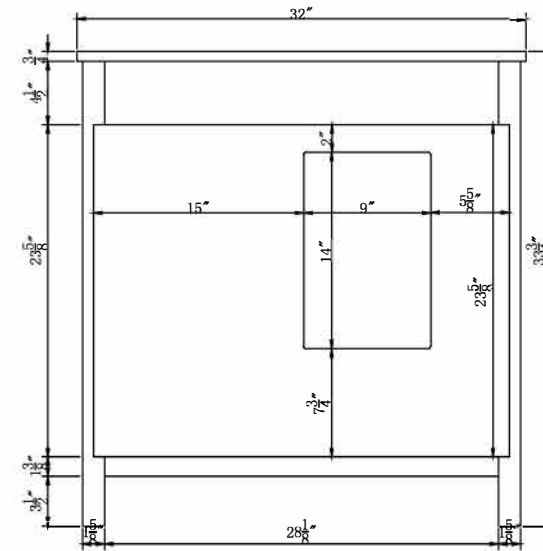
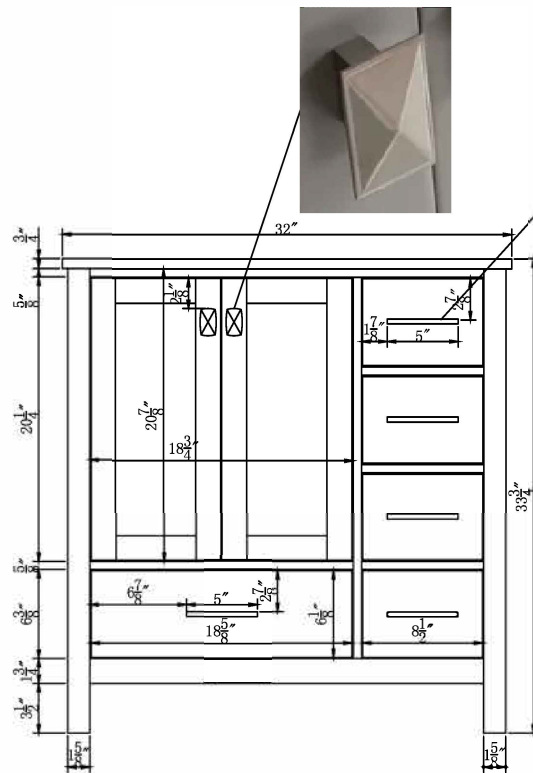


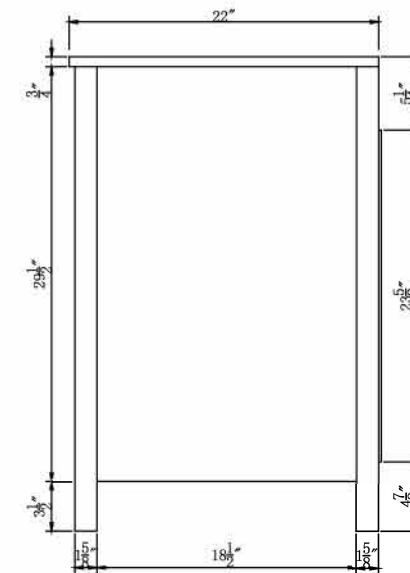
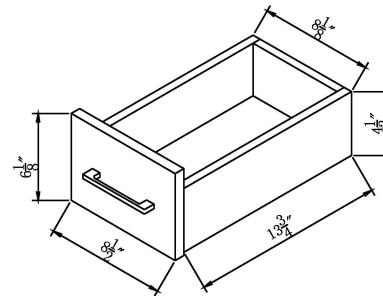
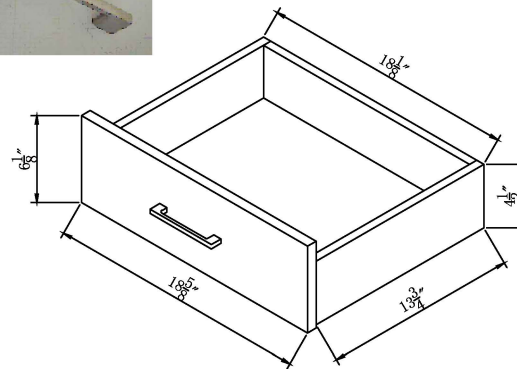
Top view



Back view



Front view



Side view

| | | | | | | | | | |
|--|---------------------------|----------------------------|----------------------------|------------------------------|----------------------------|------------------------------|-------------------------|-----------------------------------|--------------------|
| | | Finish | White | Mirror type | N/A | Beveled glass | N/A | Frame material | Solid wood and MDF |
| Solid wood construction | Solid wood legs | Drawers Included | YES | Number of Drawers | 5 | Joinery Type | SQUARE ENDED BUTT JOINT | Drawer railing | Metal |
| Drawer Width (in) | DW1:18-5/8" DW2:8-1/2" | Drawer Depth (in) | DW1:14-3/8" DW2:14-3/8" | Drawer Height (in) | DW1:6-1/8" DW2:6-1/8" | Shelves | NO | Number of Shelves | 0 |
| Doors included | YES | Number of Doors | 2 | Finished Back | Yes | Hardware finish | Brushed nickel | Assembly | No |
| Countertop included | Yes | Countertop material | Engineering stone | Number of Sinks accommodated | 1 | Sink material | Porcelain | Sink Width | 15-3/4" |
| Sink Depth | 12-5/8" | Sink height | 8-1/4" | Sink hole size | 1-3/4" | Mounting type | Free Standing | Backsplash | No |
| Backsplash Width | N/A | Backsplash Depth | N/A | Backsplash Height | N/A | Drain assembly included | NO | Faucet included | NO |
| Faucet type | NO | Faucet hole size | 1-3/8" | Faucet hole spacing | 8"3 Holes | Product Width | 32" | Product Depth | 22" |
| Product Height | 34" | Package LENGTH (inches) | 38-5/8" | Package WIDTH (inches) | 26-3/8" | Package Height (inches) | 38-3/8" | Package Weight (lbs) | 150.68 |
| Product Weight | 136.68 | Shipment Type | LTL | Table/Desk: top width | 22" | Table/Desk top finish | calacatta quartz | glass top tempered | N/A |
| table top maximum weight | 50.4 lbs | Table: seating capacity | 1 | upholstery color | N/A | upholstery pattern | N/A | cushion material | N/A |
| base finish | White | powder coated finish | NO | base material | MDF | top material | Engineering stone | wood species | Rubberwood |
| tip over restraint strap | NO | shape of top | Rectangle | lift top | NO | shelf material | N/A | adjustable shelves | NO |
| Handle designs | Rectangle | safety stop | NO | felt lined drawers | NO | drawer glide extension | Full extension | drawer glide material | metal |
| drawer dividers | N/A | Drawer Interior finish | Wood grain | Ball Bearing Glides | NO | soft close drawer glides | YES | Number of cabinets | 1 |
| shelf width (in) | N/A | shelf depth (in) | N/A | shelf height (in) | N/A | Shelf thickness | N/A | Any certification? (CARB/TSCA VI) | YES |
| California Proposition 65 warning required | YES | Drawer Interior Width (in) | DW1:18-1/8" DW2:8-1/8" | Drawer Interior Depth (in) | DW1:13-3/4" DW2:13-3/4" | Drawers Interior Height (in) | DW1:4-1/2" DW:4-1/2" | cabinet interior width | 18-3/4" |
| cabinet interior depth | 20-3/8" | cabinet interior height | 20-1/4" | leg width | 1-5/8" | leg depth | 1-5/8" | leg height | 33-1/8" |
| gloss finish | NO | stackable | NO | leg design | Straight legs | Armoires: ring slots | NO | Armoires: hooks | NO |
| armoires: mirror dimensions | NO | door thickness | 3/4" | false drawers? | NO | Vanity countertop edge style | FLAT | # of faucet holes | 3 |