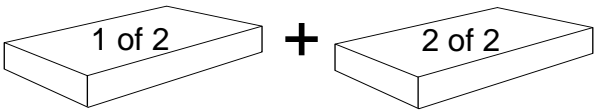


5-Drawer Chest

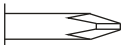
Assembly Instructions

This product is shipped in
2 cartons

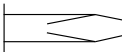


Required Tools

Screwdrivers



Phillips Head



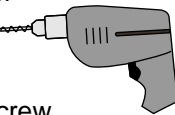
Flat Head



Hammer

Optional Tools

Using a power screwdriver will speed up assembly.

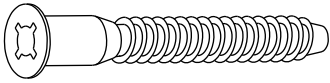


Caution

Do not over tighten any screw.
The last few turns of each screw should be done very slowly or by hand.

Hardware Identification

Cabinet Hardware



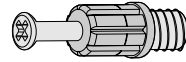
2" Confirmat Screws
(12)
RM-0001



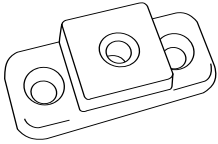
Screw Cover Caps
(12)
RM-0226 black
RM-0620 cherry
RM-0304 espresso
RM-0523 maple
RM-0008 white



15mm Zinc Cam
(4)
RM-0103



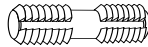
Green Twister Dowel
(4)
RM-0501



T Spacer
(20)
RM-0628



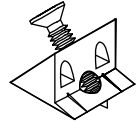
Drawer Slide Screw
(60)
RM-0074



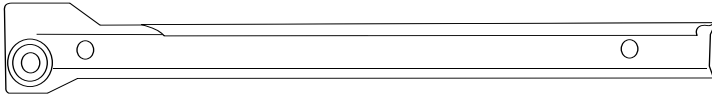
Plastic Dowels
(11)
RM-0072



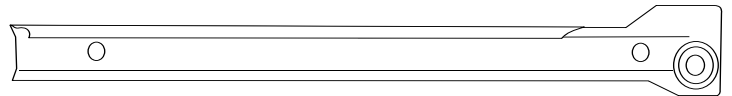
3/4" Nail
(30)*
RM-0022
**More than required*



Drawer Bottom Stabilizer
(5)
RM-0839

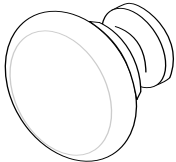


LEFT Cabinet Slide (5)



RIGHT Cabinet Slide (5)

Drawer Hardware



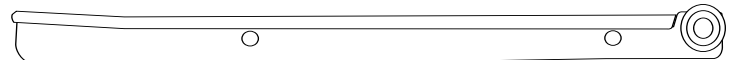
Knob (10)
RM-0464 maple / black
RM-0625 white / cherry
RM-0464E espresso



#8 7/8" Machine Screw
(10)
RM-0465



1 LEFT Drawer Slide per Drawer (Total = 5)



1 RIGHT Drawer Slide per Drawer (Total = 5)

Set of Grey Drawer & Cabinet Slides (5 Sets)
RM-0469-G

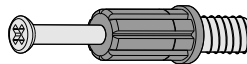
4 per drawer



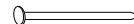
#8 - 1 1/2" Hi Lo Screws
(20)
RM-0504



12mm Zinc Cam
(20)
RM-0715



Black Twister Dowel
(20)
RM-0500

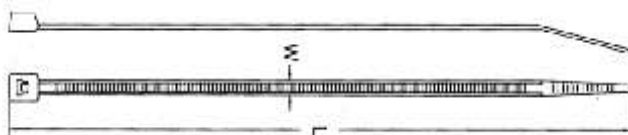


3/4" Nail
(20)
RM-0022



Drawer Slide Screw
(20)
RM-0074

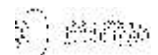
Cable Tie Hardware Package



Cable Tie (1)
Attache pour câble
RM-0459

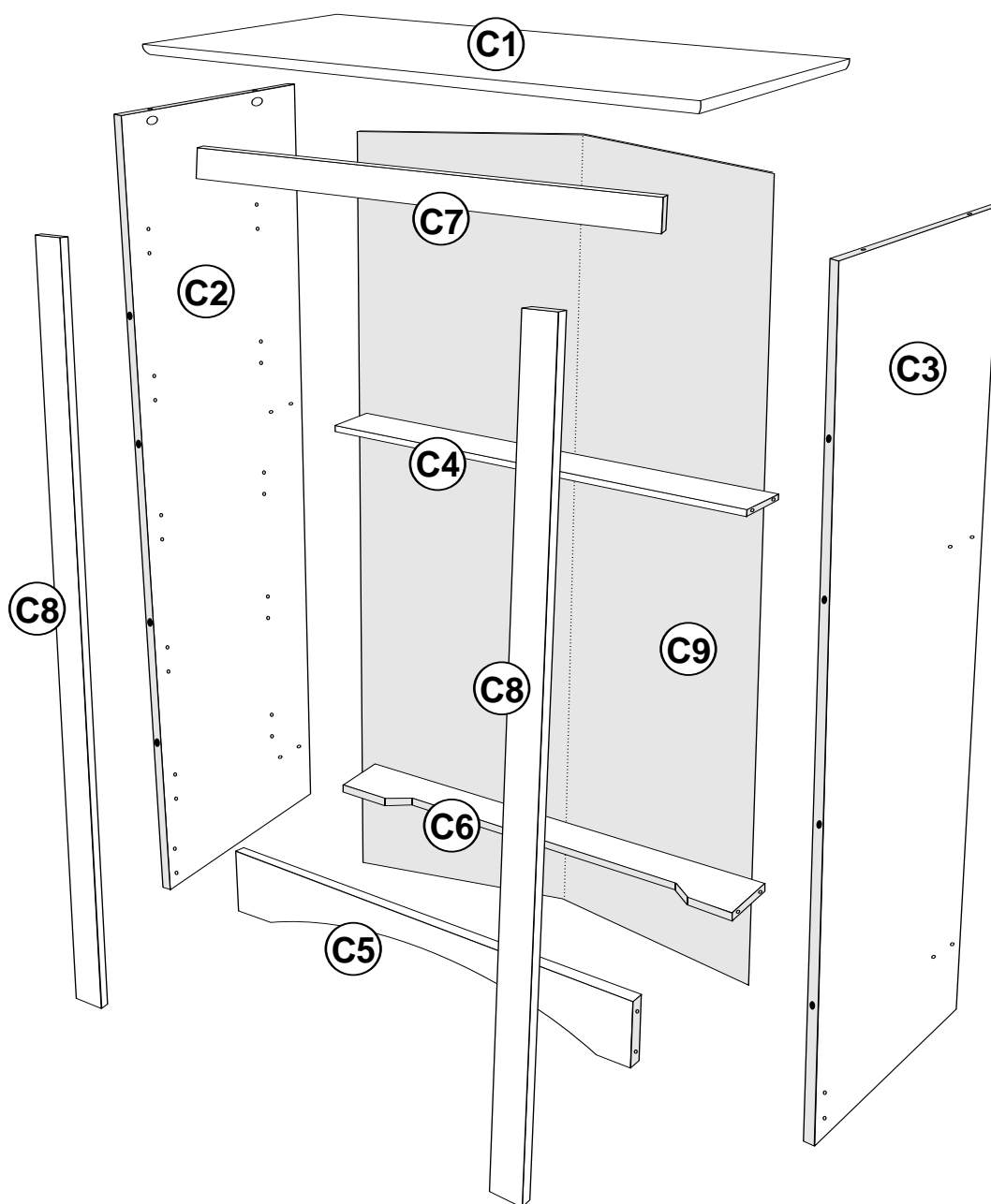


Mounting Base (2)
Base de support
RM-0458



#6-3/4" Pan Head Screw (1)
Vis #6-3/4 po.
RM-0460

Cabinet Parts



C1

Profiled Top (1)
black
cherry
espresso
maple
white

C2

Left Side (1)
black
cherry
espresso
maple
white

C3

Right Side (1)
black
cherry
espresso
maple
white

C4

Plain Stabilizer (1)
black
cherry
espresso
maple
white

C5

Decorative Stabilizer A (1)
black
cherry
espresso
maple
white

C6

Decorative Stabilizer B (1)
black
cherry
espresso
maple
white

C7

1 3/4" Top Molding (1)
black
cherry
espresso
maple
White

C8

1 3/4" Side Molding (2)
black
cherry
espresso
maple
white

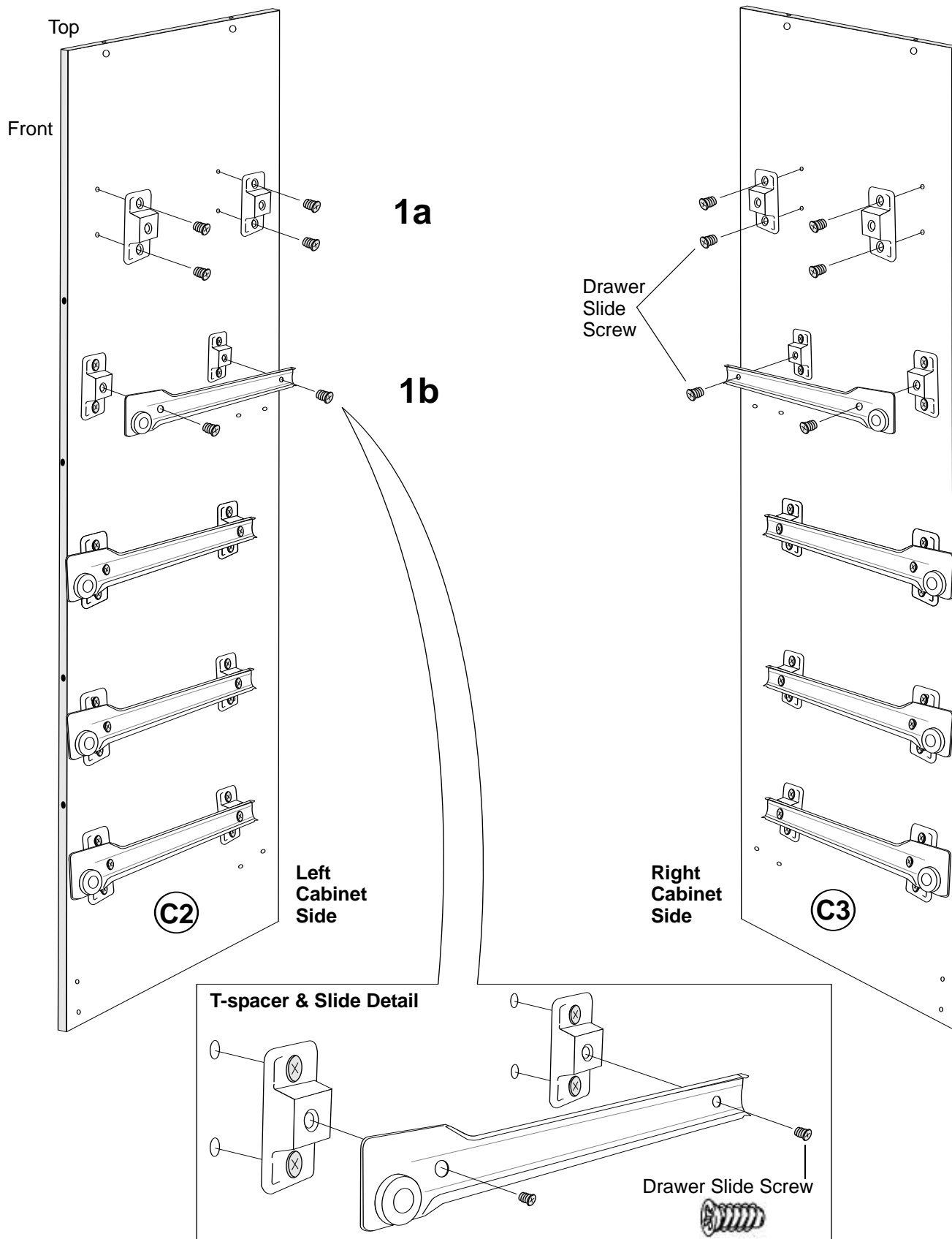
C9

Foldable
Backer (1)

STEP 1 Estimated Time: 15 - 25 minutes

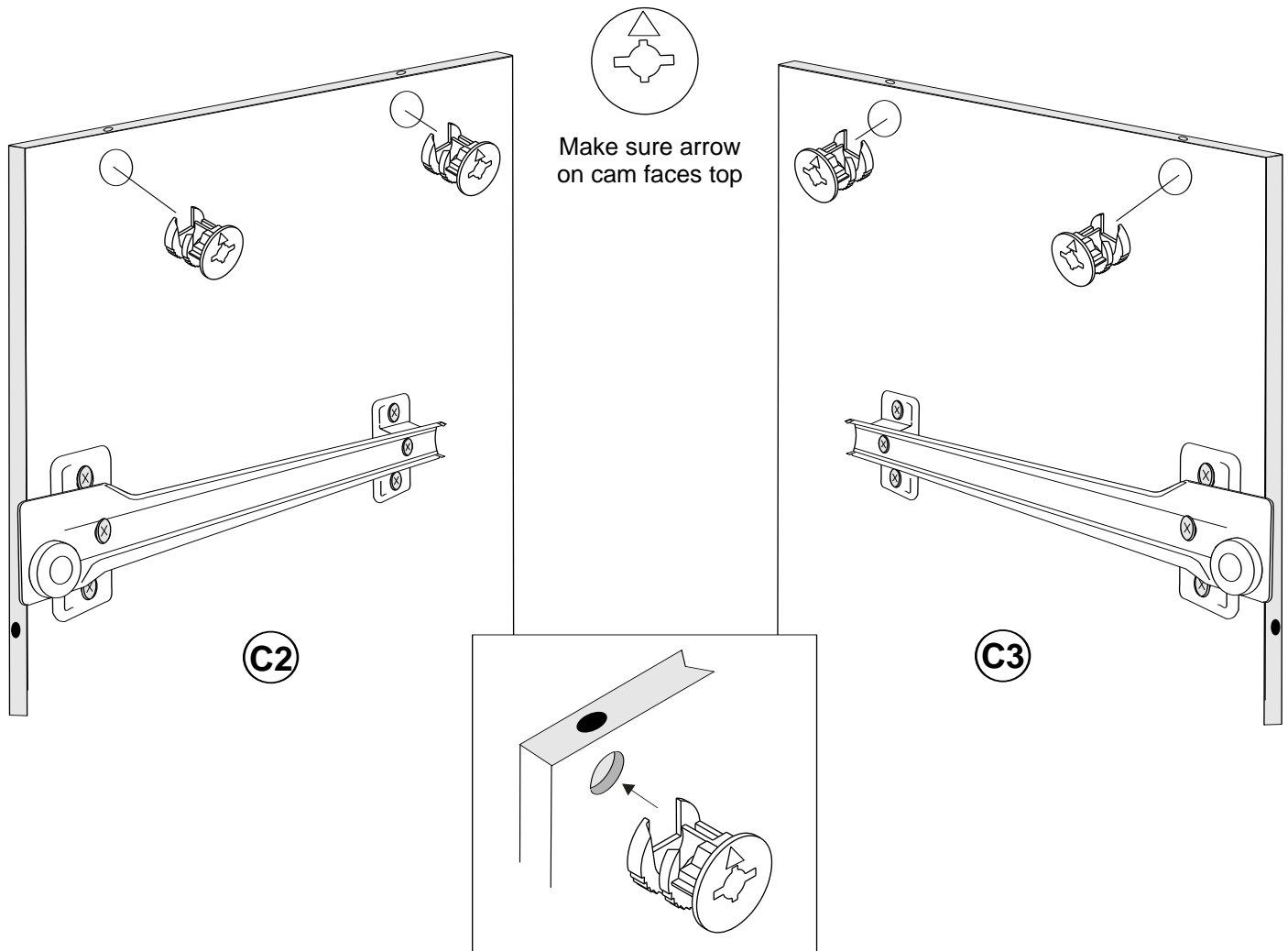
1a Attach T-spacers to left and right cabinet sides using drawer slide screws

1b Then, attach metal cabinet slides to T-spacers using drawer slide screws



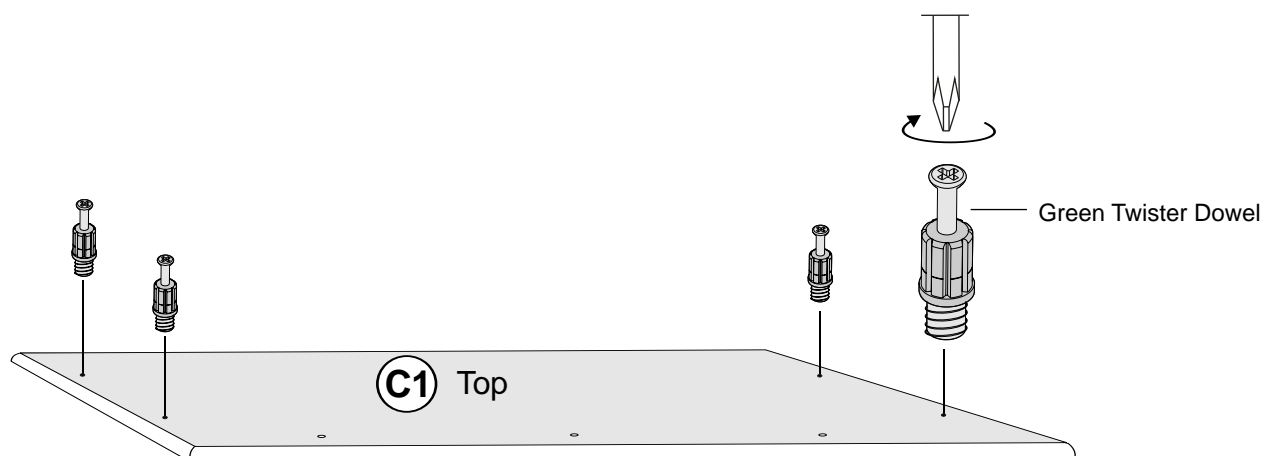
STEP 2 Estimated Time: 1 minute

Insert cams into holes on the top of each side.



STEP 3 Estimated Time: 2 minutes

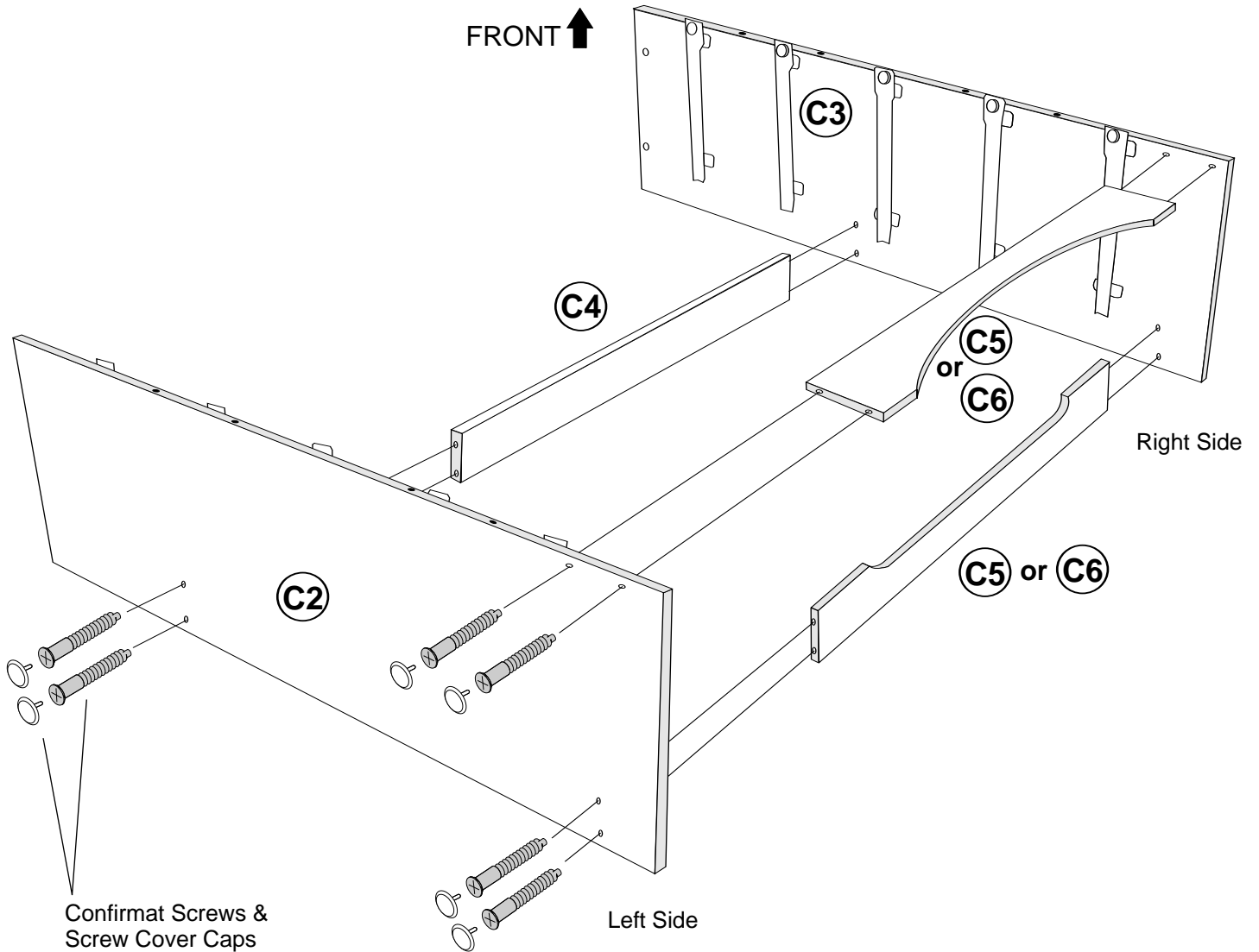
Screw **green** twister dowels into the underside of the top



STEP 4 Estimated Time: 10 minutes

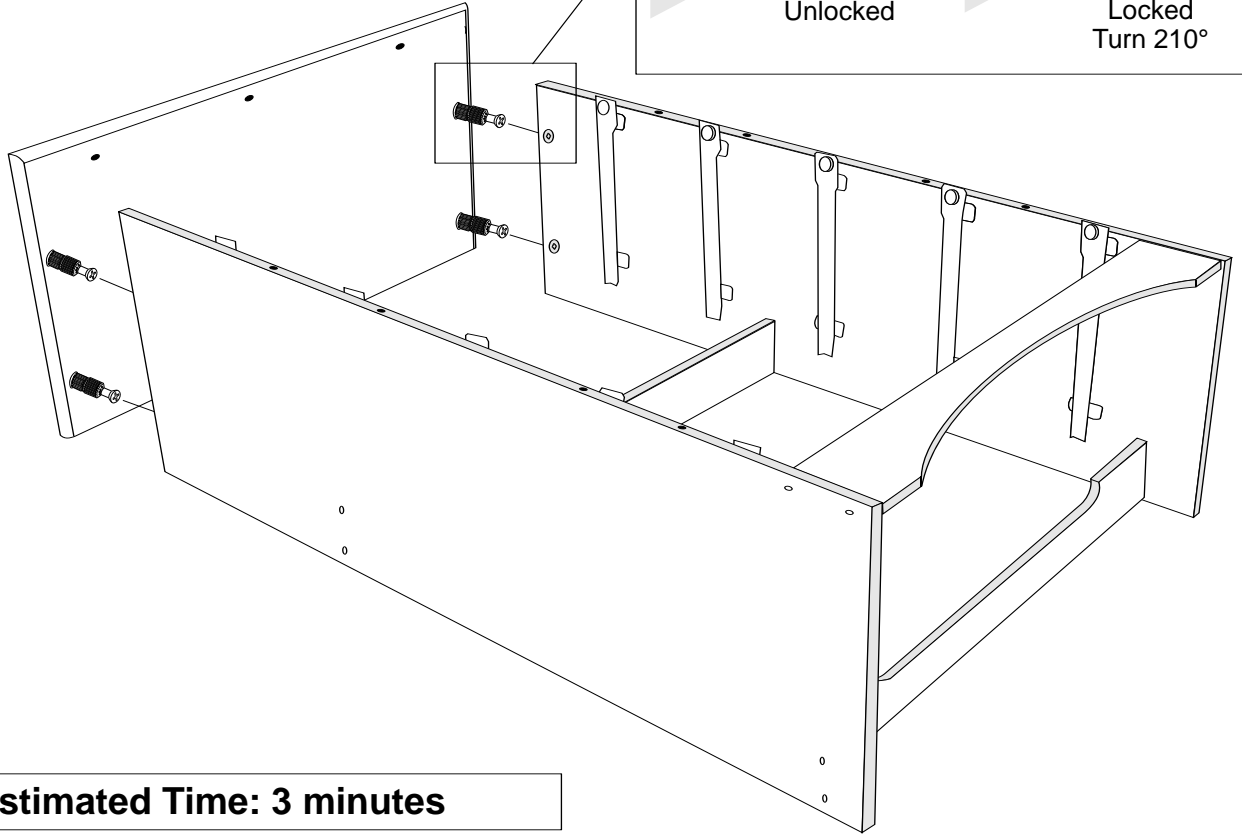
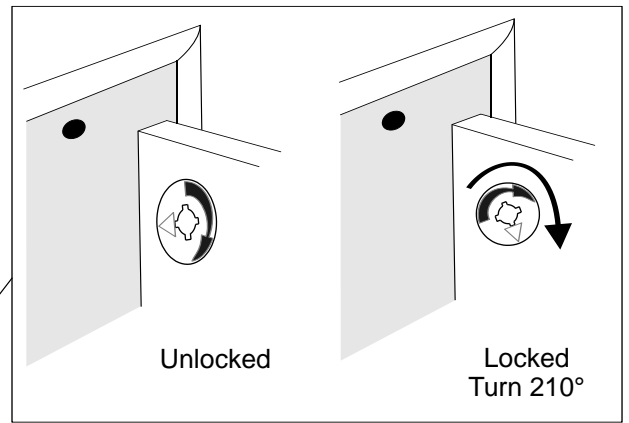
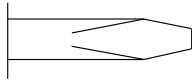
Attach all 3 stabilizers to left and right sides using Confirmat screws. Insert screw cover caps to finish.

Decorative stabilizers **C5** & **C6** are interchangeable. Please choose the style that you prefer and attach it to the front.



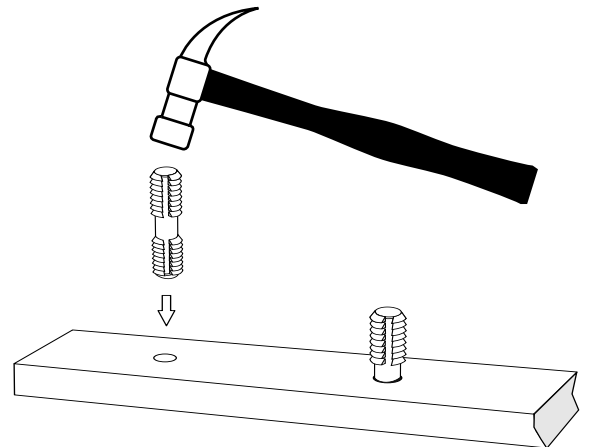
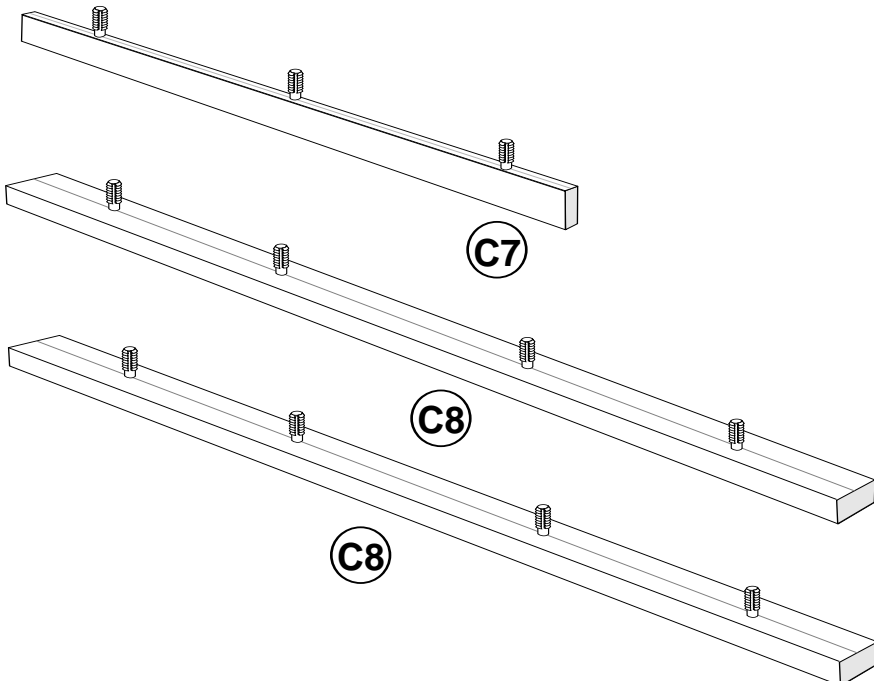
STEP 5 Estimated Time: 2 minutes

Attach top to sides and lock cams using a flat head screwdriver



STEP 6 Estimated Time: 3 minutes

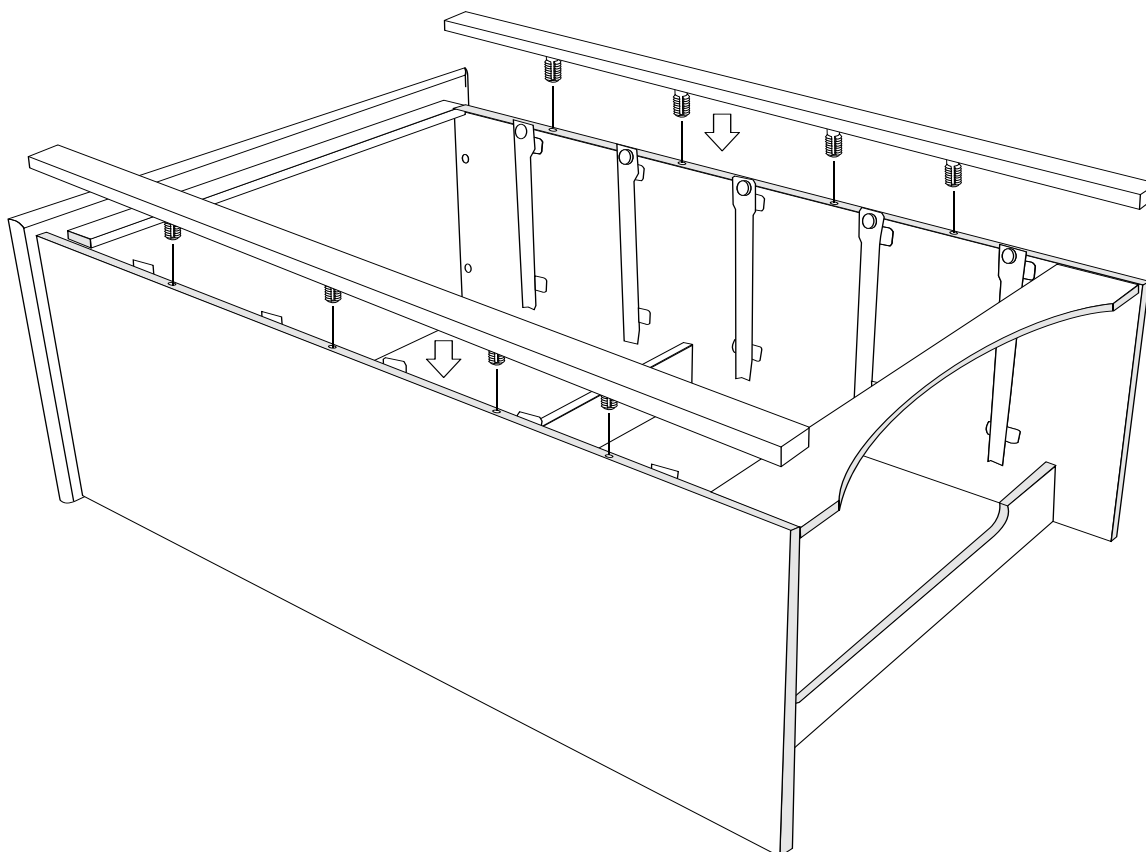
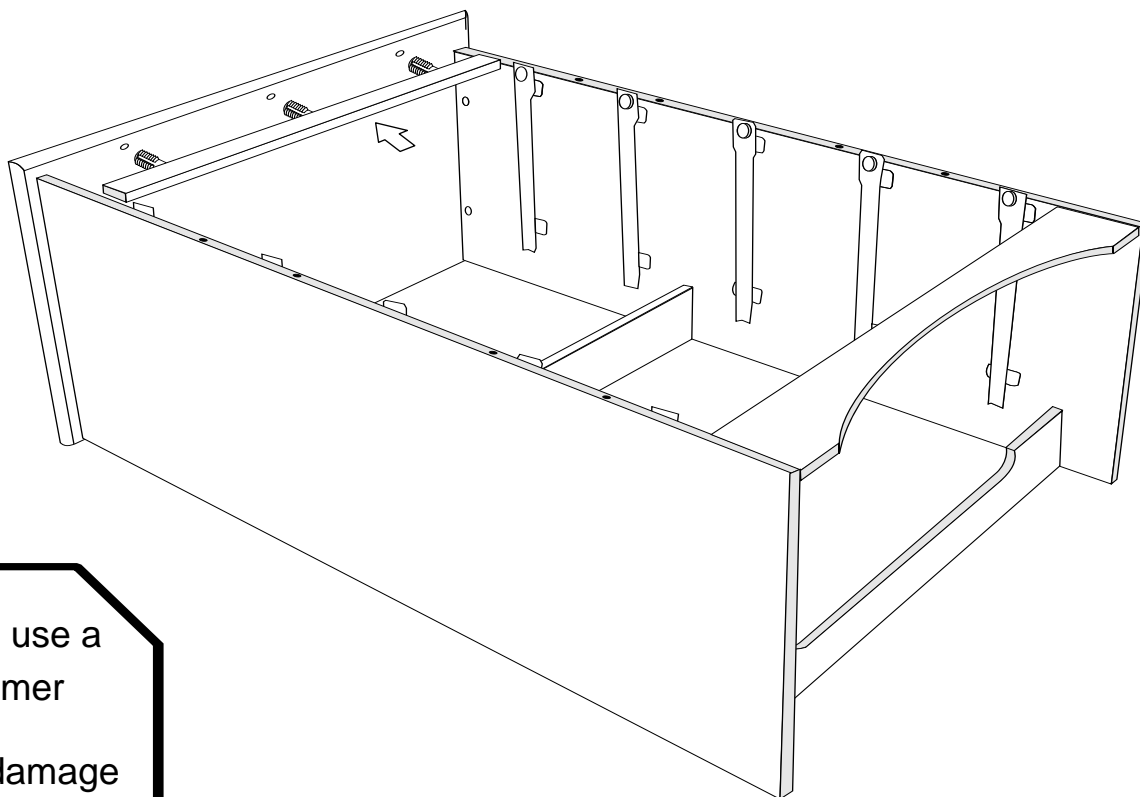
Hammer plastic dowels halfway into side and top moldings



STEP 7 Estimated Time: 3 minutes

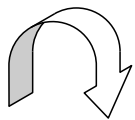
Attach top & side moldings.

Using your hands, apply even pressure to moldings and press firmly



STEP 8 Estimated Time: 4 minutes

Carefully turn chest over and attach backer



Nail backer as indicated. You may have more nails than are necessary



NOTE:

Do not stand product up without the backer fastened

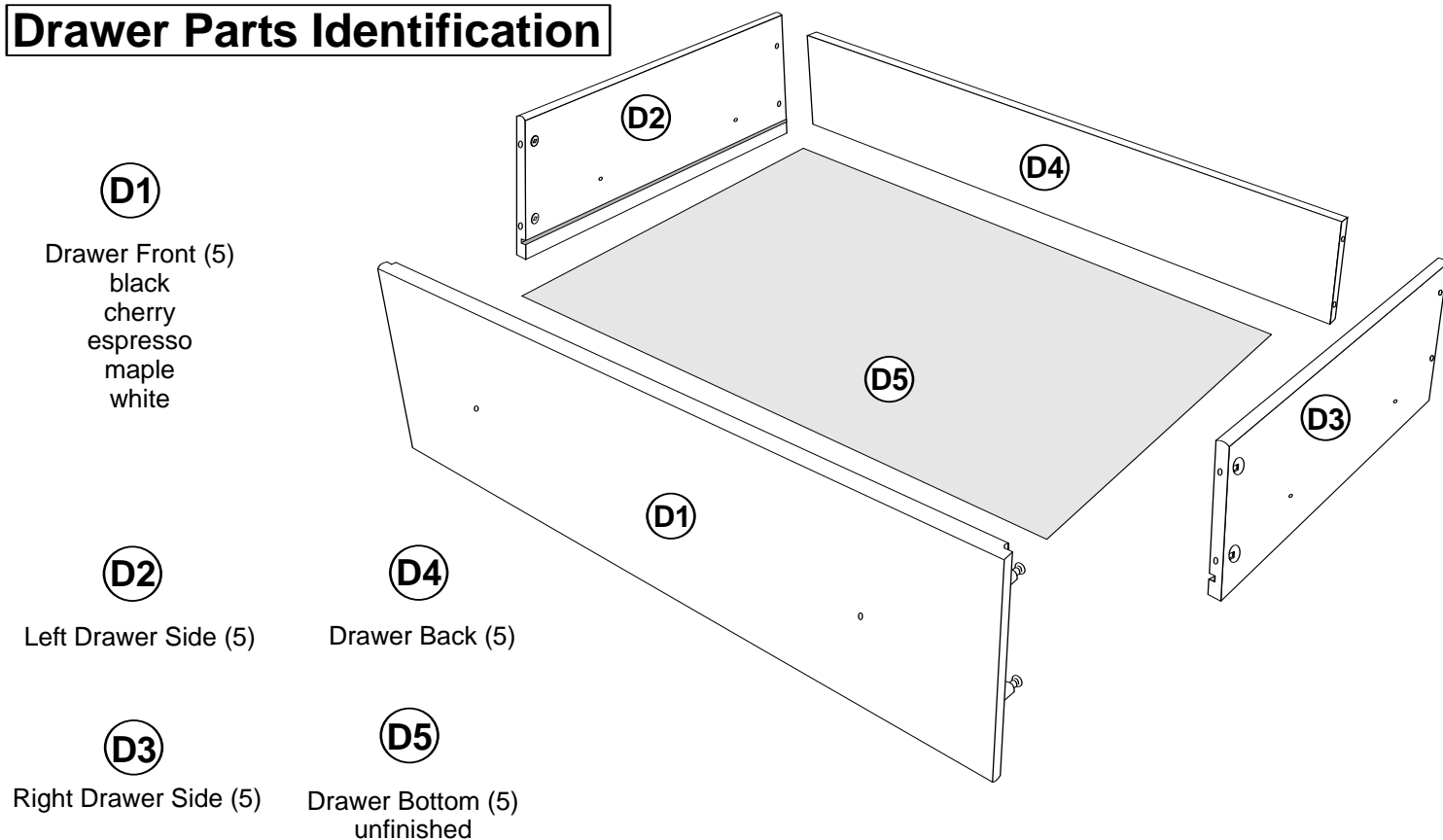
Space evenly from edge

Position nails in the center of the board

c

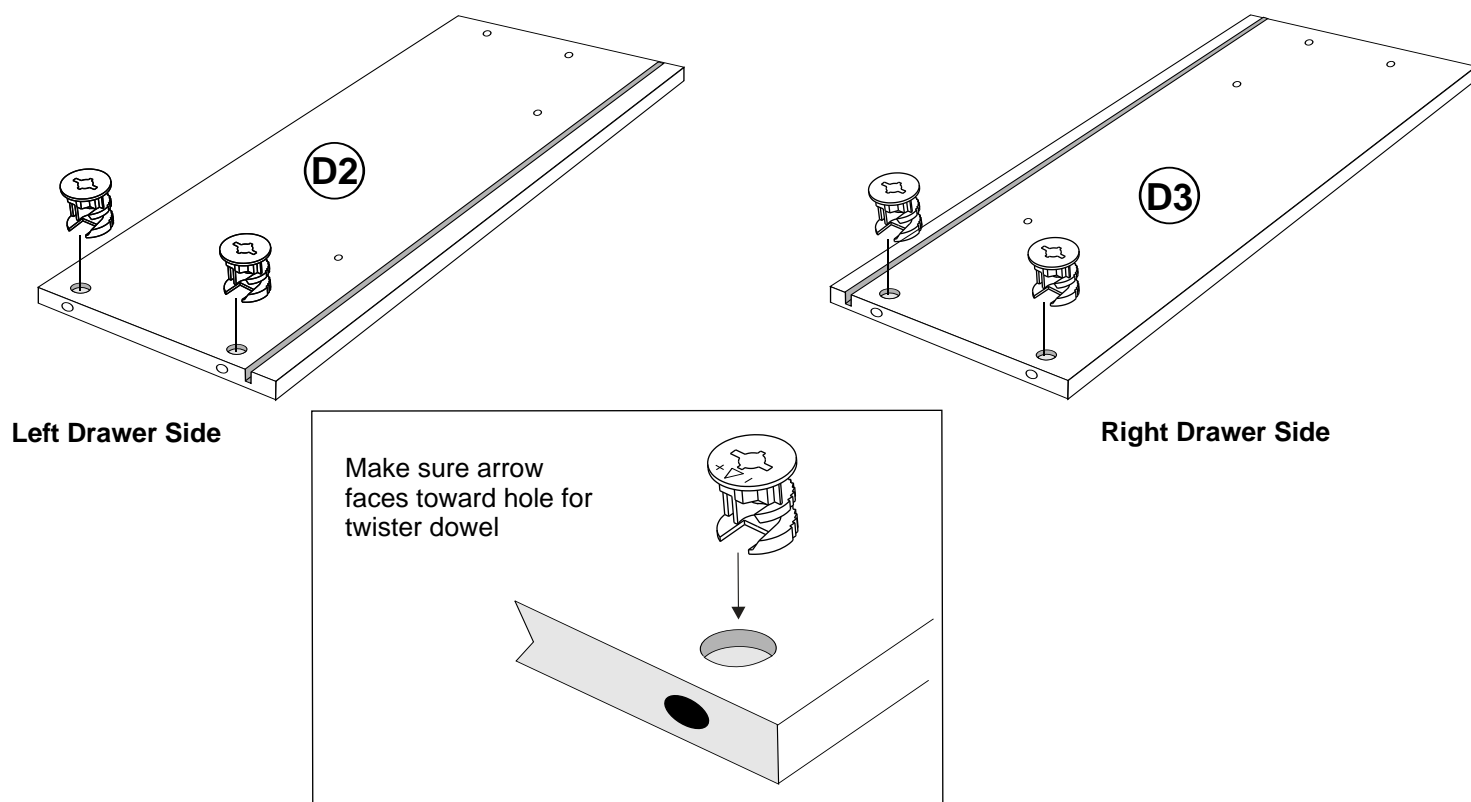
c

Drawer Parts Identification

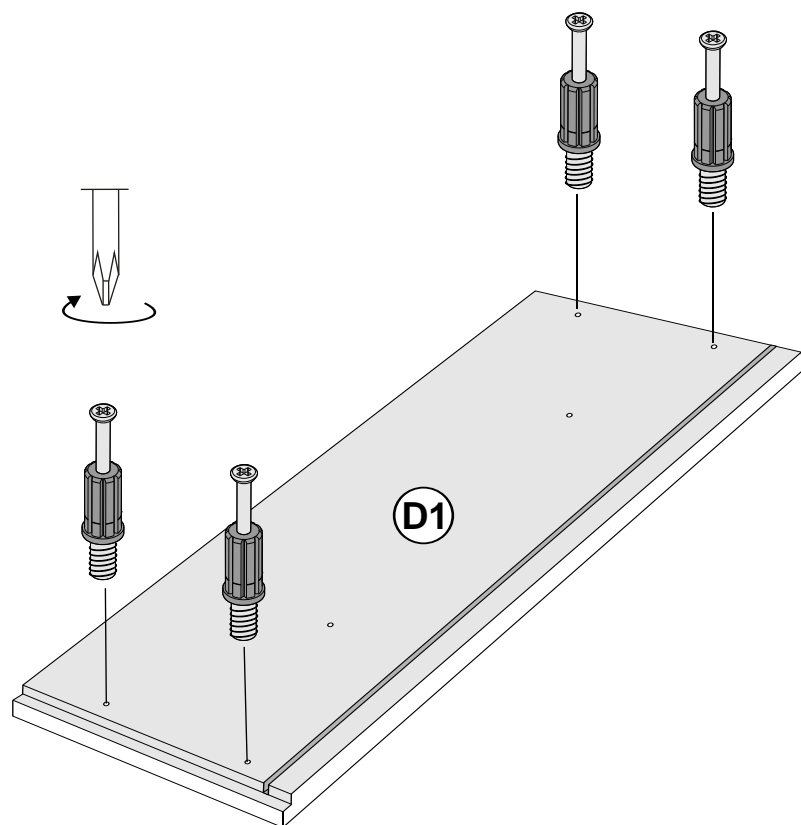


STEP 9 Estimated Time: 5 minutes PER DRAWER

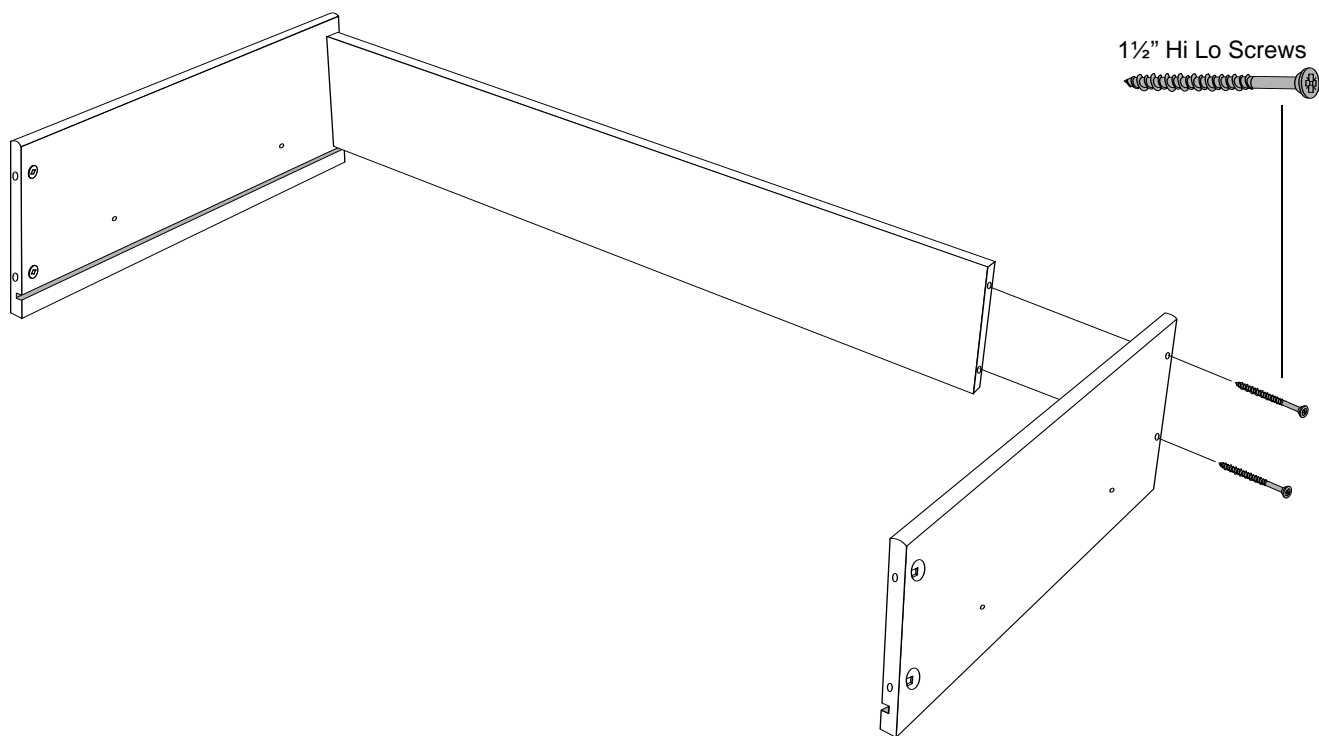
9a Insert cams into drawer sides



9b Screw **black** twister dowels into drawer fronts

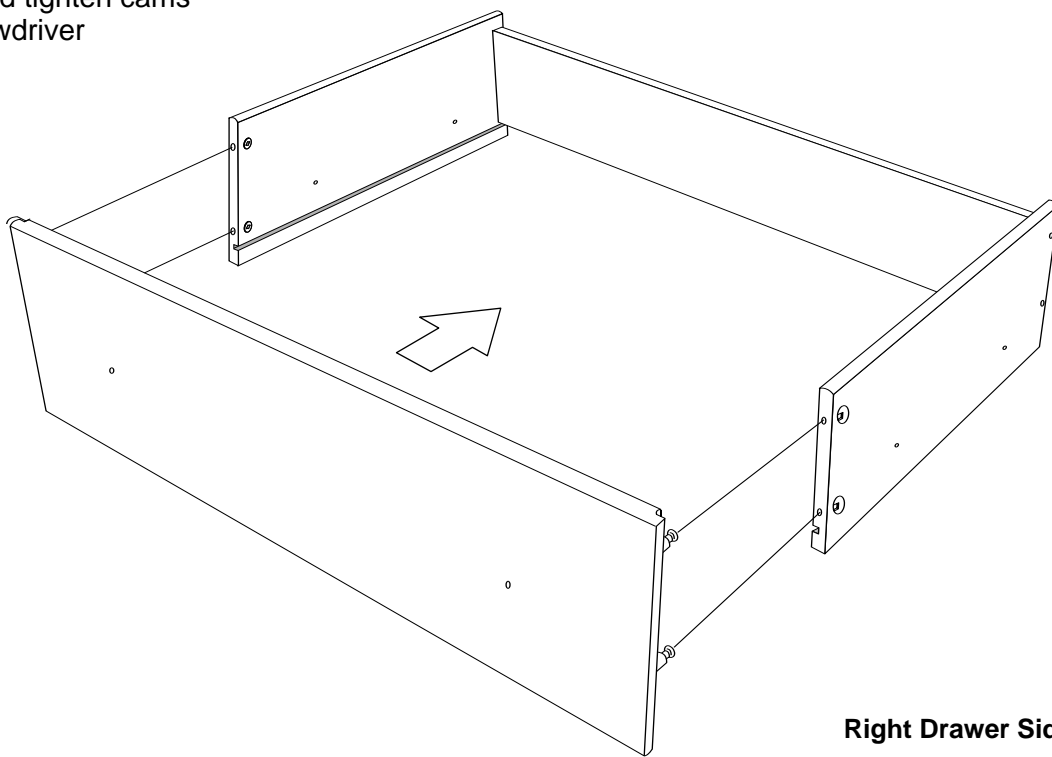
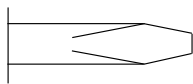
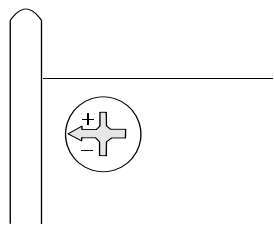


9c Attach drawer sides to drawer back with 1½" Hi Lo screws

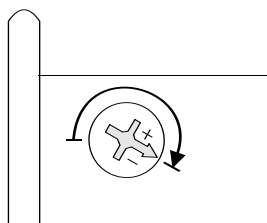
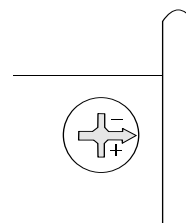


9d

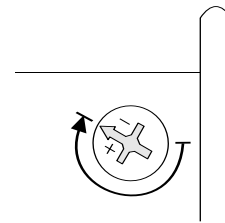
Attach drawer front and tighten cams using a flat head screwdriver

**Left Drawer Side****Right Drawer Side**

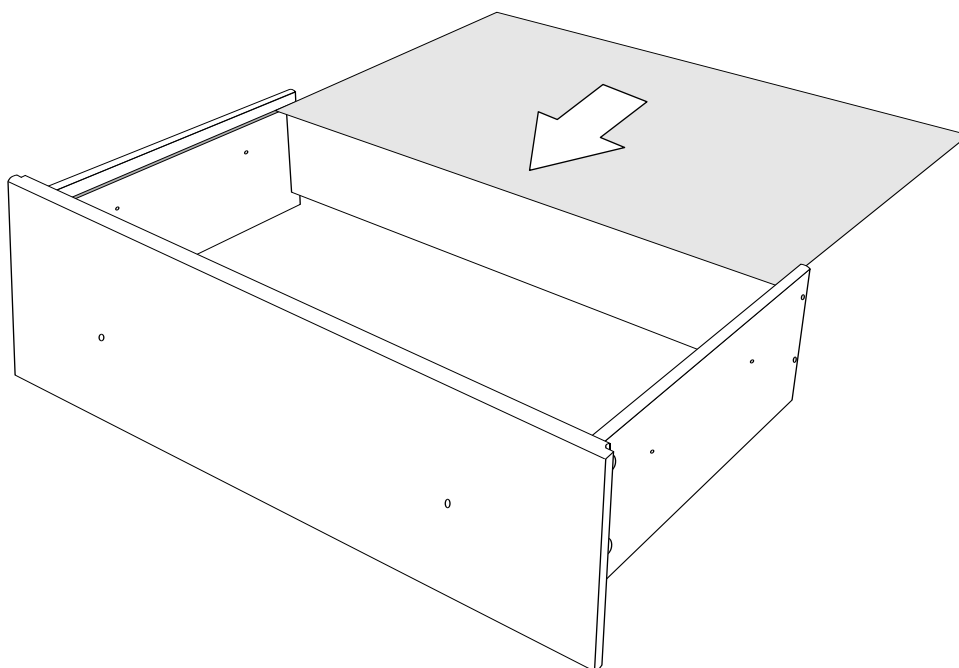
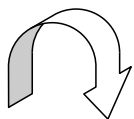
Unlocked

Locked
Turn 210°

Unlocked

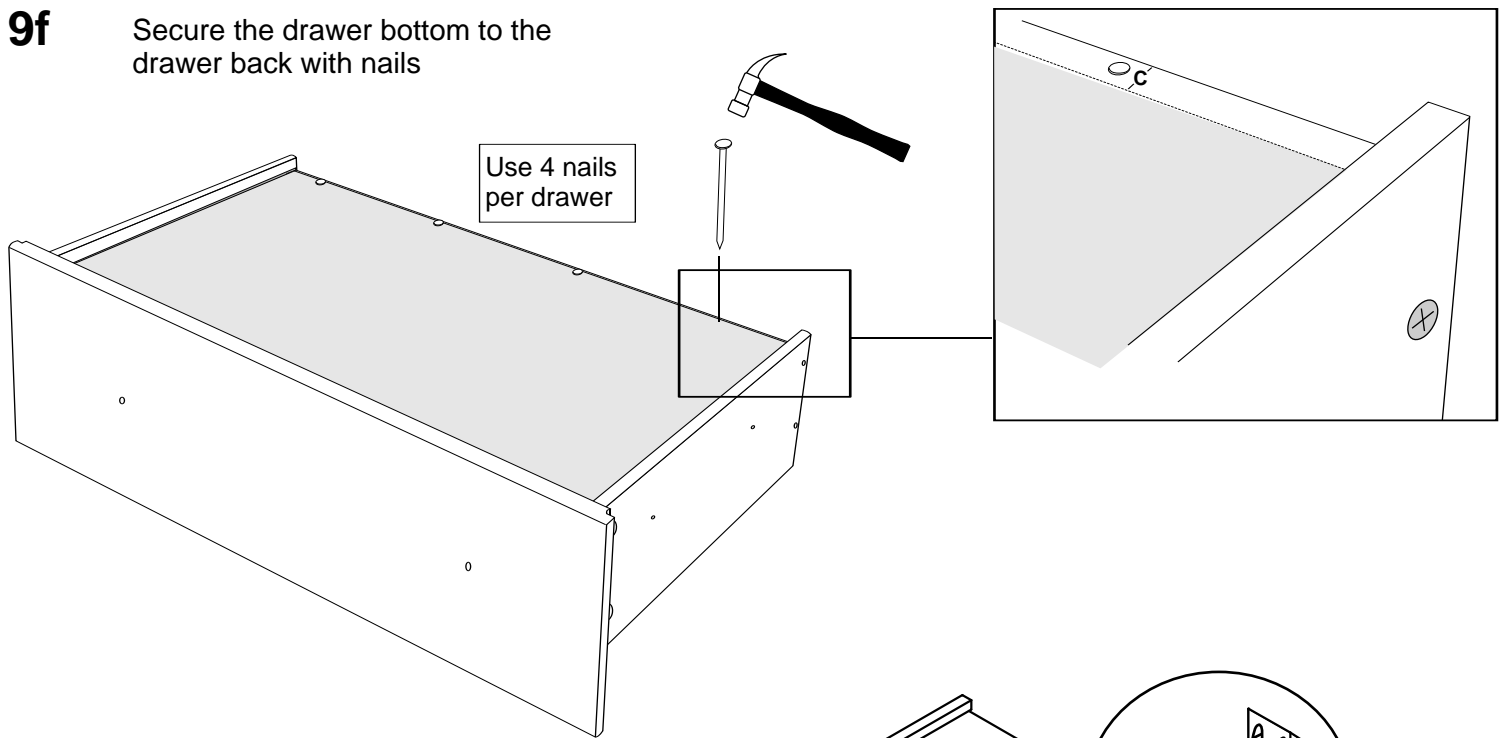
Locked
Turn 210°**9e**

Turn drawer upside down and slide drawer bottom into grooves



9f

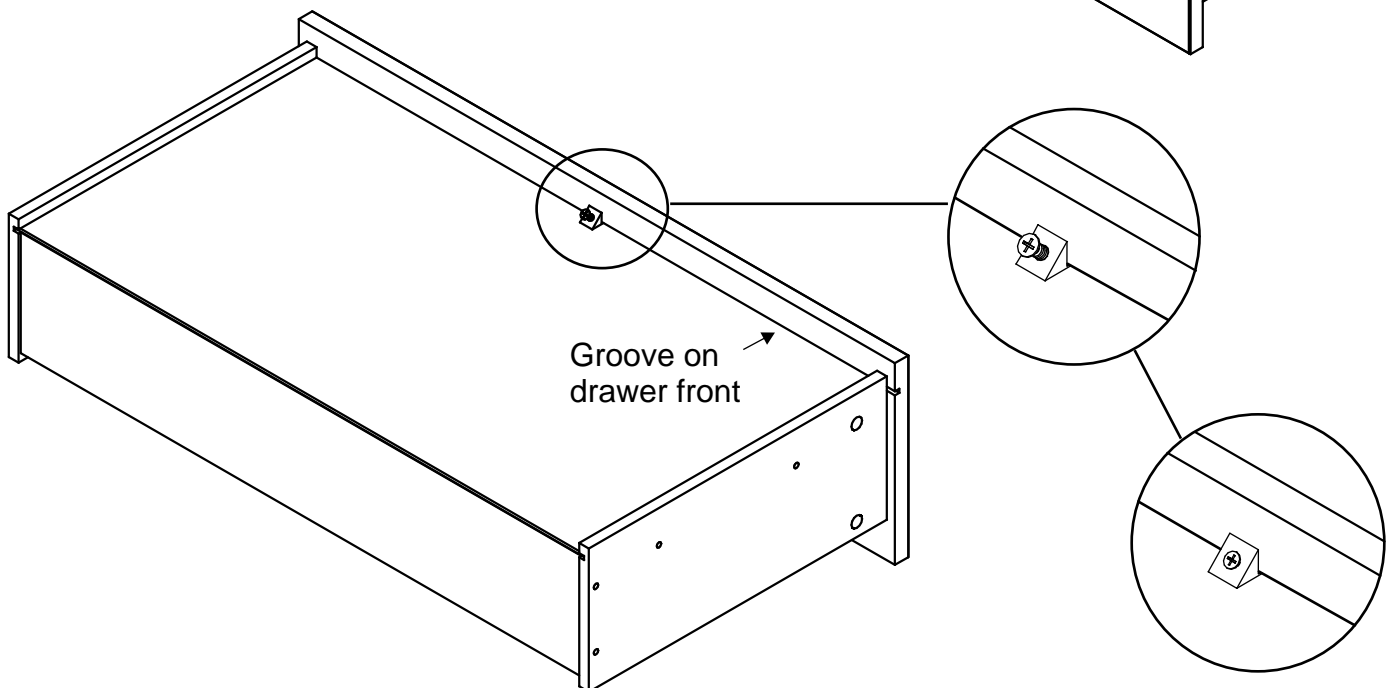
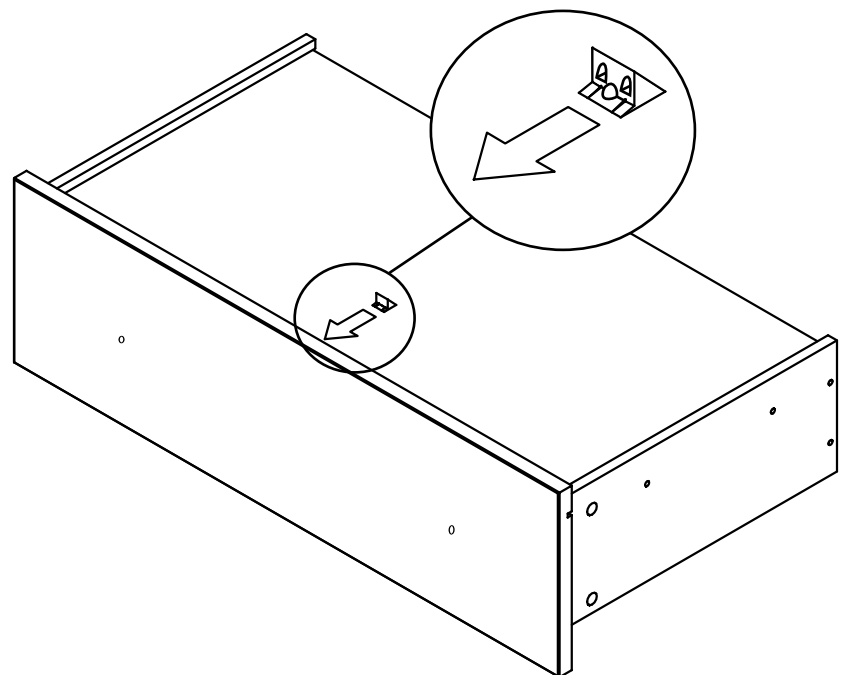
Secure the drawer bottom to the drawer back with nails

**9g**

Insert the Drawer Bottom Stabilizer

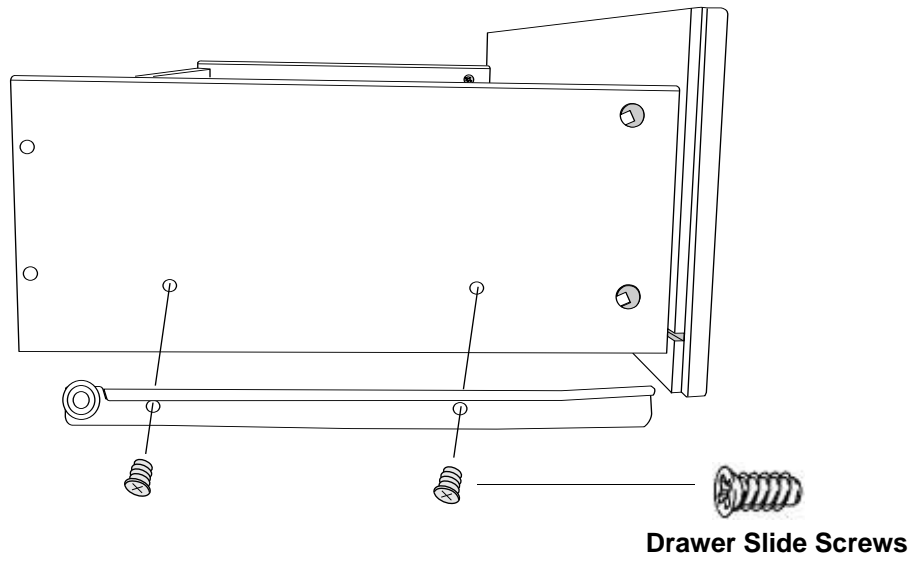
Position the Stabilizer in the center of the drawer and insert it into the groove on the drawer front. This is the same groove that you inserted the drawer bottom into.

Then, tighten screw until it is flush

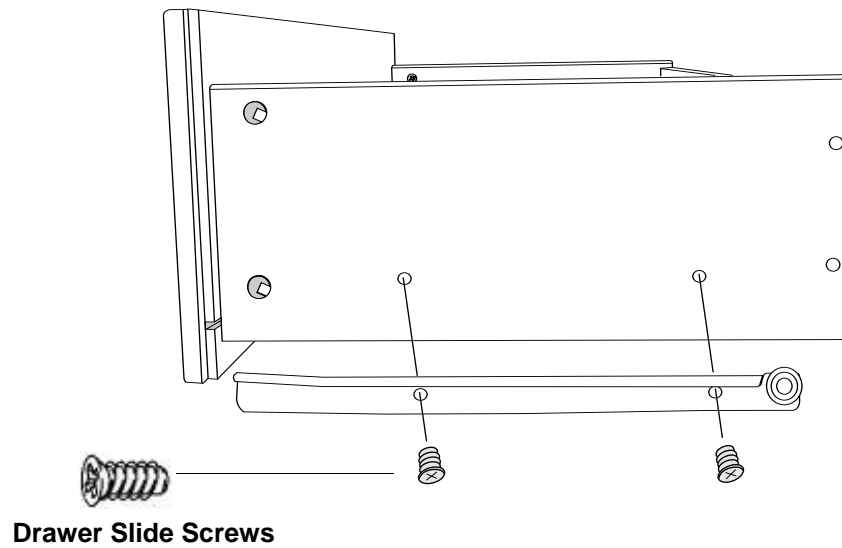


9h Attach drawer slides to left and right drawer sides using drawer slide screws

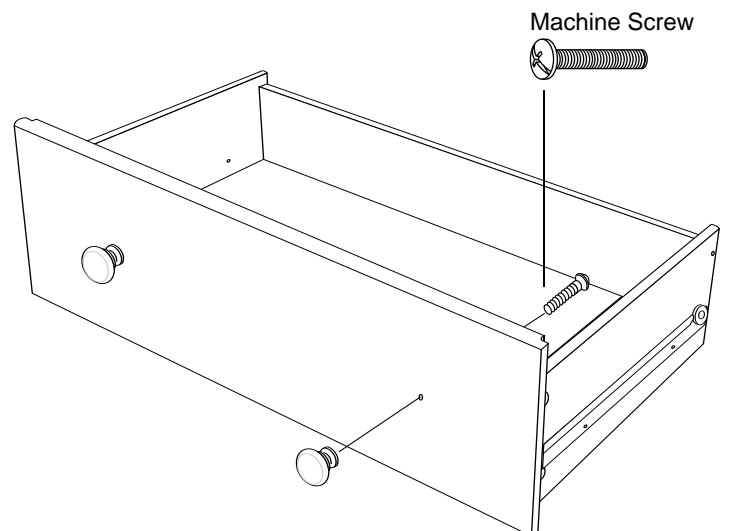
Left Drawer Side



Right Drawer Side



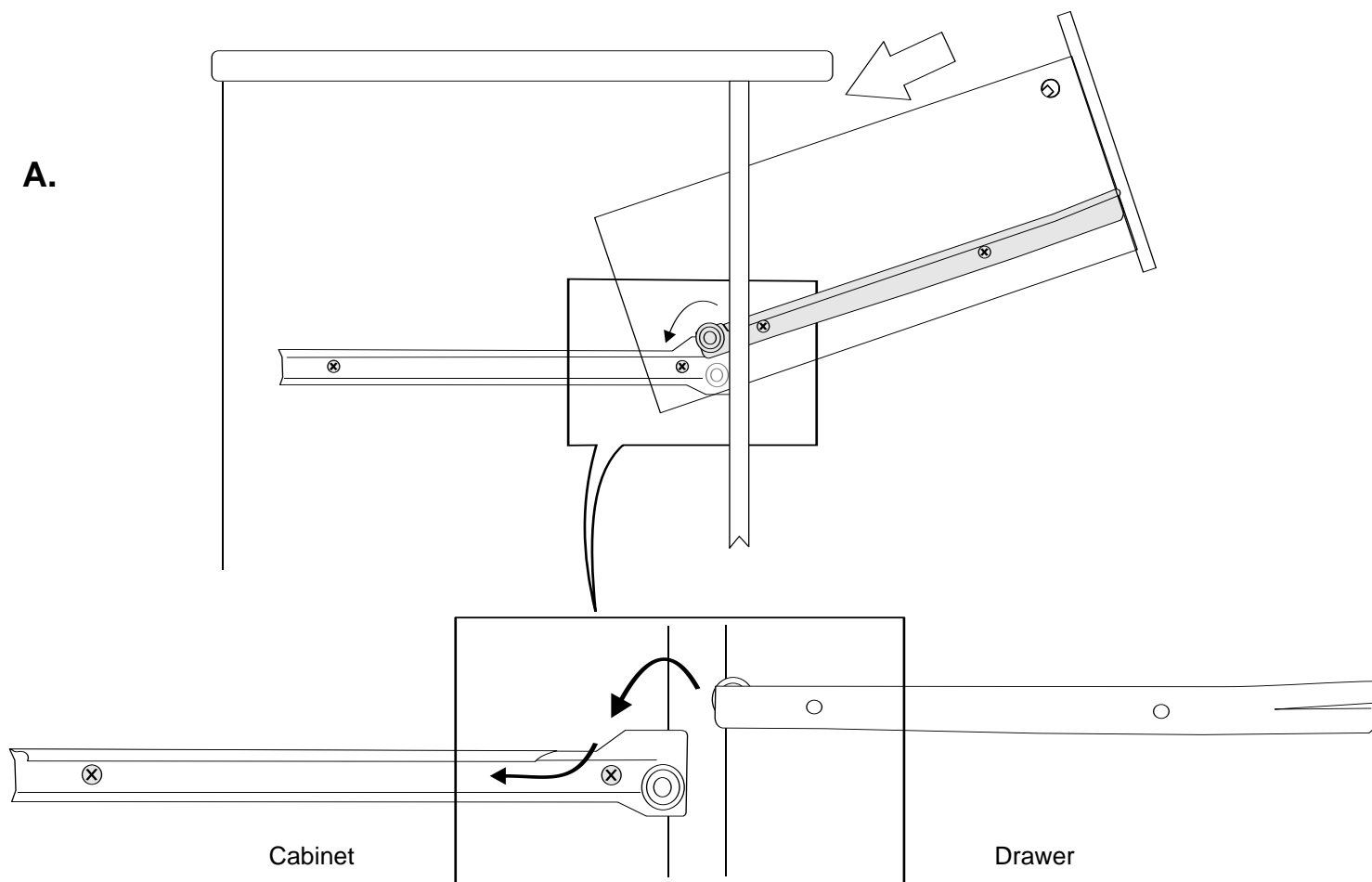
9i Attach knobs with machine screws



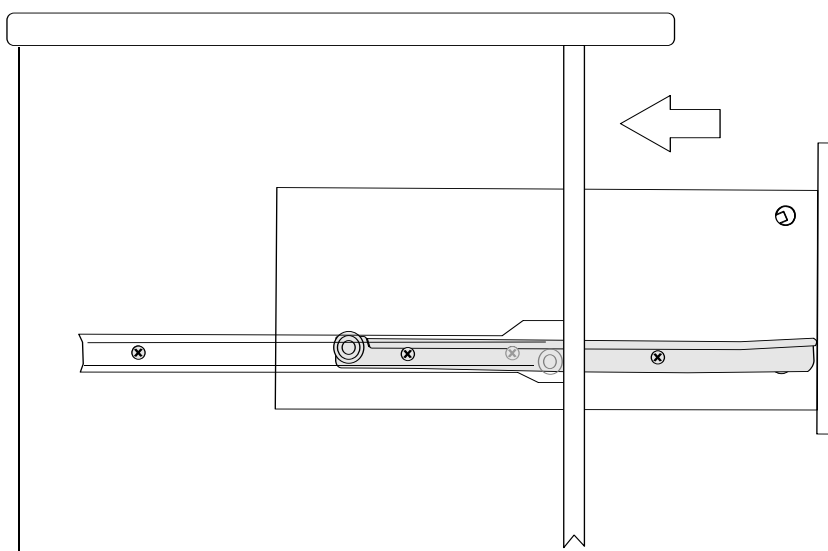
STEP 10 Estimated Time: 2 minutes

Insert drawers

A.



B.

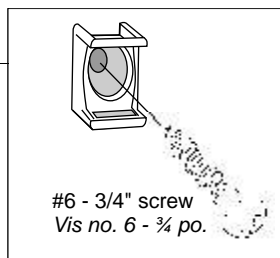
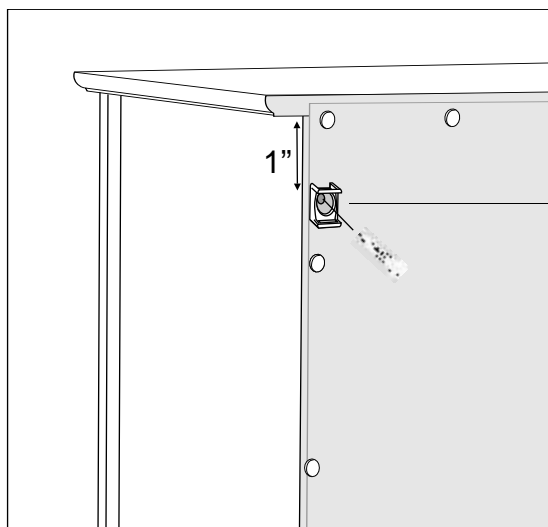


Note: When drawers are installed correctly, you will not be able to remove them without first lifting up the drawer front.

STEP 11 Attaching and Using the Cable Tie

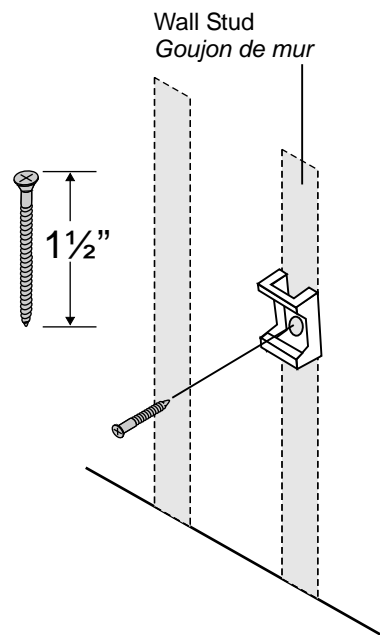
We strongly recommend using a cable tie on all furniture, especially if small children have access

- 11a.** With the #6-3/4" screw, attach one of the mounting bases to one of the sides 1 inch from the top.



- 11b.** Attach the 2nd mounting base to the wall 2" lower than the one on the cabinet

Important: Find a wall stud and attach the mounting base with a 1½" screw (not included). If you cannot locate a stud, use an approved wall mounting system



- 11c.** Feed the cable tie through each mounting base and then through the locking mechanism to tighten.

