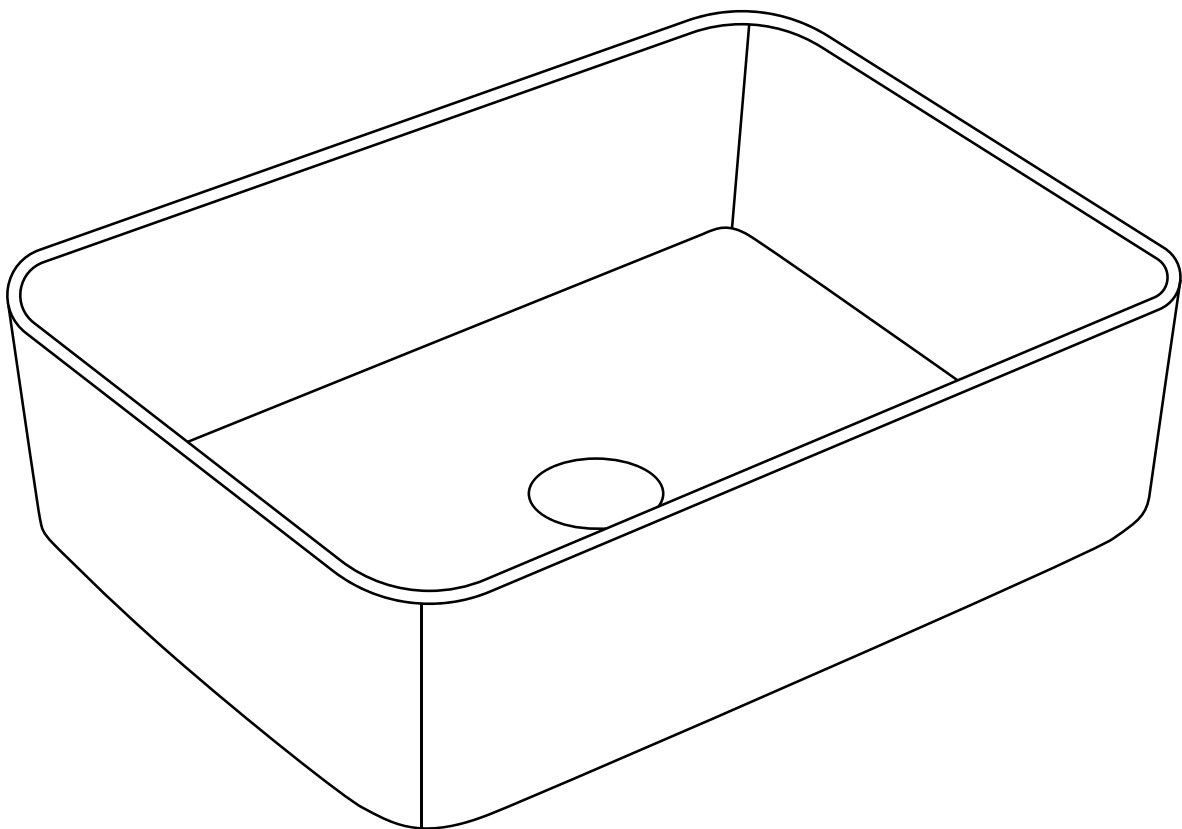


# INSTALLATION INSTRUCTION

---

DeerValley®

## Ceramic Vessel Bathroom Sink





## Prior to Installation:

- Observe and comply with all building and plumbing codes.
- As our basins are handcrafted and dimensions are approximate, we recommend using the actual basin for the cutout.
- Use 100% Silicone (non-water based) for all installations.
- Ensure adequate space behind the basin for faucet and backsplash, including the full range of motion for faucet handles and spouts.
- Make sure a watertight seal exists on all drain connections.
- Do not place basin directly on floor. After unpacking, place basin on protective material such as packing materials.
- Remember to always use non-abrasive cleaners on DeerValley sinks.

### General Recommendations:

Please read installation instructions thoroughly before installing the vessel sink.

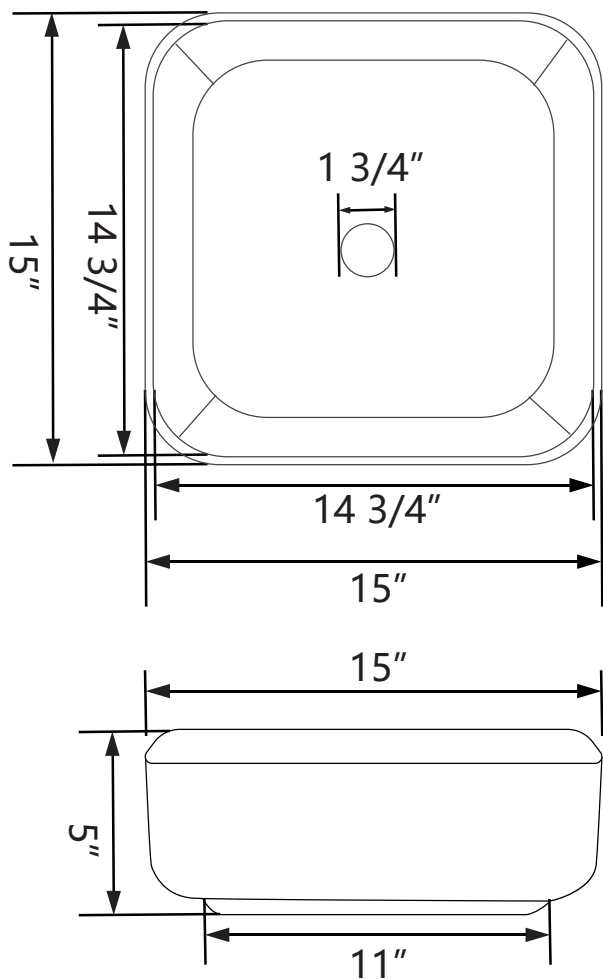
Be sure to use proper tools and always wear proper personal safety accessories for your protection.

**If you have any questions or concerns  
please contact us:**

**312-626-9466**

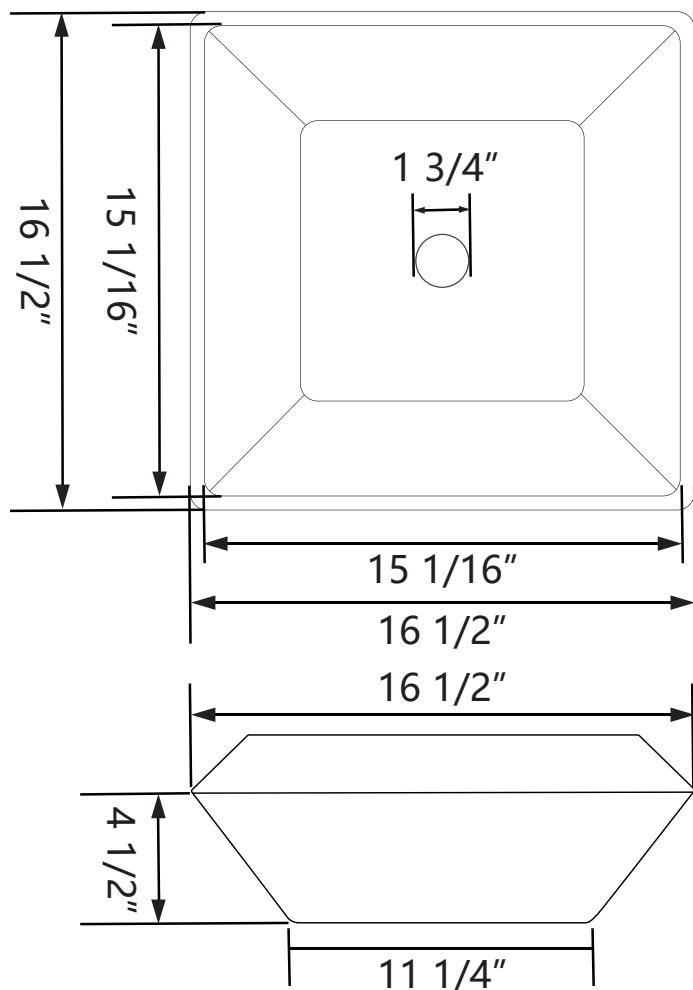
**[support@deervalleybath.com](mailto:support@deervalleybath.com)**

### 1. DIMENSIONS



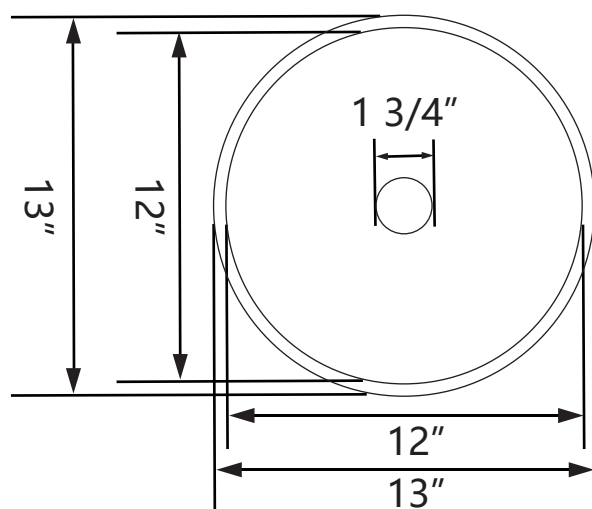
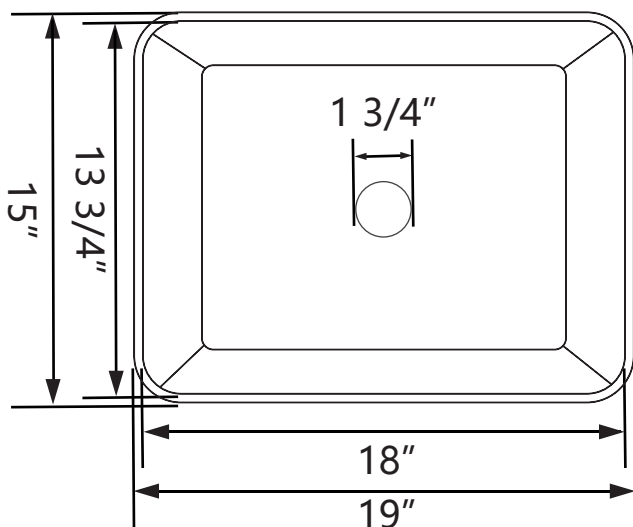
**DV-1V021**

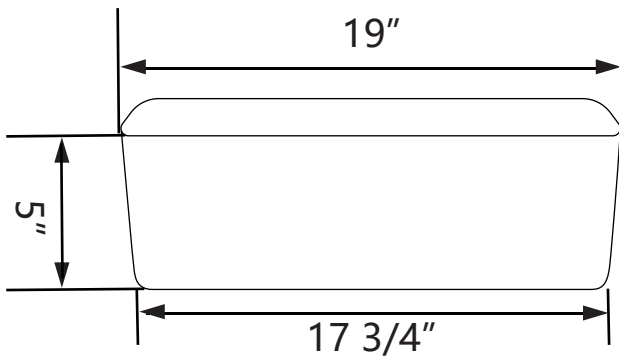
**15" \* 15" \* 5"**



**DV-1V022S**

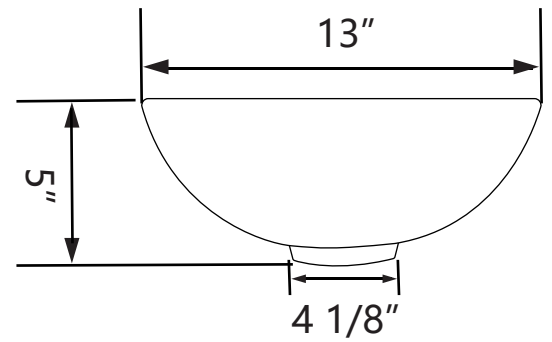
**16-1/2" \* 16-1/2" \* 4-1/2"**





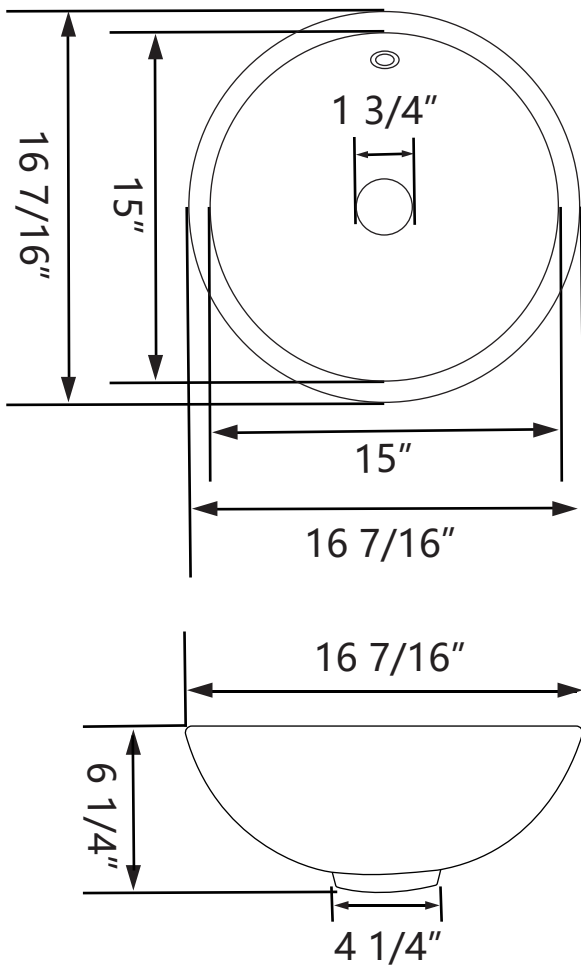
**DV-1V031**

**19" \* 15" \* 5"**



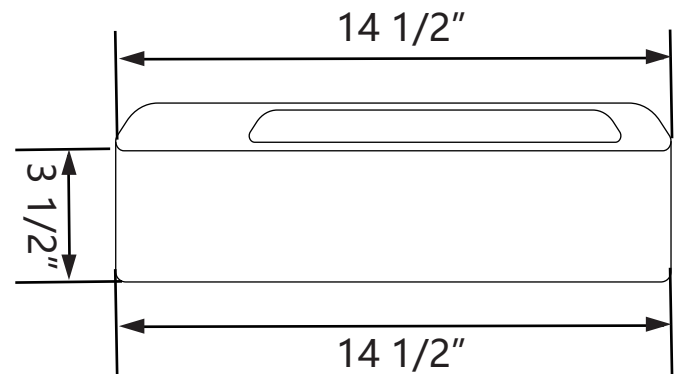
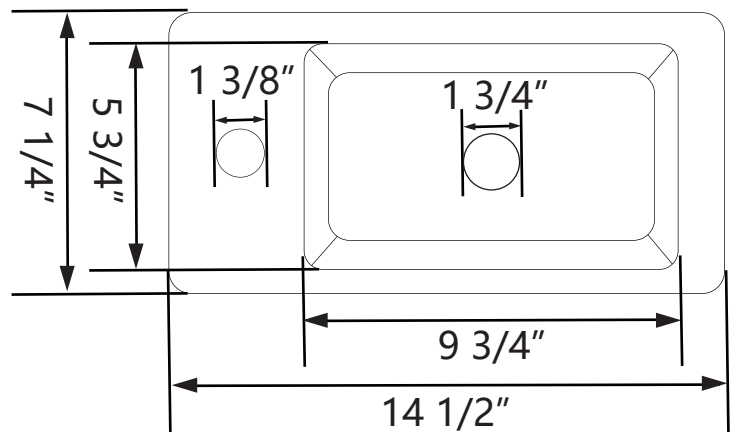
**DV-1V061**

**13" \* 13" \* 5"**



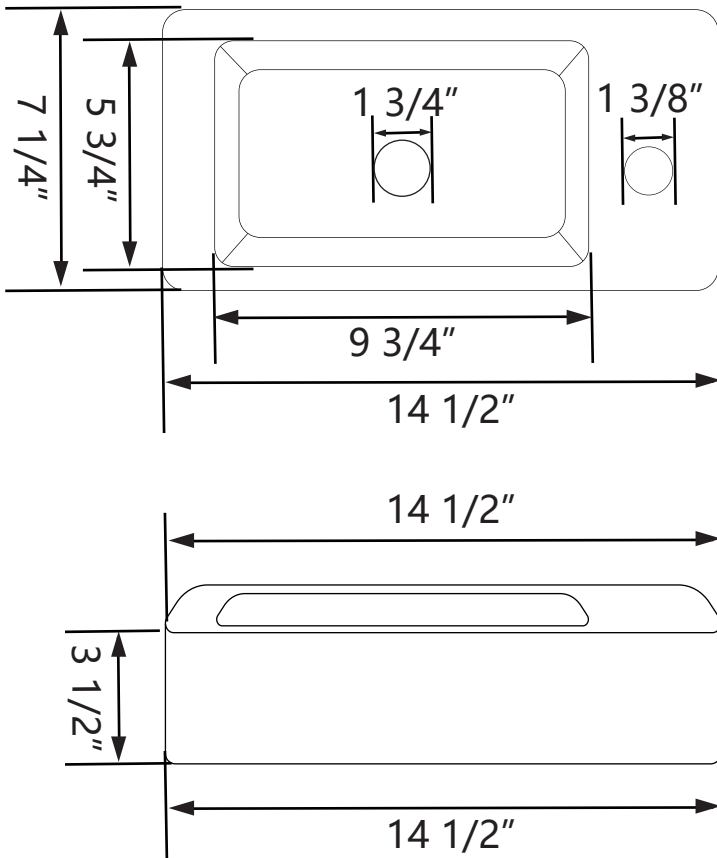
**DV-1V062**

**16-7/16" \* 16-7/16" \* 6-1/4"**



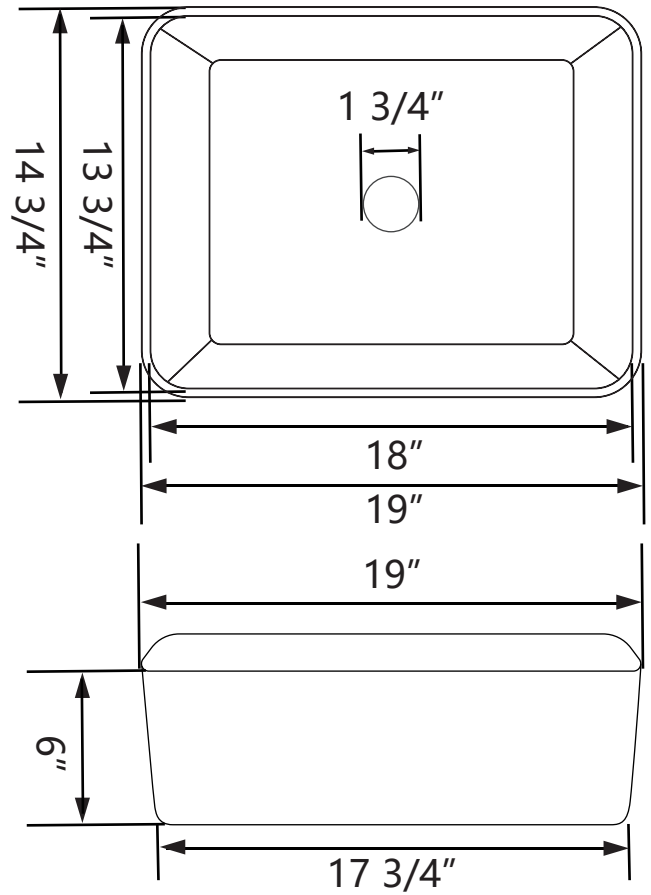
**DV-1V081L**

**14-1/2" \* 7-1/4" \* 3-1/2"**



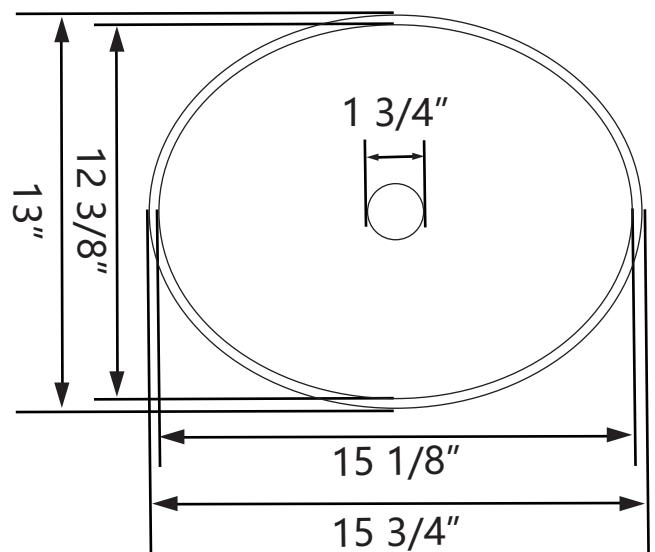
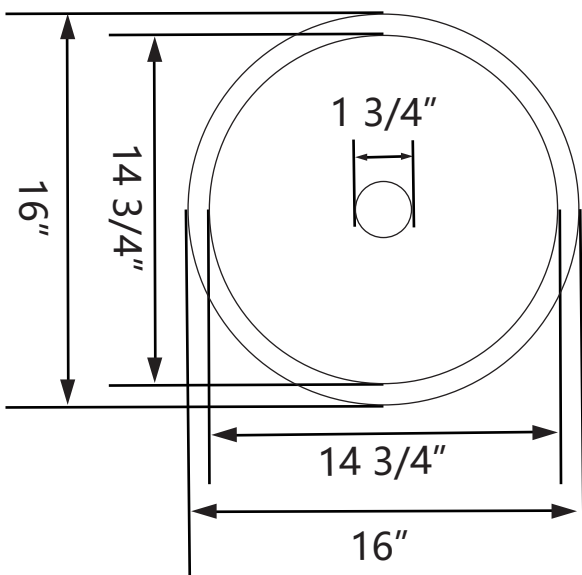
**DV-1V081RS**

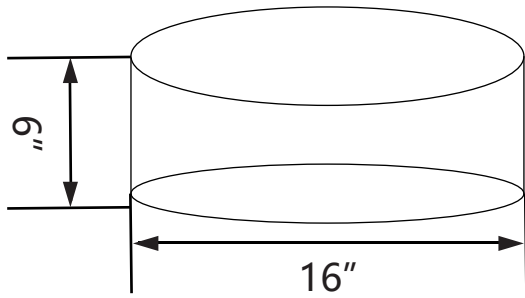
**14-1/2" \* 7-1/4" \* 3-1/2"**



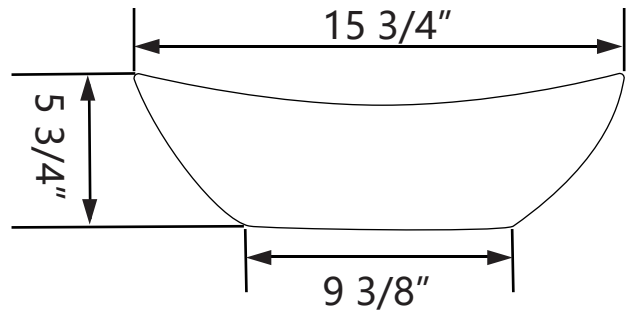
**DV-2V031**

**19" \* 14-3/4" \* 6"**

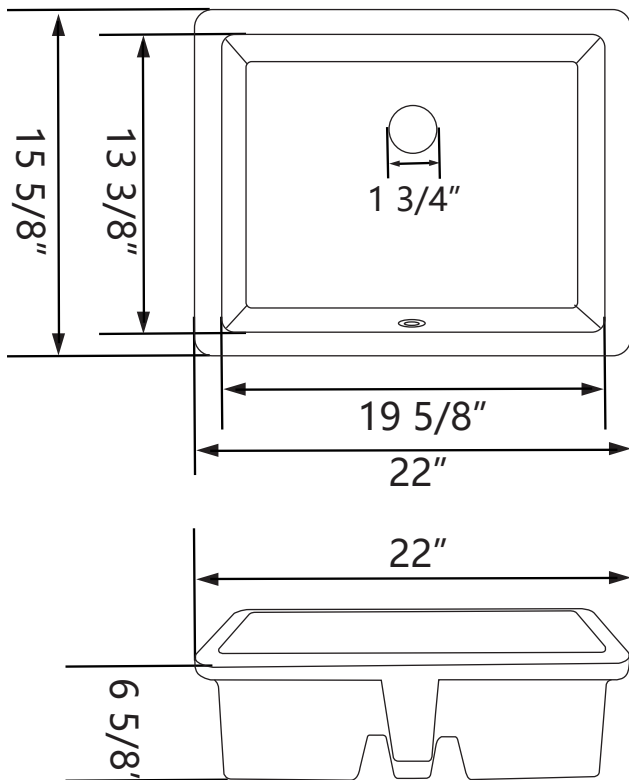




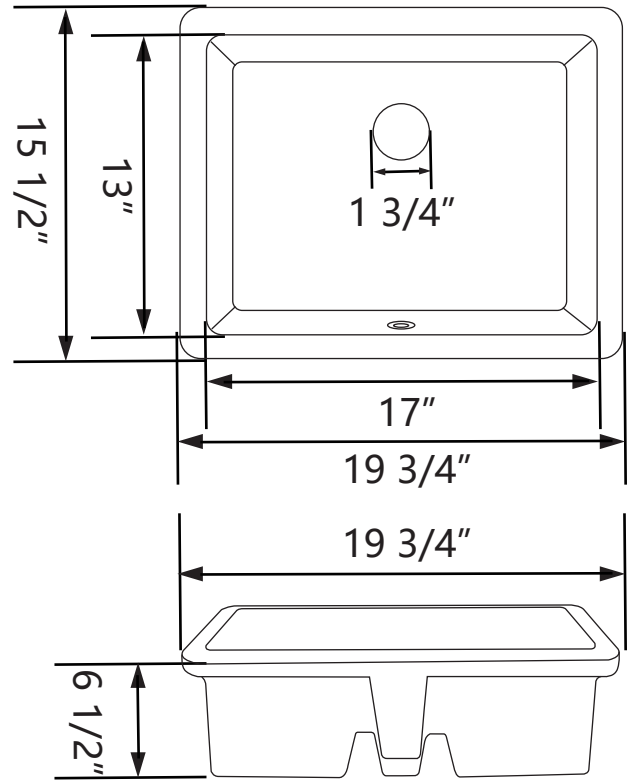
**DV-1V063**  
16" \* 16" \* 6"



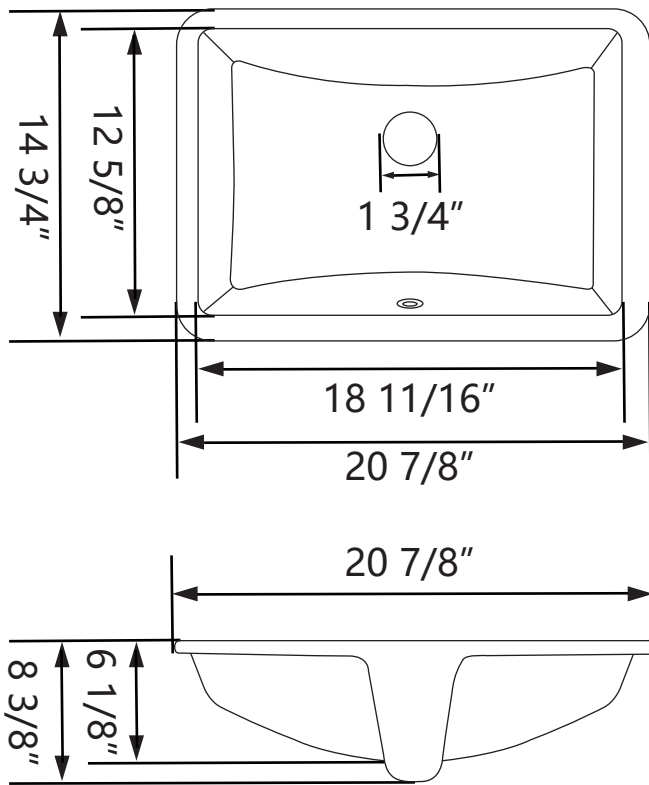
**DV-1V051**  
15-3/4" \* 13" \* 5-3/4"



**DV-1U202**  
22" \* 15-5/8" \* 6-5/8"

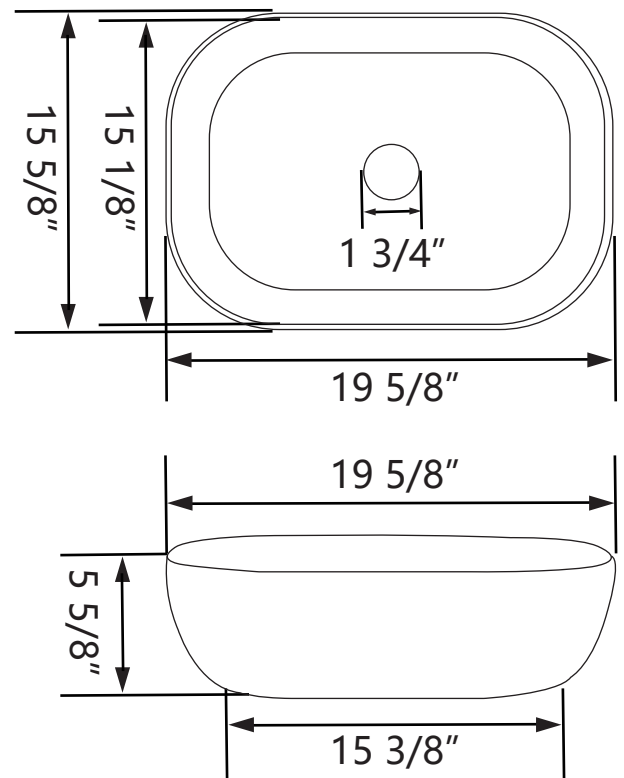


**DV-1U201**  
19-3/4" \* 15-1/2" \* 6-1/2"



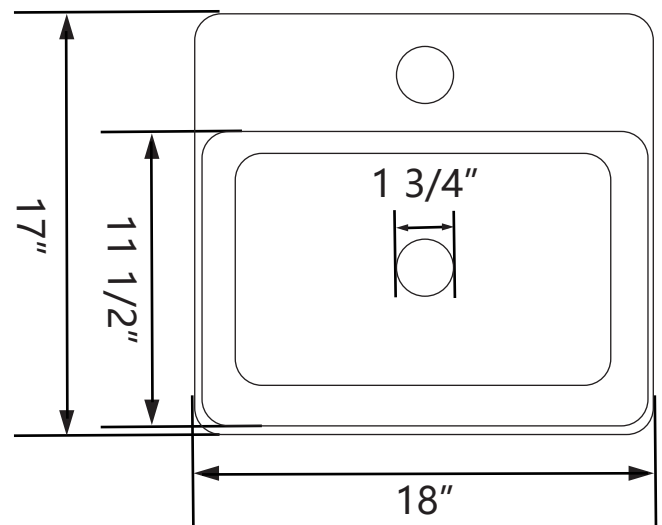
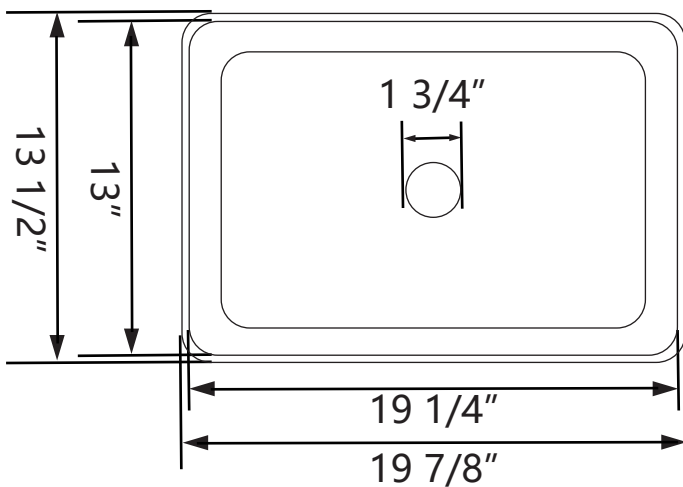
**DV-1U101**

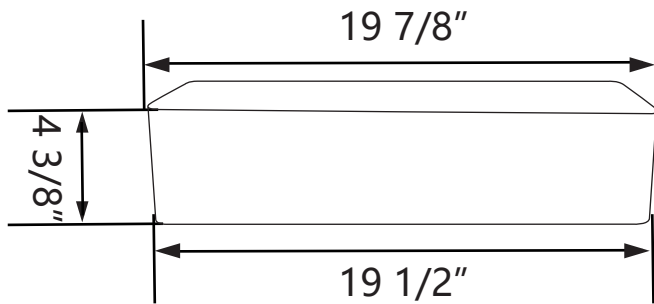
**20-7/8" \* 14-3/4" \* 8-3/8"**



**DV-1V432**

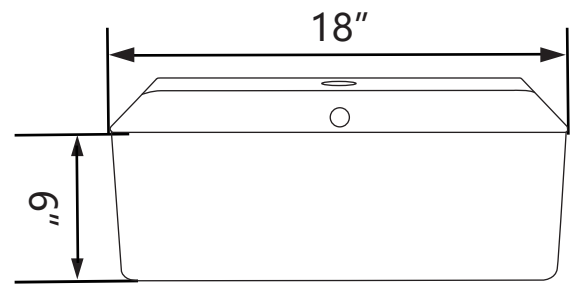
**19-5/8" \* 15-5/8" \* 5-5/8"**





**DV-1V032**

**19-7/8" \* 13-1/2" \* 4-3/8"**

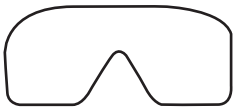


**DV-1V231**

**18" \* 17" \* 6"**

## 2. INSTRUCTIONS

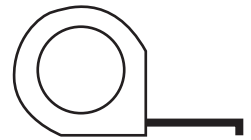
### (1) SUGGESTED TOOLS AND MATERIALS



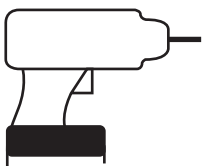
Safety Glasses



Pencil



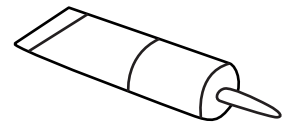
Tape Measure



Drill



Level

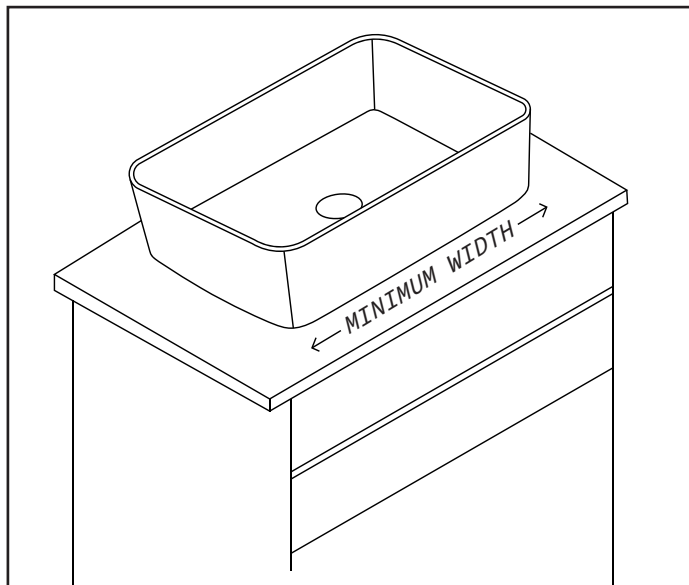


Thread Sealant

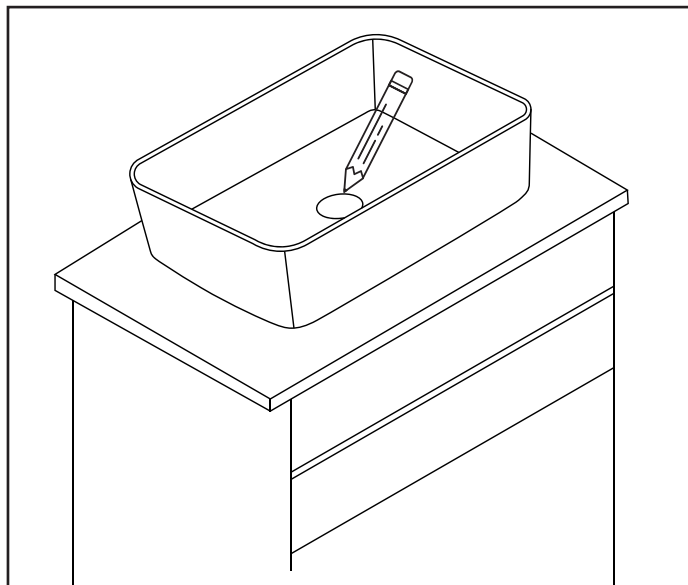
- Sealant - We recommend the use of a stone, marble and granite silicone caulk or a general purpose silicone sealant.



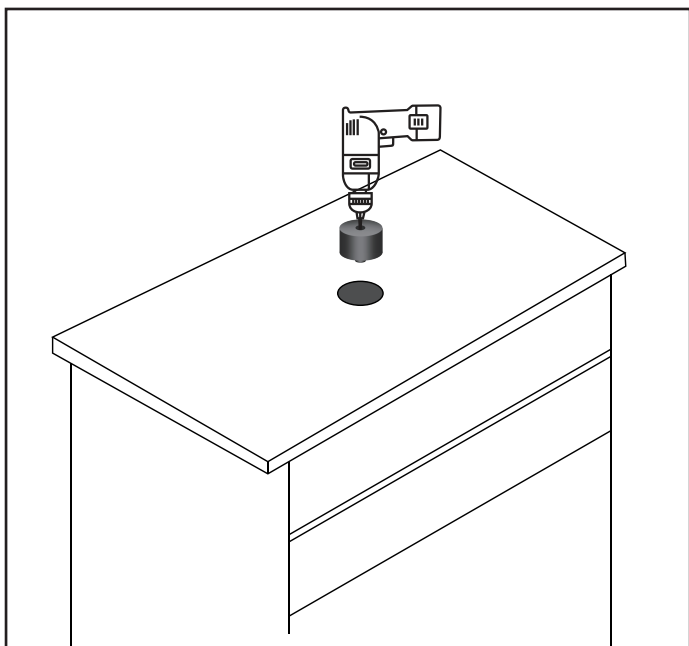
### (2) INSTALLATION STEPS



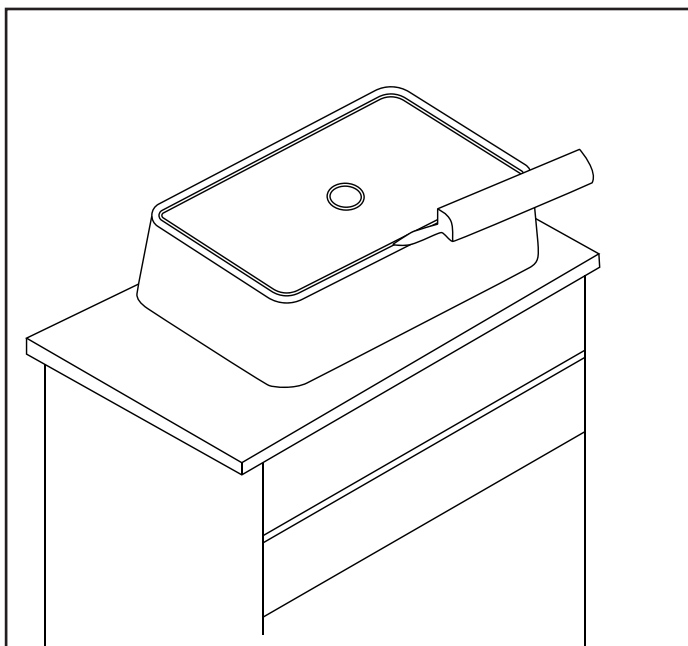
**Step1:**  
Place the vessel sink on the installation countertop and confirm the size of the vessel sink is appropriate to ensure that there is enough space left behind to install the faucet.



**Step2:**  
Mark the drain hole location on the countertop with a pencil.



**Step3:**  
Cut countertop for drain opening. The recommended size of the countertop drain opening is 1 3/4 inches to 2 inches.



**Step4:**  
Put the vessel sink up side down and apply silicone to the bottom edge.

DeerValley products are made with quality materials and excellent craftsmanship to provide the customers a long-lasting product. In the case of any defects in materials or craftsmanship under regular use were inspected in the first year of purchase, DeerValley will provide replacement parts at no charge, or at its option, replace any product or part of the product that is deemed defective, under normal installation, use, service and maintenance. This warranty applies only to the original purchaser. Proof of purchase will be required in the case of a claim.

DeerValley recommends the installations to be made by a licensed, professional plumber. DeerValley will not be held responsible for any damage or product failure due to improper installation, misuse, or failure to use a licensed professional. DeerValley is not responsible for any removal or installation cost.

This One Year Limited Warranty will be voided if:

- The installation recommendations were not followed.
- The product has been moved from its initial place of installation.
- The product has been modified.
- The product has been subjected to improper maintenance, abuse, misuse, excessive use of chemicals, accident or other damages.

DeerValley makes no implication that products comply with any or all local building or plumbing codes. It is the consumer's responsibility to determine local code compliance. This warranty extends to the original purchaser and first consumer.

DeerValley is not liable for any incidental, consequential or special damages associated with the return, replacement, installation or use of your product. This includes freight costs, cartridge replacement, labor, travel time, lost profit, home damages and other contingent liabilities and costs (Including, without limitation, costs associated with experts, investigations, analyses, attorneys and other professionals and services).

The DeerValley warranty is a comprehensive and explicit limit of liability, and all items outside of it are not addressable by or the responsibility of DeerValley. Certain states have variances regarding implied warranties and in those situations we remain fully compliant.

**WARNING:** Content may contain sharp and other possibly harmful pieces and may cause a hazard to children and adults, DeerValley is not responsible in any way for personal damage.