







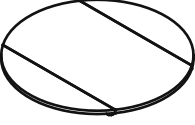
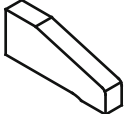
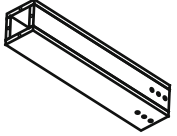
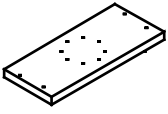
# Assembly Instructions

## DROP LEAF PEDESTAL TABLE TOP & BASE

### HARDWARE PART:

					
Hex Nut 8 pcs	Lock Washer 12 pcs	Flat Washer 12pcs	Wrench 1 pc	JCBB Bolt 4 pcs	Allen Key 1 pc

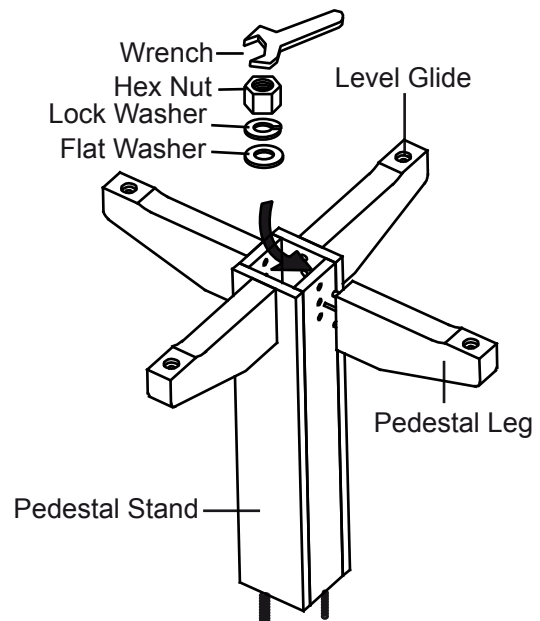
### TABLE PARTS:

			
Table Top 1pc	Pedestal Leg 4pcs	Pedestal stand 1pc	Mounting plate 1pc

**NOTE:** THE UNIT SHOULD BE ASSEMBLED BY 2 OR MORE PEOPLE.

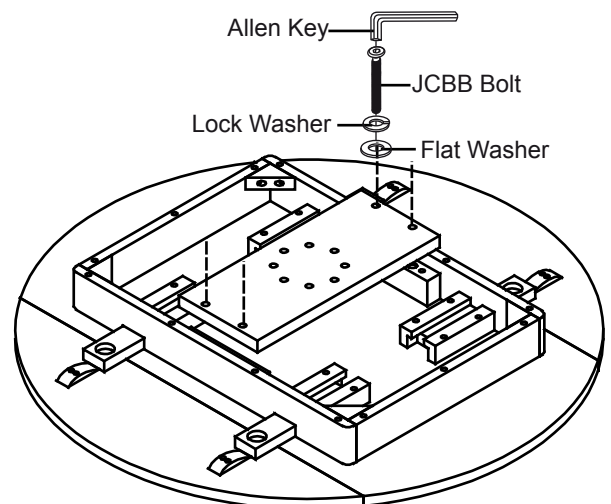
### STEP 1

Turn the pedestal upside down. Attach legs by inserting hanger bolts through pre-drilled holes on pedestal. Put a **Flat Washers**, **Lock Washers** and **Hex Nut** onto the hanger bolts then tighten with the provided **Wrench**.



### STEP 2

Position the table top upside down on a smooth, protective surface such as carpet. Attach Mounting Plate as shown. Secure with **Flat Washers**, **Lock Washers** and **JCBB Bolt**, then tighten all **JCBB Bolts** with **Allen Key** provided.

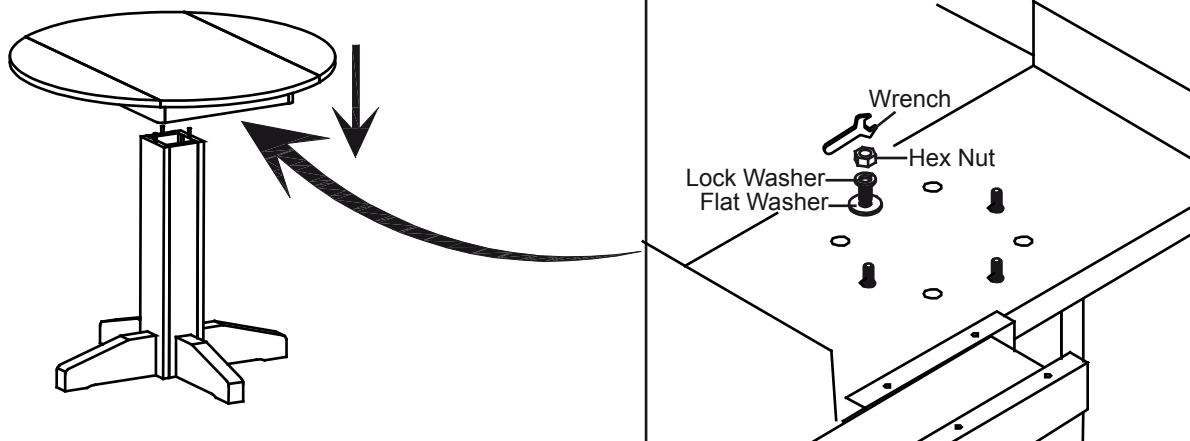


# Assembly Instructions

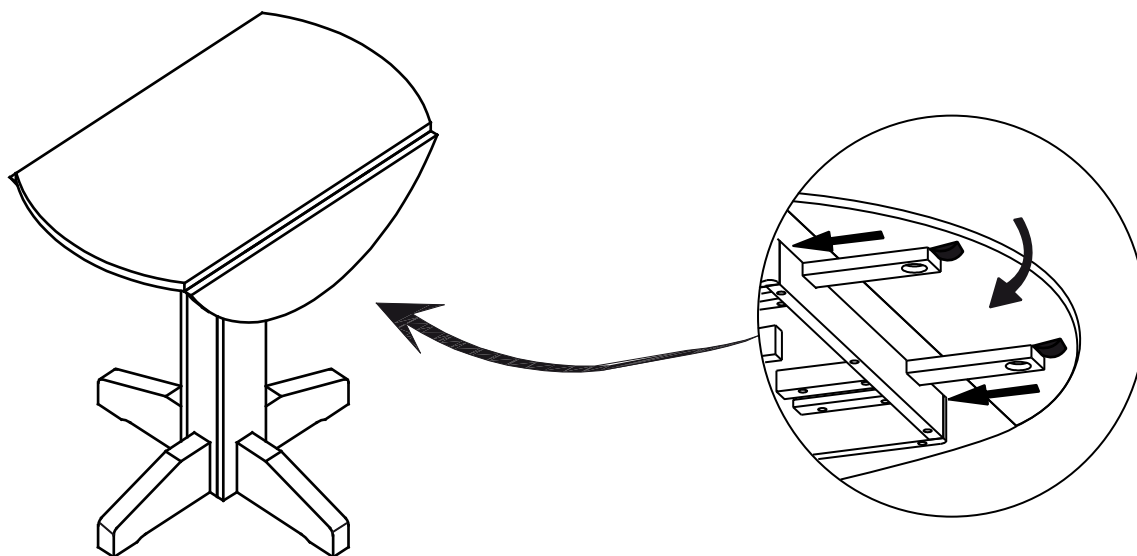
## DROP LEAF PEDESTAL TABLE TOP & BASE

### STEP 3

Align and attach the table top to the pedestal. Insert a **Flat Washers**, **Lock Washers** and **Hex Nuts** onto the hanger bolts. Tighten all **Hex Nuts** with the provided **Wrench**.



### STEP 4



### STEP 5

