



Installation Instructions For Restoration Long Plates

Passage and Privacy

With step-by-step Installation Pictograms & Drilling Template

Applies to:

Craftsman • Mission • Prairie • Deco • New York • Egg & Dart
Meadows • Victorian • Ovolo



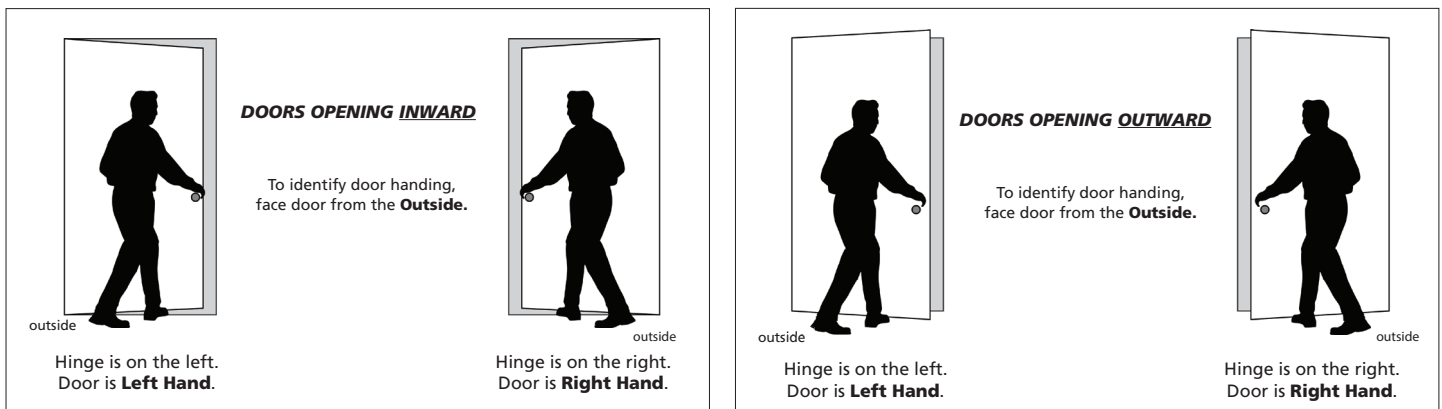
Tools Required: #2 Phillips Screwdriver, electric drill, 7/64" drill bit

Door Hanging - Long Plates

Door handing is critical for Split-Finish, or Split-Design products in the privacy function. And, it's helpful positioning the latch tongue in relation to the strike plate.

Inside of Door - The **Inside** of a door refers to the side of the door that faces the room. For example, for a bedroom door on a hallway, the **Inside** of the door would face the bedroom.

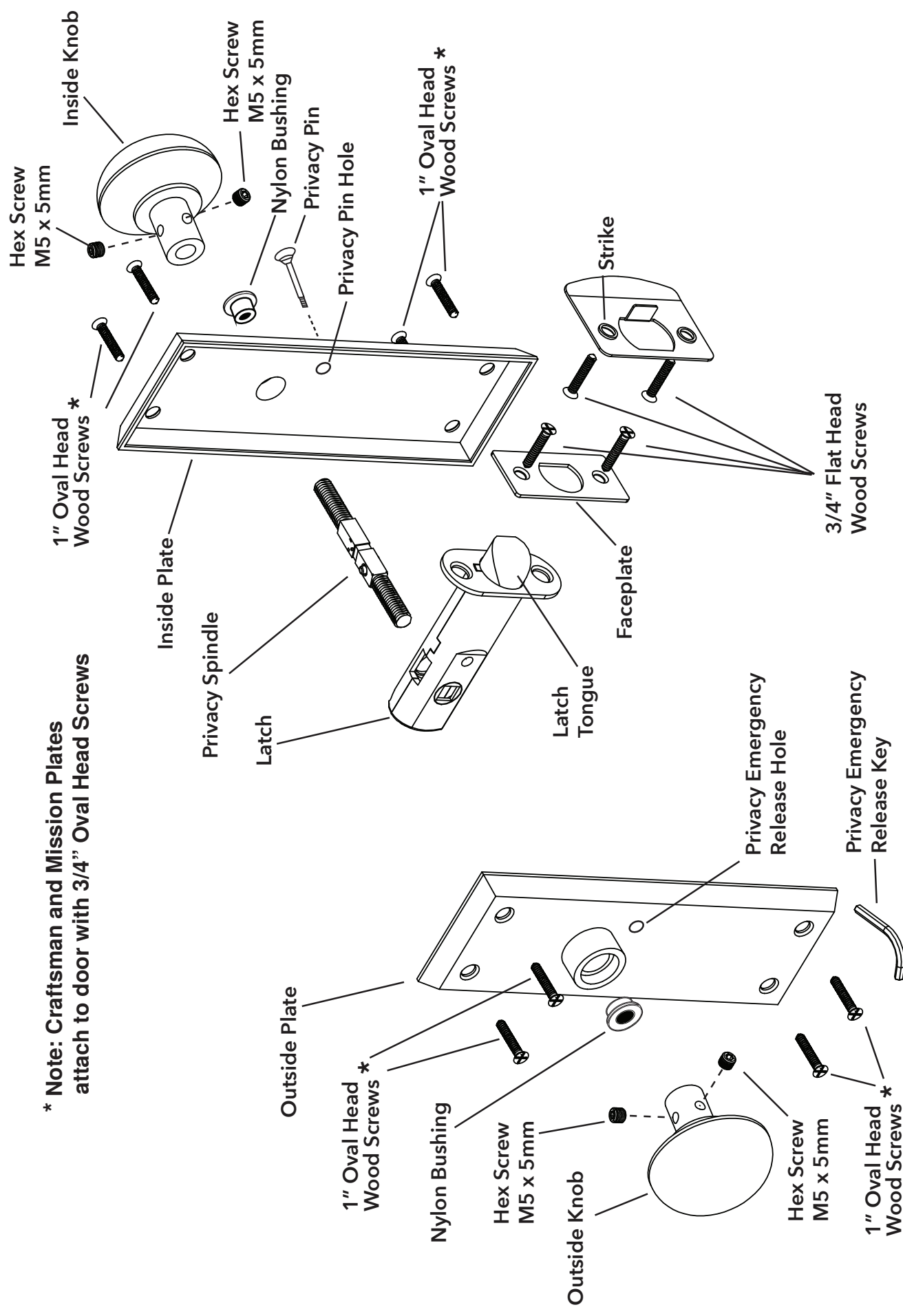
Outside of Door - The **Outside** of a door refers to the side of the door that faces away from the room. The **Outside** of a door is generally more visible to visitors, and therefore a rosette on this side of the door has no visible screws. For example, on a bedroom door, the **Outside** would face the hallway.



INSTALLATION RULES:

- 1) Long Plate wood mounting screws should **NOT** be installed using power tools.
- 2) Privacy pin holes are next to the door side containing the latch.
- 3) Latch tongues have a beveled side, and this side should contact the curved end of the face plate, and curved end of the strike plate.
(See ***Latch Tongue Note** on page 3.)

Exploded Drawing for Restoration Long Plate Passage/Privacy



* Note: Craftsman and Mission Plates attach to door with 3/4" Oval Head Screws

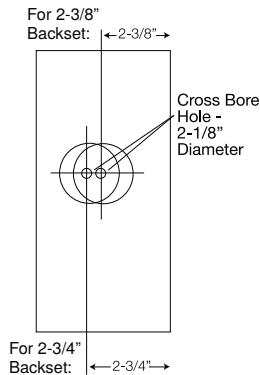
Installation Instructions For Restoration Long Plates

**Fits doors
1-3/8" to 1-3/4" thick**

Passage & Privacy

A

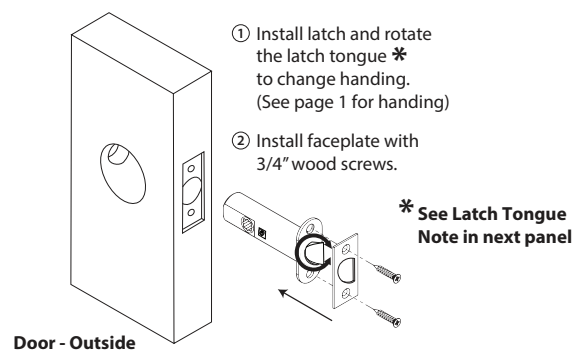
Backset Information



NOTE:
DRILLING TEMPLATES
FOR PILOT HOLES
ON SEPARATE
INCLUDED SHEET

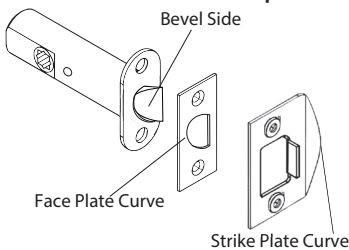
B

Install Latch



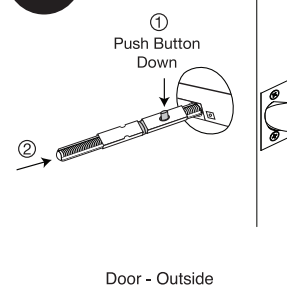
* Latch Tongue Note

Bevel side of latch tongue should contact curved end of face plate, and curved end of strike plate.



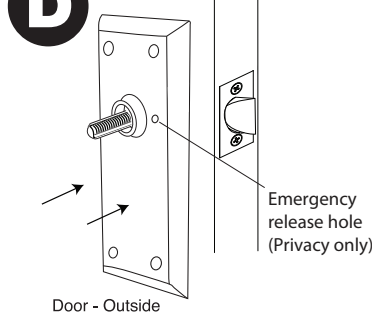
C

Insert Spindle



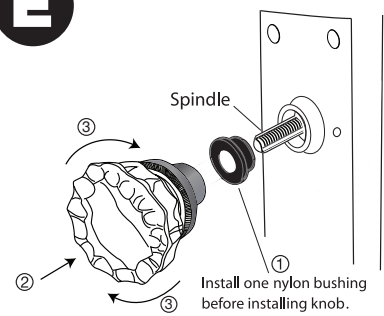
D

Install Exterior Plate



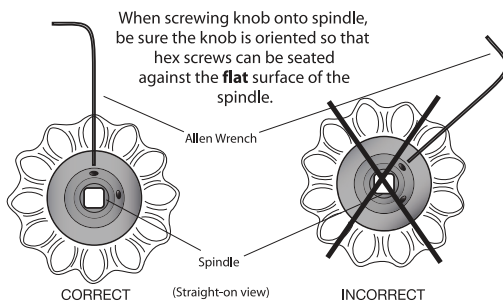
E

Install Bushing & Knob



F

Tighten Hex Screws



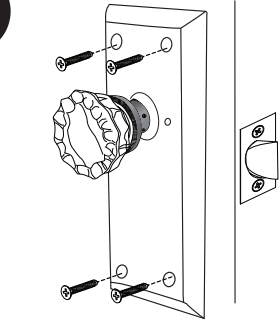
G

Insert both hex screws and tighten



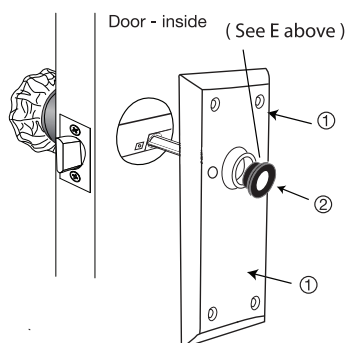
H

Insert wood screws



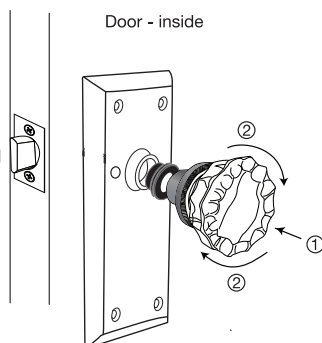
I

Install Interior Plate



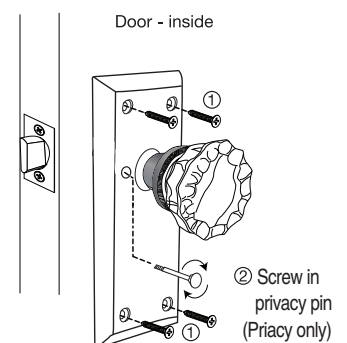
J

Install Bushing and Knob



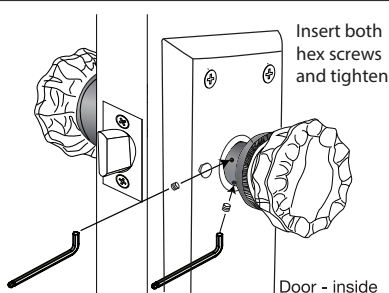
K

Insert wood screws



L

Tighten Hex Screws

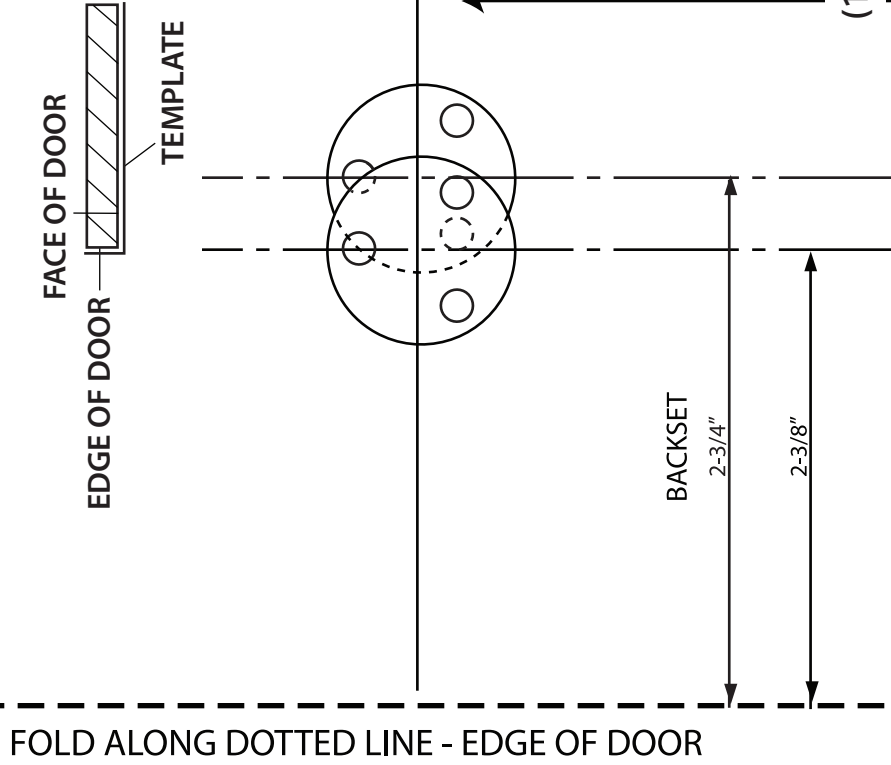


NOTE:
If knobs do not turn freely;
loosen one knob and rotate
counter clockwise for
1/4 turn, then retighten
the hex screws.
Repeat if necessary.

Need help? Please Call us at
1-800-522-7336
Monday-Friday
7am-5pm Mountain Time
or visit
www.NostalgicWarehouse.com/support

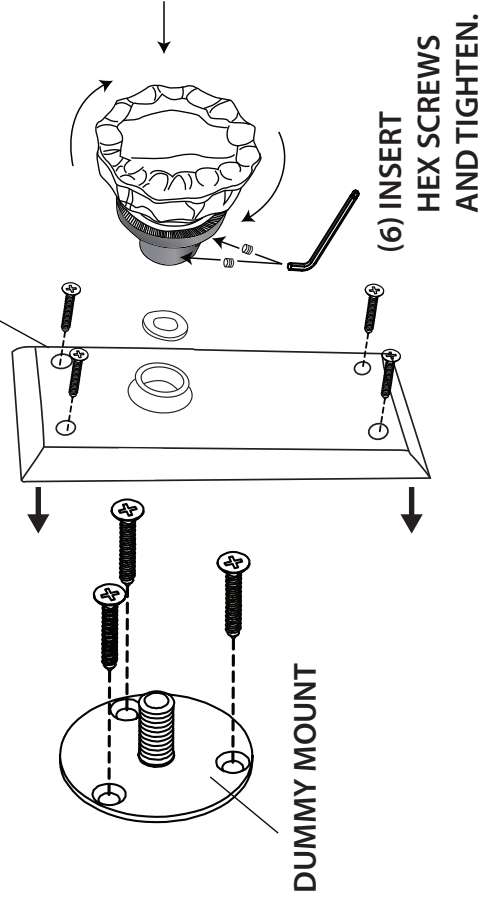
DUMMY INSTALLATION AND DOOR PREPARATION TEMPLATE

(2) FOLD TEMPLATE ALONG DOTTED LINE, AND POSITION FOLD ON THE EDGE OF THE DOOR. TAPE TEMPLATE TO FACE OF DOOR.



(5) ALIGN SIDE OF LONG PLATE WITH DOOR EDGE.

(4) INSERT THREE WOOD SCREWS, SLIDE LONG PLATE OVER MOUNT, AND SCREW-ON KNOB.



(1) MEASURE FROM THE FLOOR TO THE CENTER OF EXISTING LOCKS, AND USE THIS DISTANCE AS THE CENTER OF THE DUMMY MOUNT. IF THERE ARE NO EXISTING LOCKS, POSITION THE DUMMY MOUNT 36" TO 38" FROM THE FLOOR.

(3) BEFORE DRILLING VERIFY THE BACKSET OF YOUR EXISTING DOORS IN YOUR HOUSE. DRILL PILOT HOLES USING A $7/64"$ DIAMETER BIT.