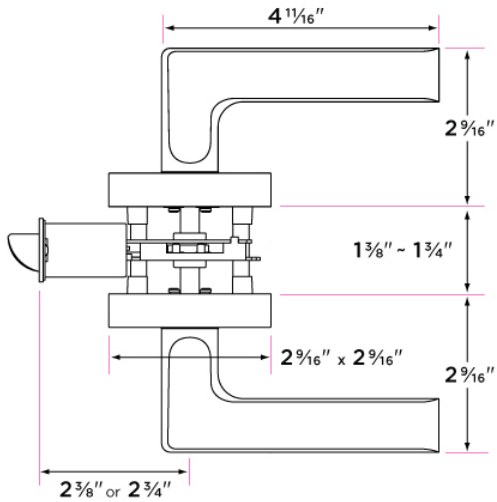
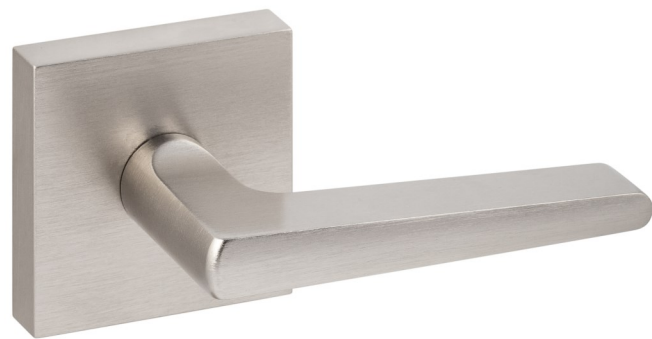


Basel Lever



DESCRIPTION	CASE
Passage (hall/closet) Both sides always free	12
Privacy (bed/bath) Locked by push pin. Unlocked by push pin, lever turn, or emergency pin outside	12
Entry-Locked/unlocked by inside finger turn or outside key	12
Dummy (closet) Inactive, single-sided, flush mount with two wood screws	24
Handleset Interior Trim	24

Finishes

- 15 Satin Nickel
- 26 Polished Chrome
- 11P Vintage Bronze
- FBL Flat Black
- SB Satin Brass

Strike Plate

2 ¼" x 1 ¾" full-lip radius corner standard

Door Handing

Non-handed

Latch

- 2 ¼" x 1" radius corner faceplate or
- 4 way drive-in latch
- Adjustable 2 ⅜" or 2 ¾"
- 45 degree turn radius
- ½" throw bolt

Door Thickness

1 ⅜" to 1 ¾"

Door Prep

- Crossbore 2 ⅞"
- Edgebore 1"

Key Cylinder

- 5 Pin KW1
- 5 Pin SC1 option

Materials

- Zinc
- All metal parts