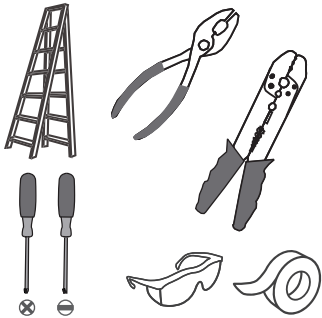
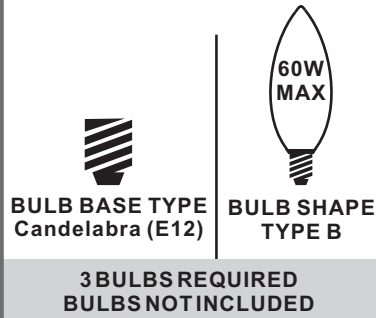


# Installation Guide

## Tools Required



## Light Source



## Warnings and Cautions

Turn off the electricity at the circuit breaker before installation. Consult a licensed electrician if in doubt about installation.

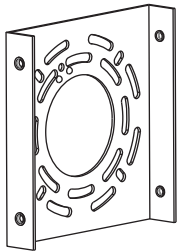
Turn off power to the fixture and allow the bulbs to cool before replacing.

## Package Contents

**Preparation:** Identify and inspect all parts before beginning the installation.

Missing or damaged parts? Contact your original place of purchase.

### PARTS BAG



**A** Inner Backplate x 1



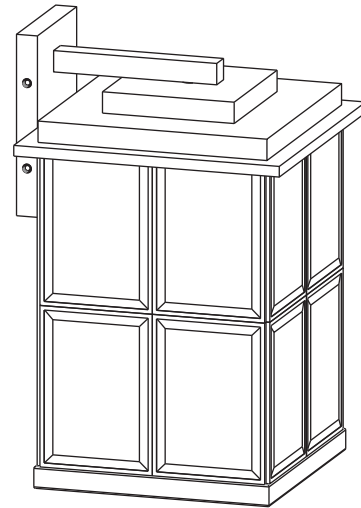
**B** Mounting Screw x 4



**C** Outlet Box Screw x 2



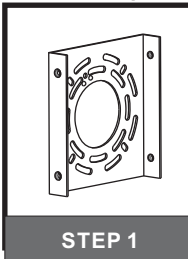
**D** Wire Connector x 3



**E** Fixture Body x 1

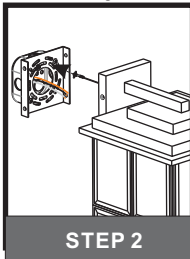
## Table of Contents

### Inner Backplate



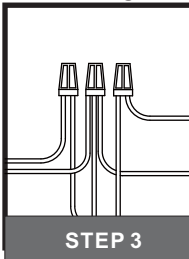
STEP 1

### Lanyard



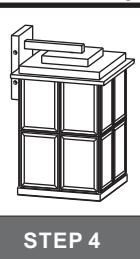
STEP 2

### Wiring



STEP 3

### Fixture Body



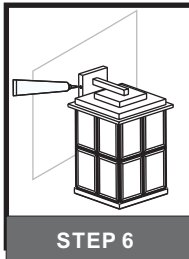
STEP 4

### Bulbs



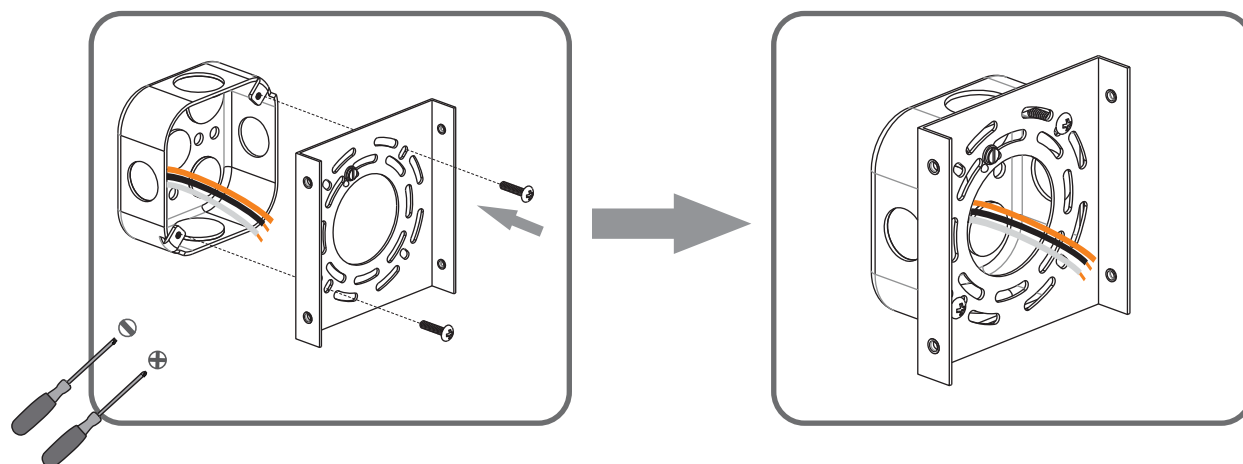
STEP 5

### Caulk

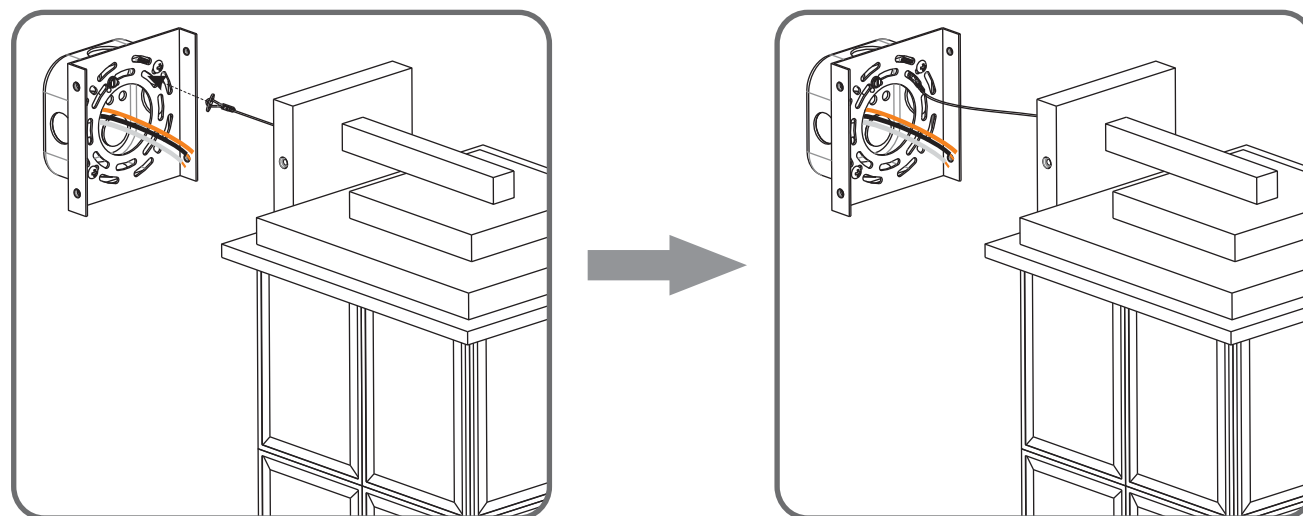


STEP 6

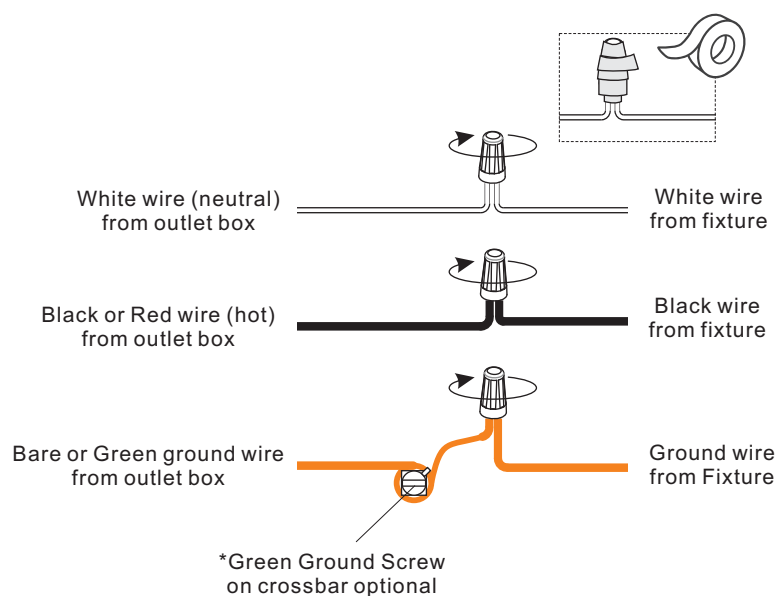
## STEP 1



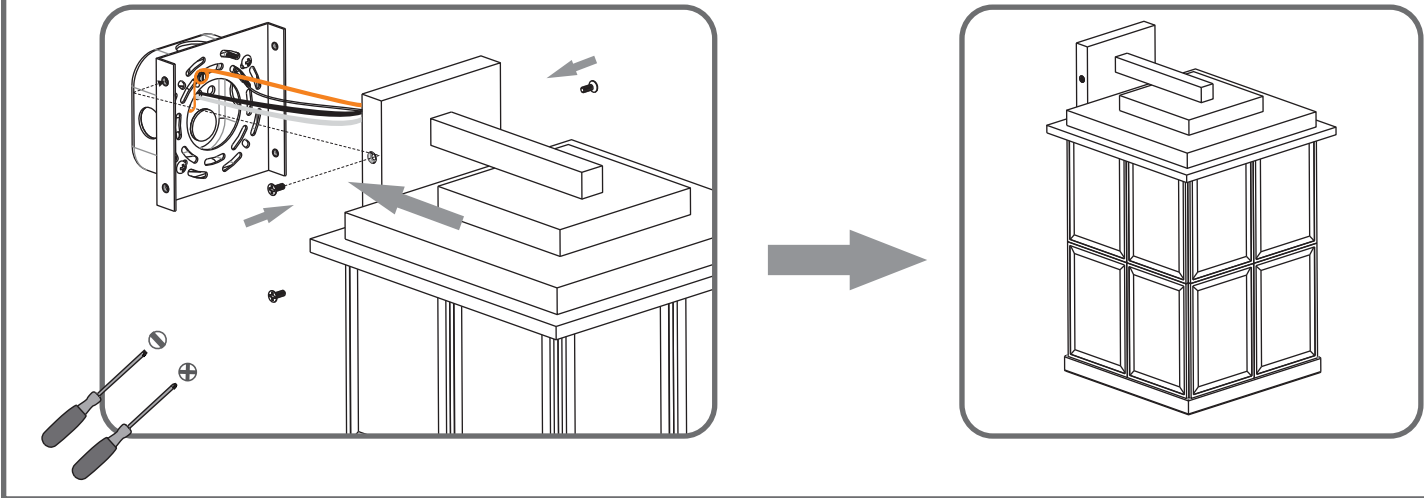
## STEP 2



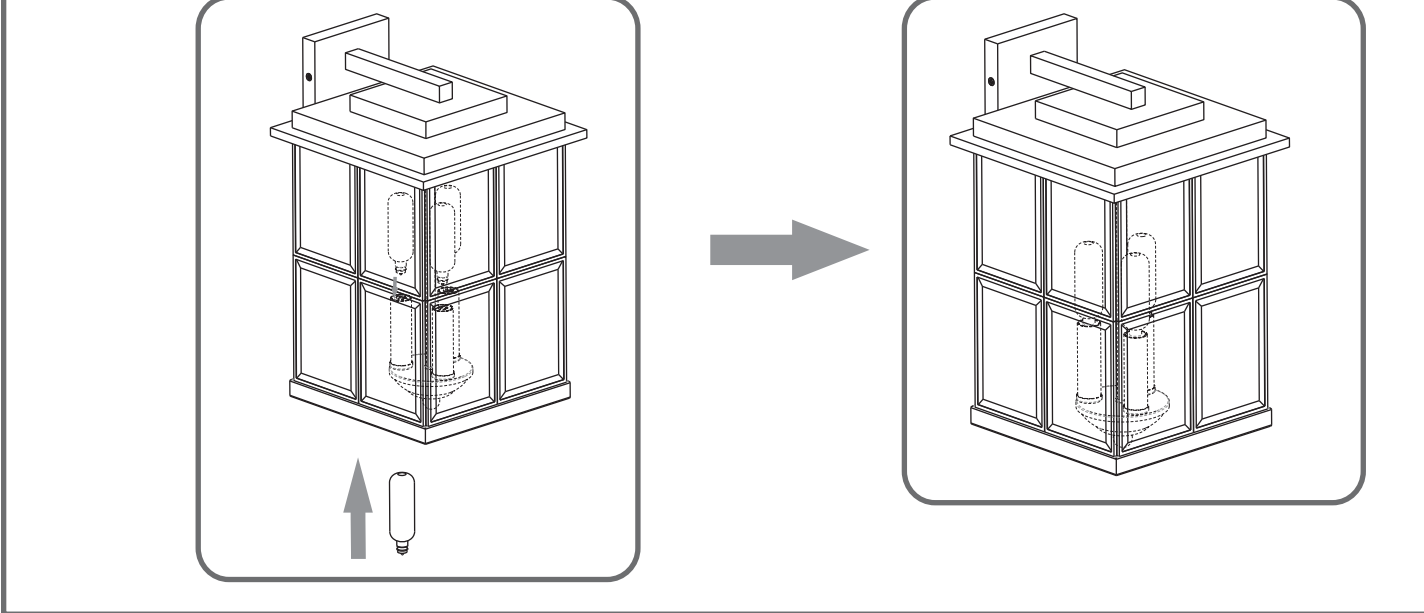
## STEP 3



**STEP 4**



**STEP 5**



**STEP 6**

