

## Features

- Oval basin.
- No faucet holes; requires wall- or counter-mount faucet.

## Material

- 20-gauge stainless steel.

## Installation

- Under-mount or drop-in.

## Required Accessories

K-7107 Decorative drain

or

K-7108 Decorative Drain

or

K-7129 Drain

or

K-7114 Pop-Up Drain

or

K-7124 Pop-Up Clicker Drain

or

K-7127 Drain

## Recommended Accessories

K-8998 P-Trap

## Components

Additional included component/s: Basin clamp assembly, and Cutout template.



**ADA**

## Codes/Standards

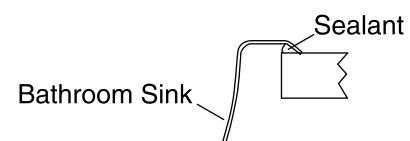
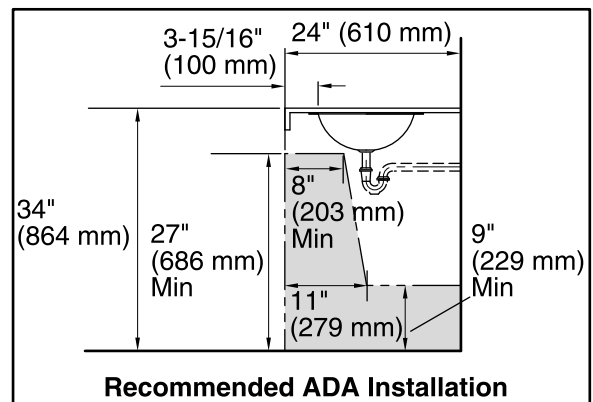
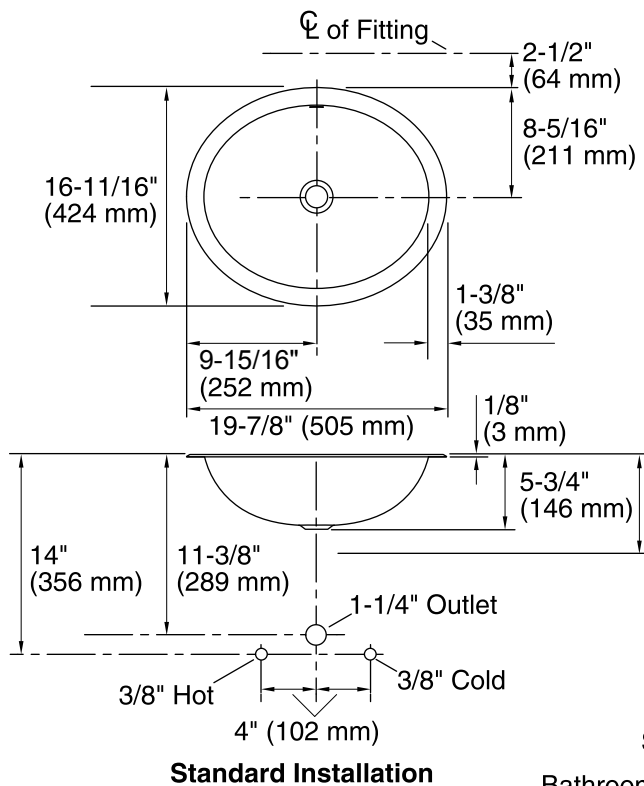
ASME A112.19.3/CSA B45.4

ADA

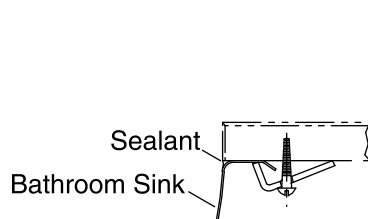
ICC/ANSI A117.1

## Kohler One-Year Limited Warranty

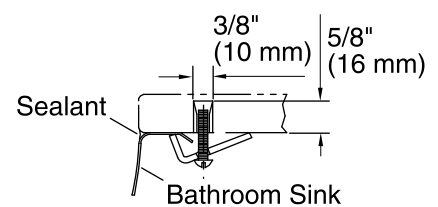
See website for detailed warranty information.



**Drop-In Installation**



**Wood Installation**



**Marble Installation**

## Technical Information

All product dimensions are nominal.

Installation:	Drop-In, Under-mount
Bowl area	Water depth: 5-3/8" (137 mm)
Drain hole:	1-5/8" (41 mm)
Template:	Drop-in, 1248333-7, required, included Under-mount, 1248333-7, required, included

## Notes

Install this product according to the installation guide.

Installer must supply anchors based on countertop material and thickness.

ADA compliant when installed to the specific requirements of these regulations.