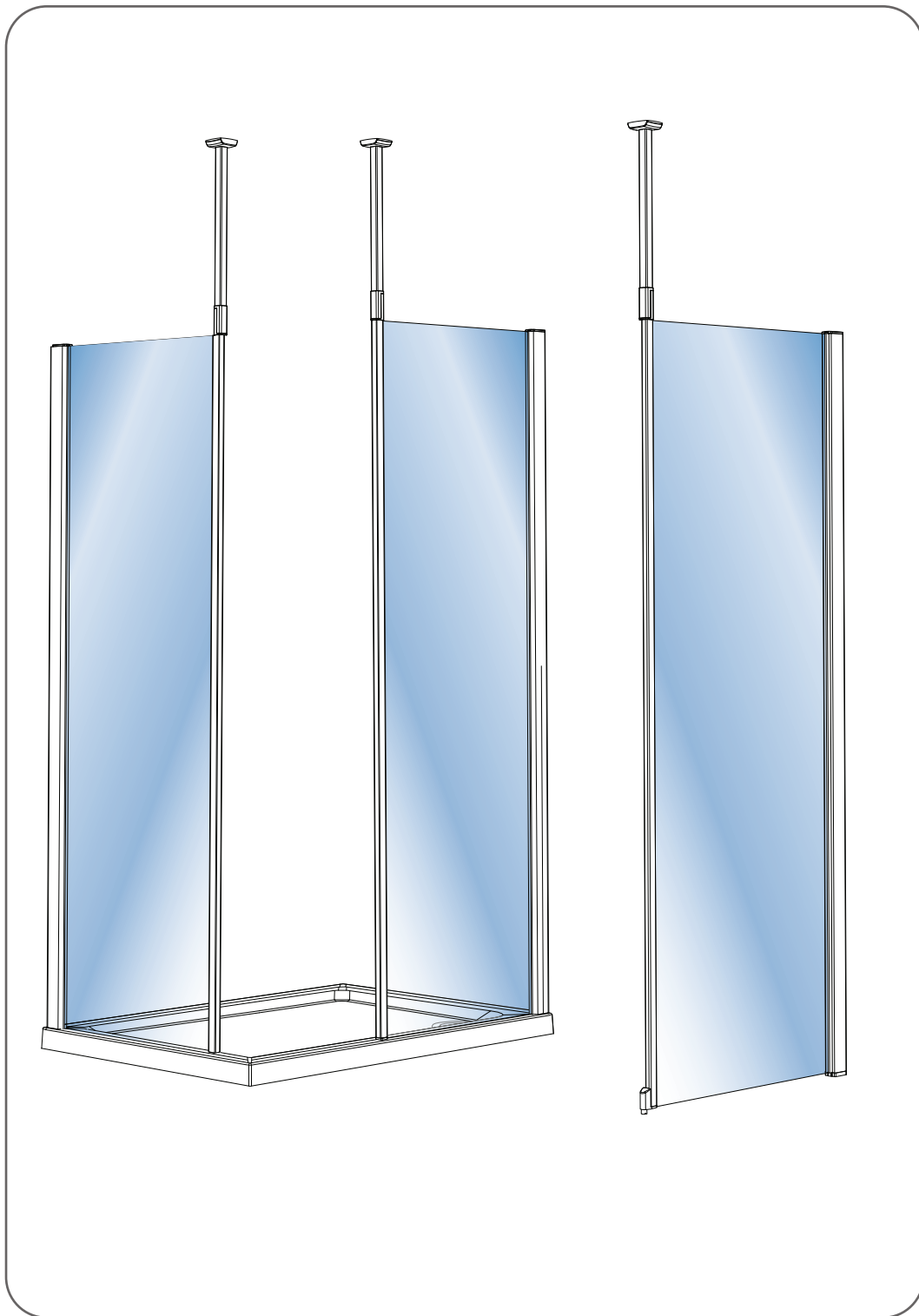


# Modular Shower Panel Installation Instructions



## Step-by-Step Installation Guide

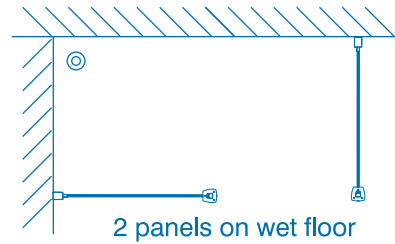
# BEFORE YOU START!

Modular Shower Panels are suitable for both tray or wet floor fitting as standard. They can be used singly or in combination, for suggested formats refer to the following illustrations. All panels feature a ceiling fix method that avoids the need for horizontal brace bars.

Available sizes are 700 / 800 / 900 / 1000 / 1200mm



Single panel on tray



2 panels on wet floor

## Pre Installation Checks

Before starting we recommend the following checks:

- All parts are present and undamaged – refer to the exploded parts diagram.
- The wet floor area is fully tiled with appropriate drainage falls or the tray is correctly installed, tiled down to, and sealed in accordance with the manufacturer's guidelines.
- Sufficient space is available on the floor/tray top to fit the product.
- The showering area will be fully accessible.
- Ensure the area is clean, dry and dust free.
- Have the correct tools available.
- Read the instructions in full.

## Care of product

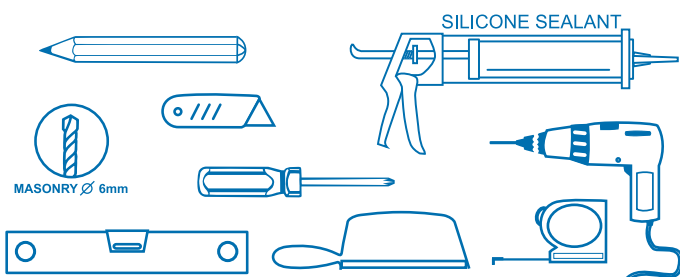
- For the metal components we recommend a non-abrasive cleaner with a PH value between 4-8. Use of cleaners with a PH value outside the specified range can cause damage to the aluminium components.
- Easy clean glass is provided as standard on both sides of each panel.

## Safety

- This product is heavy and will require 2 people for handling and installation.
- Handle the glass with care – always support the edge on cardboard during installation.
- When drilling for wall and ceiling fixing check first for hidden pipes or cables.

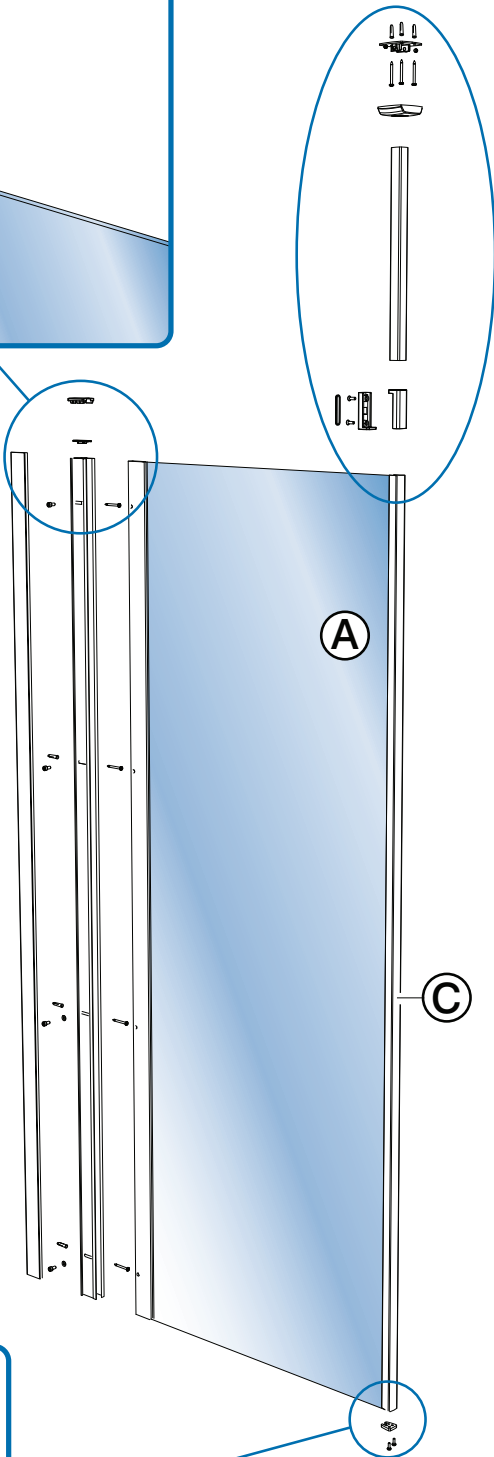
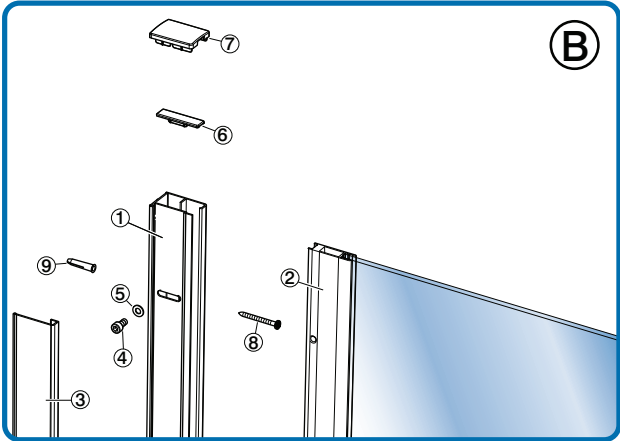
## Disclaimer

- Please inspect the contents of this pack carefully and notify the retailer immediately of any damage or faults. Aqualux products Ltd cannot be held responsible for any installation costs that may arise from a damaged or faulty product being installed.

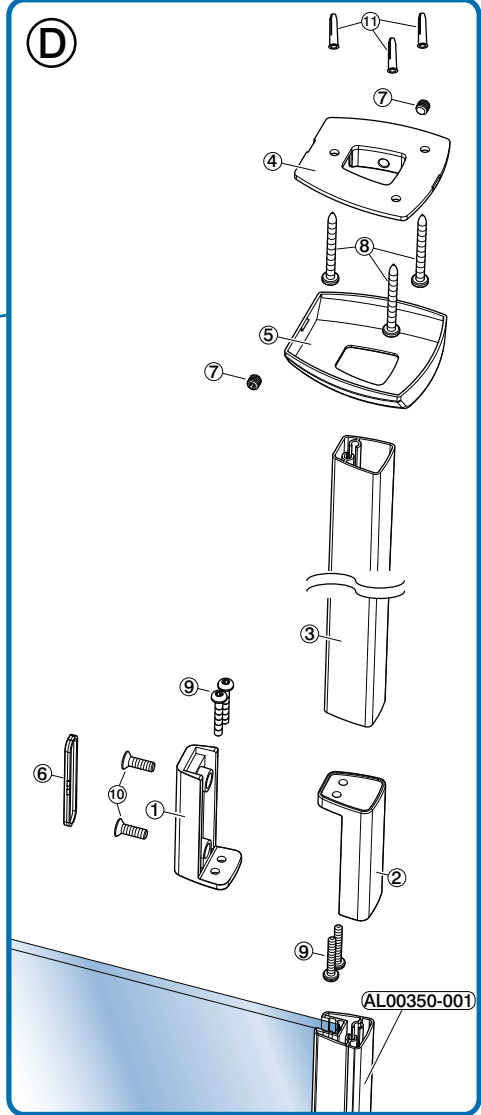


# Components

SA00336



SA00354

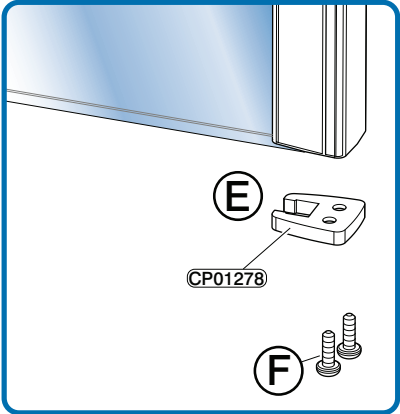
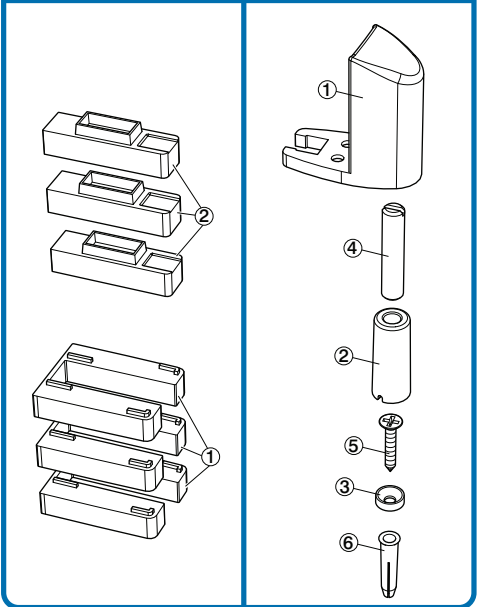


OPTIONAL WET FLOOR KIT  
FEN0735AQU

SA00352

G

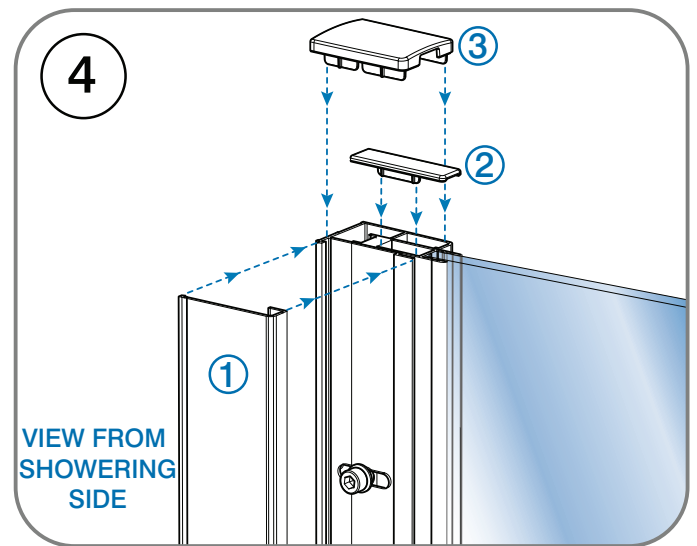
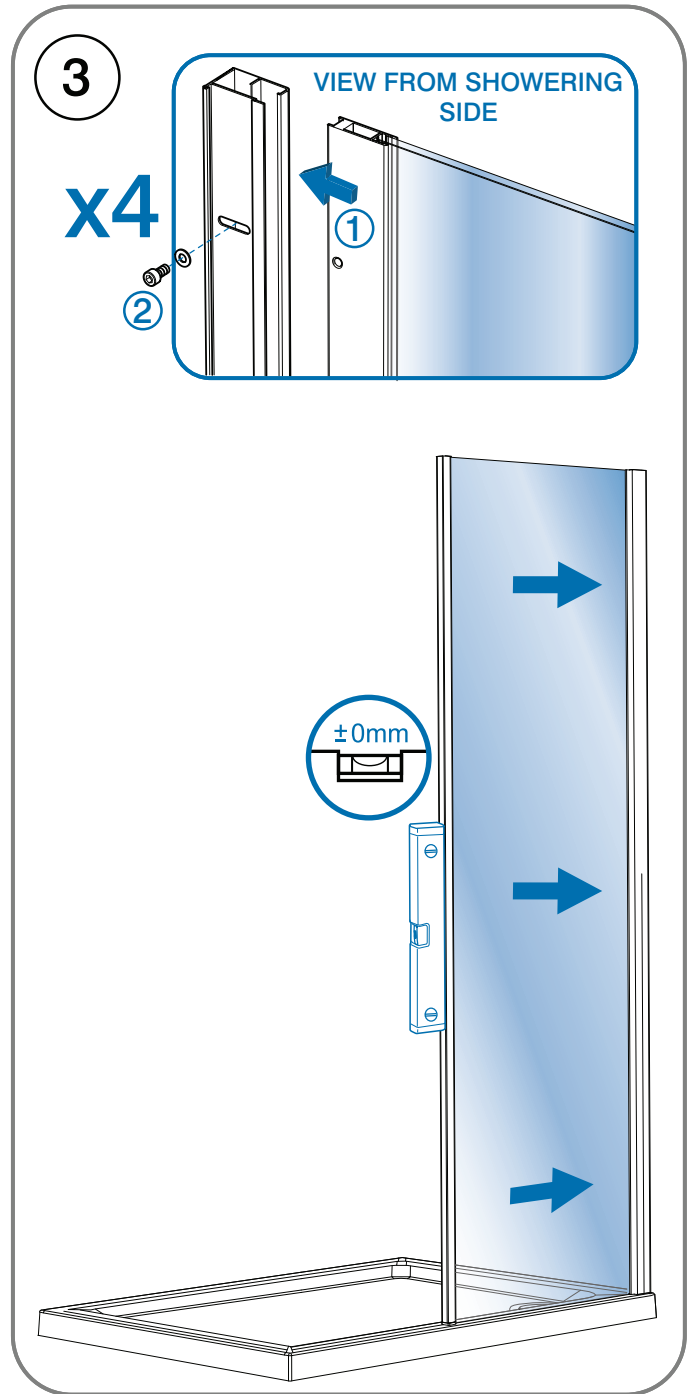
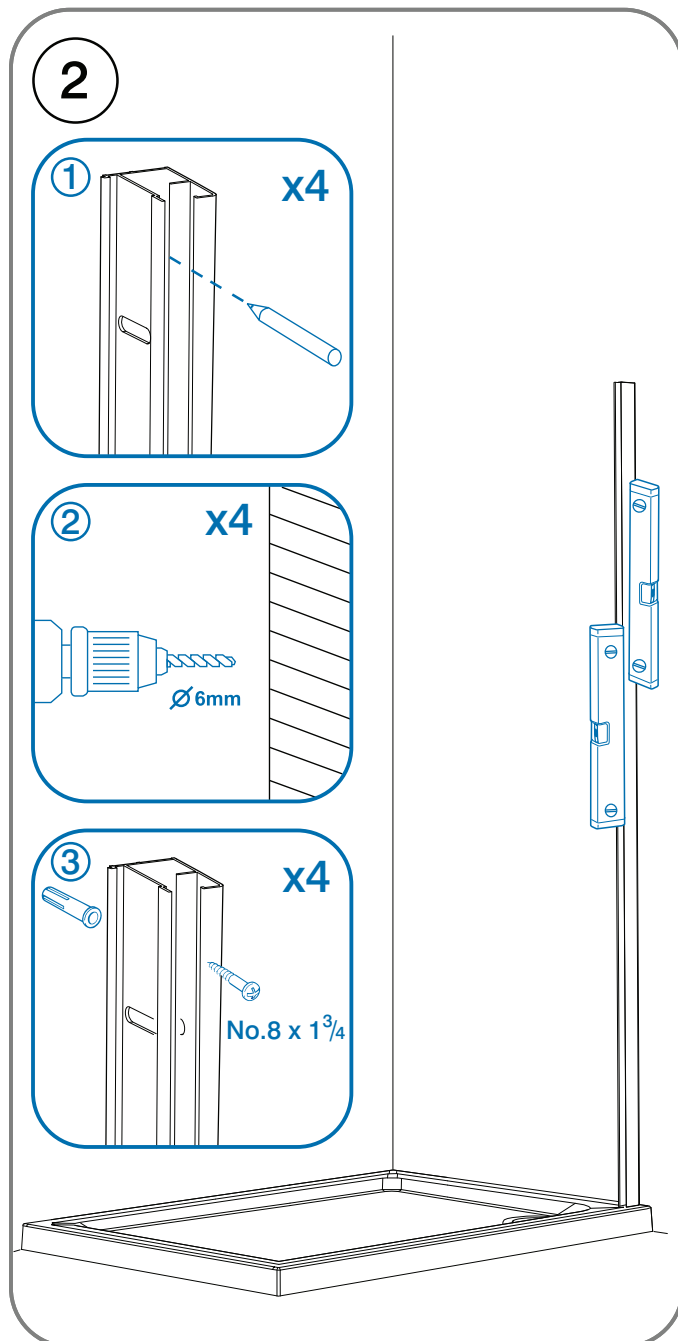
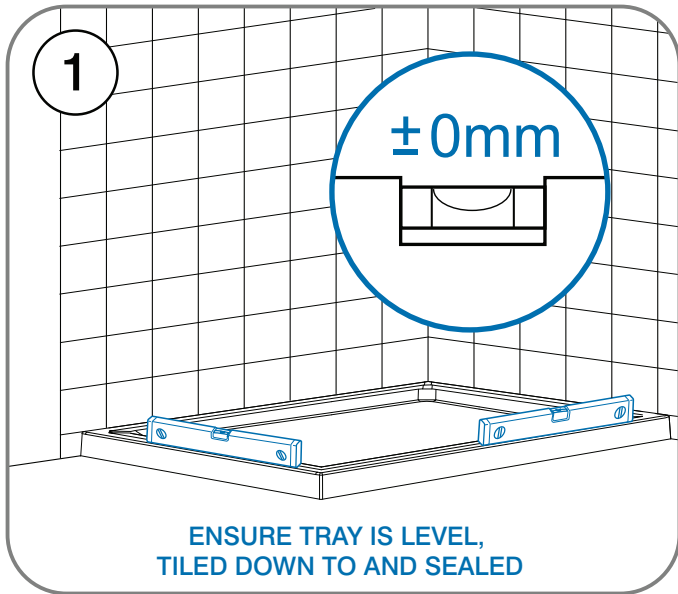
SA00359



# Components List

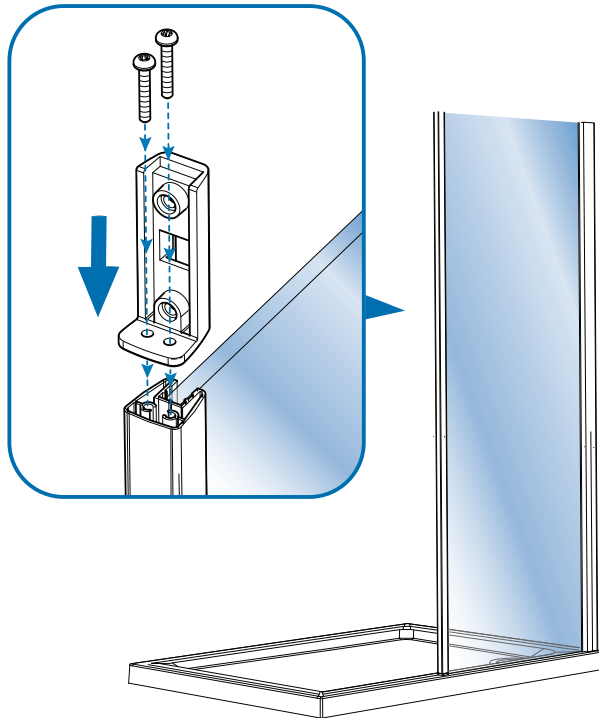
ITEM NO.	PART NUMBER	DESCRIPTION	QTY.
A	GS00610	Aquaspace 700 Modular Shower Panel Glass	1
	GS00611	Aquaspace 800 Modular Shower Panel Glass	1
	GS00612	Aquaspace 900 Modular Shower Panel Glass	1
	GS00613	Aquaspace 1000 Modular Shower Panel Glass	1
	GS00614	Aquaspace 1200 Modular Shower Panel Glass	1
B	SA00336	Aquaspace Modular Shower Panel Wall Channel Set	1
1	AL00256-002	Aquaspace Modular Shower Panel Wall Channel	1
2	AL00255-002	Aquaspace Modular Shower Panel Glass Stile	1
3	AL00257-002	Aquaspace Modular Shower Panel Wall Channel Trim	1
4	M6 x 12 Cap Head	M6 x 12 Cap Head Screw Stainless Steel	4
5	6 ID x 1 Thk Washer	6 ID x 1 Thk Washer Stainless Steel	4
6	CP00603	Walk Through Stile Top Cap	1
7	CP00604	Walk Through Wall Channel Top Cap	1
8	No8 x 1 Three Quarter	No8 x 1 Three Quarter	4
9	Wall Plug	Wall Plug	4
C	AL00350-001	Modular Shower Panel Glass Edge Section	1
D	SA00354	AQU Modular Shower Panel Ceiling Fix Set	1
1	CP01273	AQU Modular Shower Panel Glass Edge Bracket Part A	1
2	CP01274	AQU Modular Shower Panel Glass Edge Bracket Part B	1
3	AL00351-001	Modular Shower Panel Glass Edge Section No Glass Pocket	1
4	CP01275	AQU Modular Shower Panel Glass Edge Ceiling Plate	1
5	CP01276	AQU Modular Shower Glass Panel Edge Ceiling Plate Trim	1
6	CP01277	AQU Modular Shower Glass Panel Edge Bracket Part A Trim	1
7	M6 x 6 Socket Set Screw SS	M6 x 6 Socket Set Screw SS	2
8	No8 x 1 Three Quarter	No8 x 1 Three Quarter	3
9	No 8 x 1 Pan Pozi SS ST	No 8 x 1 Pan Pozi SS ST	4
10	M5 x 16 Countersunk Head	M5 x 16 Countersunk Head Socket Screw SS	2
11	Wall Plug	Wall Plug	3
E	CP01278	AQU Modular Shower Panel Wet Floor Foot Blank	1
F	No 8 x 1 Pan Pozi SS ST	No 8 x 1 Pan Pozi SS ST	2
G	FEN0735AQU	Aquaspace Modular Shower Panel Wet Floor Fitting Kit	1
	SA00352	Aquaspace Modular Shower Panel Wall Channel Packer Set	1
1	CP01248	Aquaspace Modular Shower Panel Wall Channel Packer	3
2	CP01247	Aquaspace Modular Shower Panel Vertical Stile Packer	3
	SA00359	AQU Modular Shower Panel Glass Edge Wet Floor Foot	1
1	CP01279	AQU Modular Shower Panel Wet Floor Foot Body	1
2	CP01256	Aquaspace Modular Shower Panel Foot	1
3	CP01259	Aquaspace Modular Shower Panel Foot Location	1
4	CP01257	Aquaspace Modular Shower Panel Foot Studding	1
5	No 8 x 1 CSK Pozi SS ST	No 8 x 1 CSK Pozi SS ST	1
6	Wall Plug	Wall Plug	1

# Tray Fit Instructions

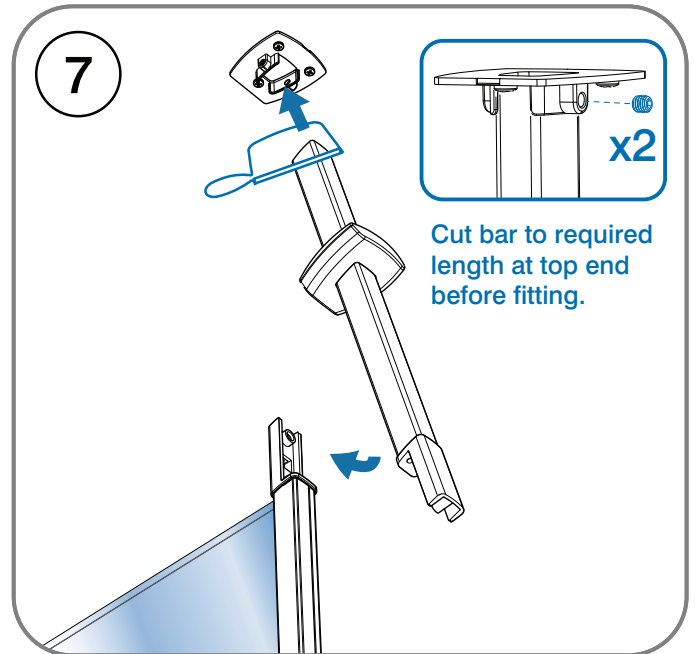


# Tray Fit Instructions

5



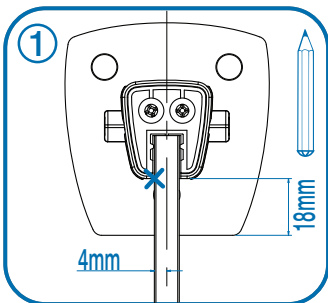
7



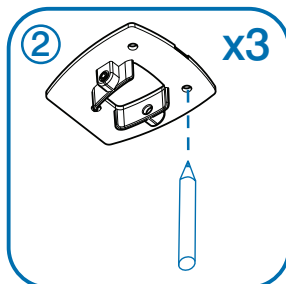
6

Ensure ceiling is sufficient to screw into and piping / cabling is avoided - If necessary reinforce area from above.

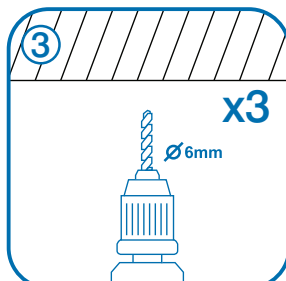
1



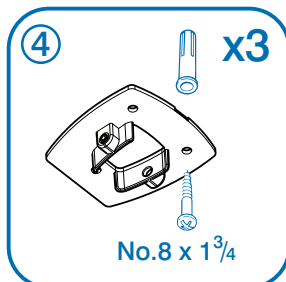
2



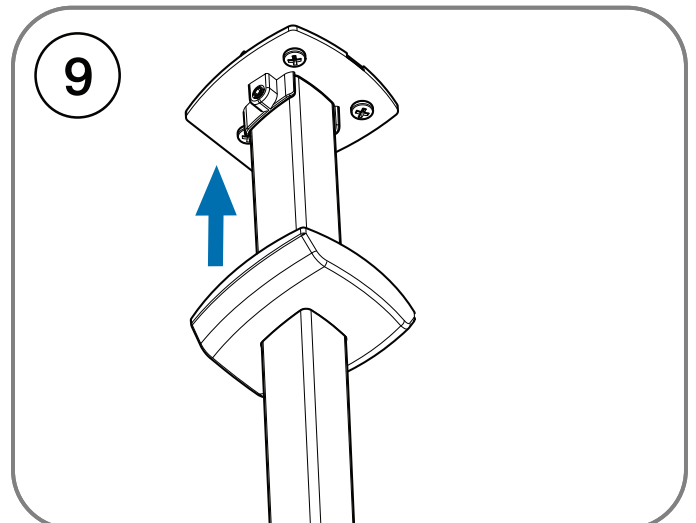
3



4



9



10

See final page for sealing requirements.

# Wet Floor Fit Instructions

1

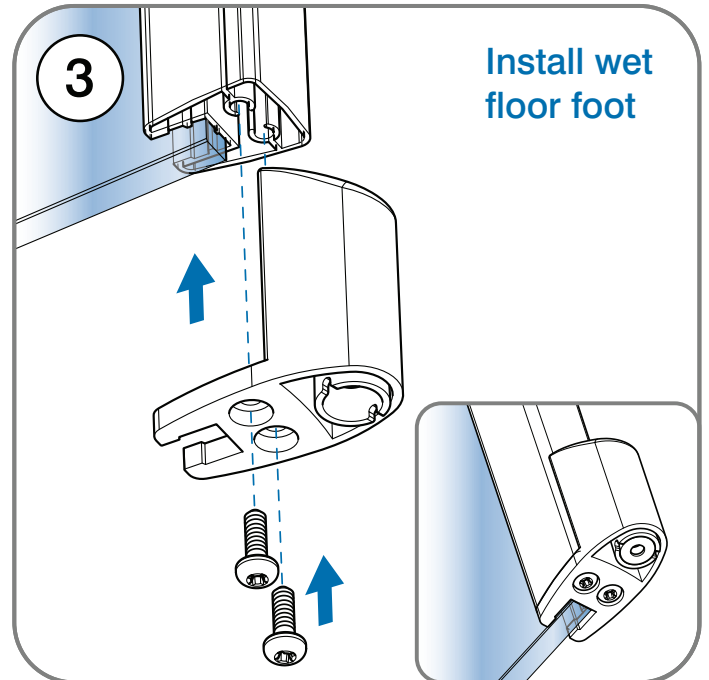
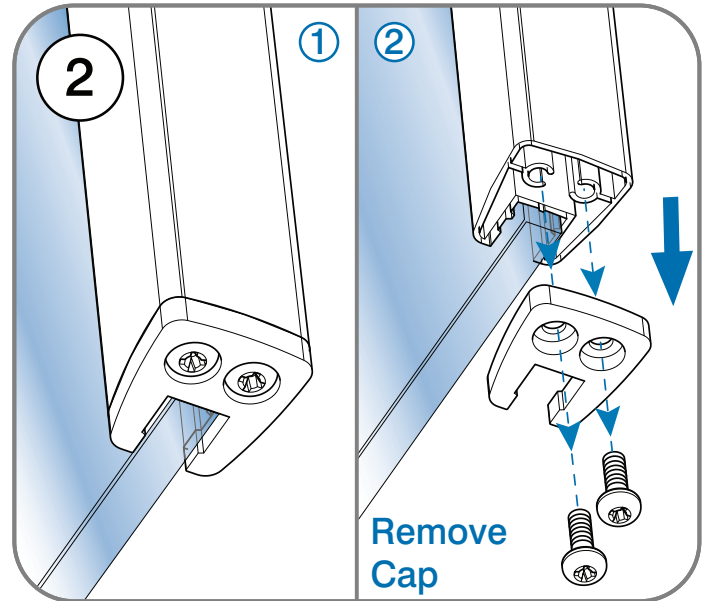
Determine the floor gradient with a spirit level before installation begins. Use packers provided and adjust leg on the foot as required.

Floor gradient running down towards wall channel

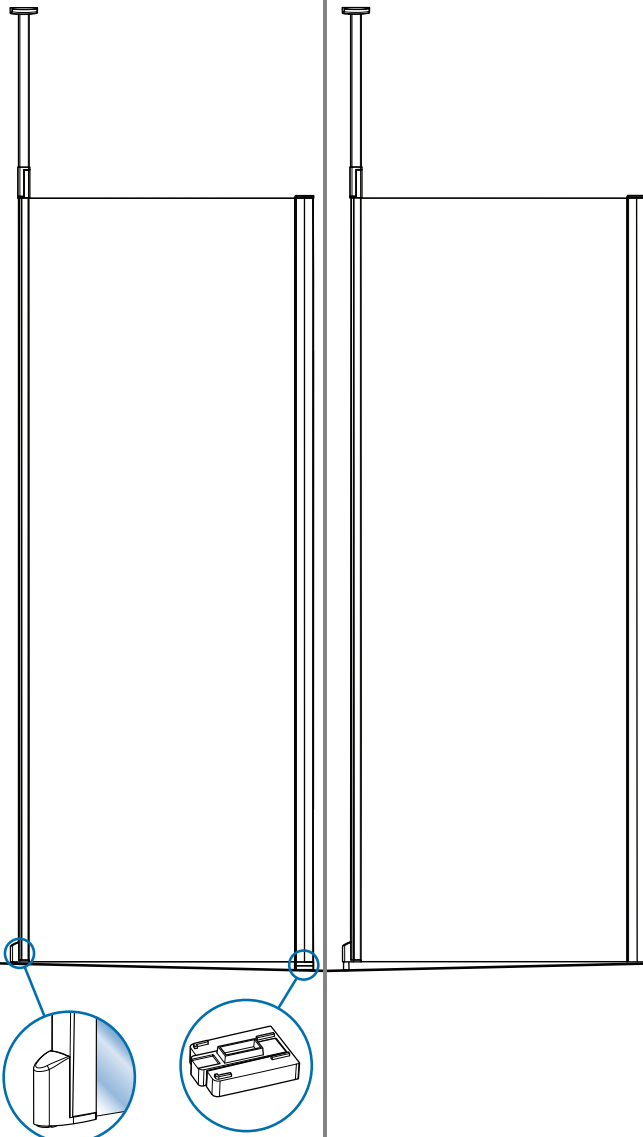
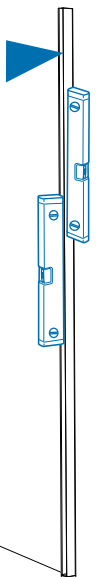
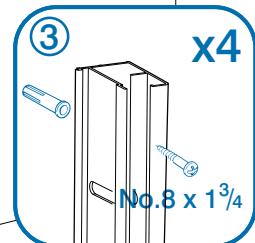
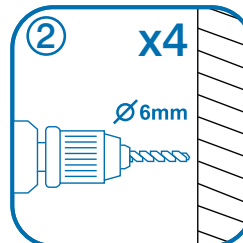
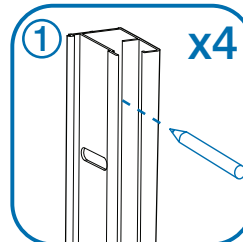
- Add packer
- Screw in foot

Floor gradient running down away from wall channel

- Remove packers
- Screw out foot



4

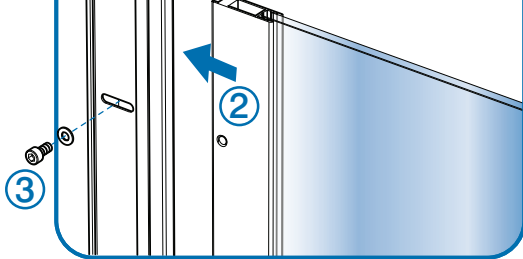




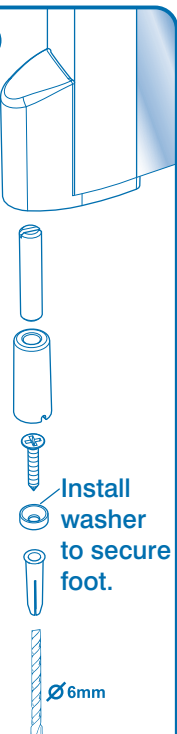
# Wet Floor Fit Instructions

5

**VIEW FROM SHOWERING  
SIDE**



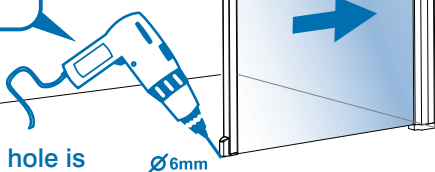
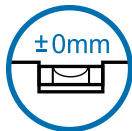
①



- Install washer to secure foot.

Ø 6mm

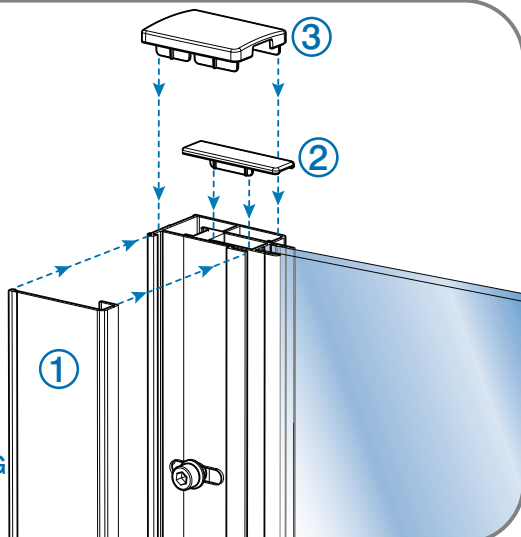
±0mm



Ensure location hole is  
silicone sealed before inserting screw

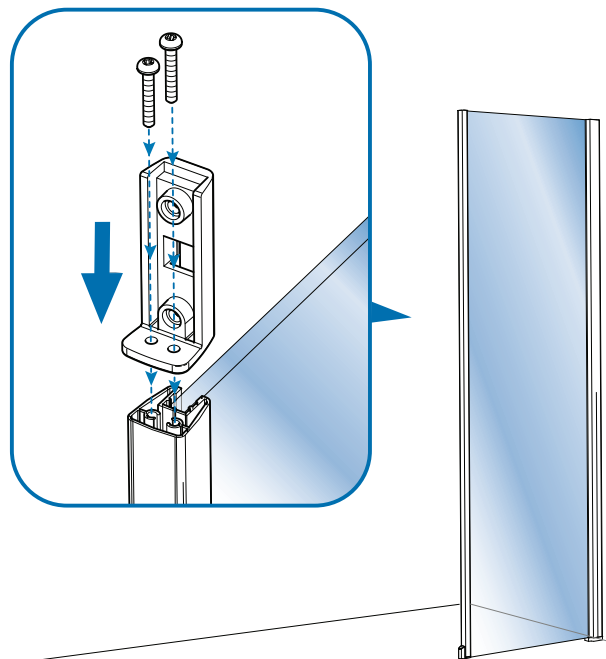
Ø 6mm

6



VIEW FROM  
SHOWERING  
SIDE

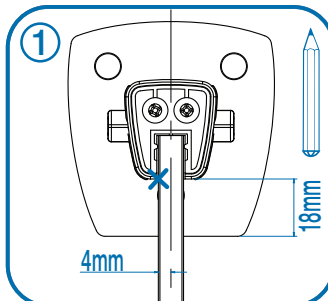
7



8

Ensure ceiling is sufficient to screw into and piping / cabling is avoided - If necessary reinforce area from above.

①

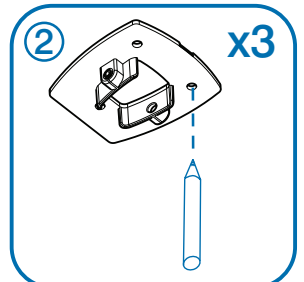


4mm

18mm

②

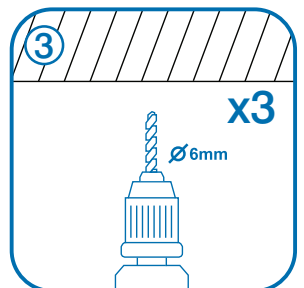
x3



3

x3

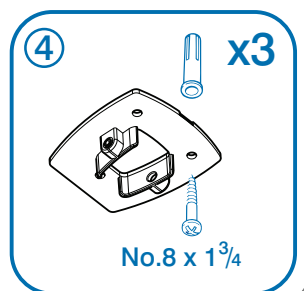
Ø 6mm



④

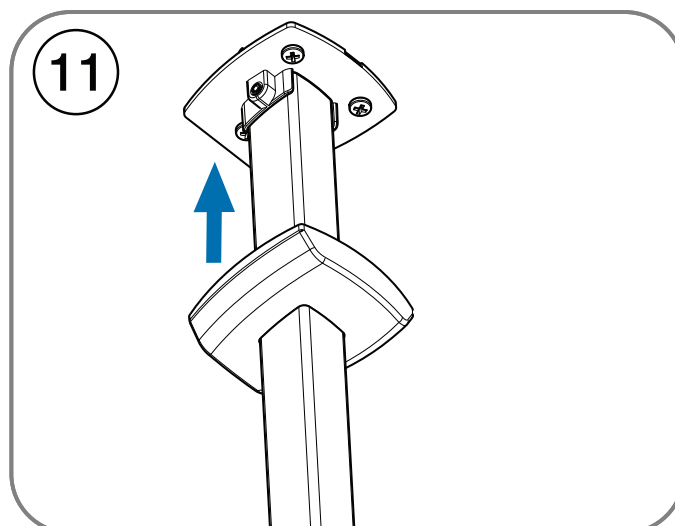
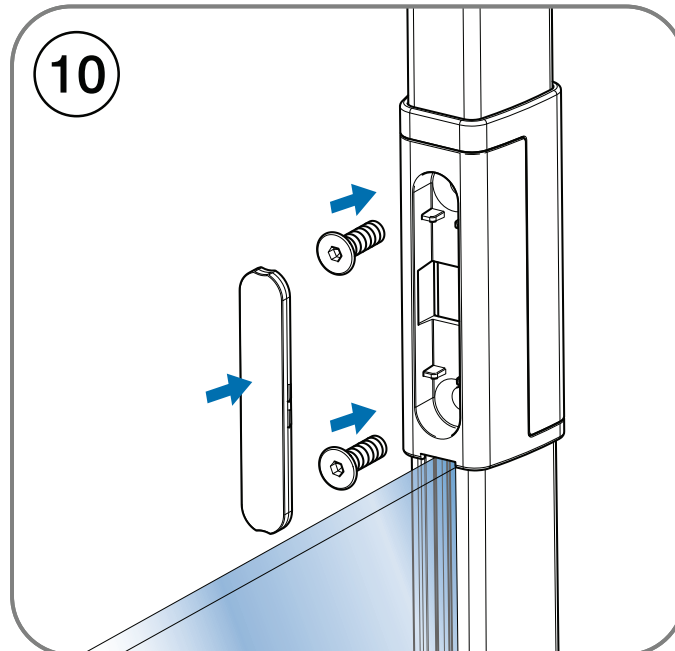
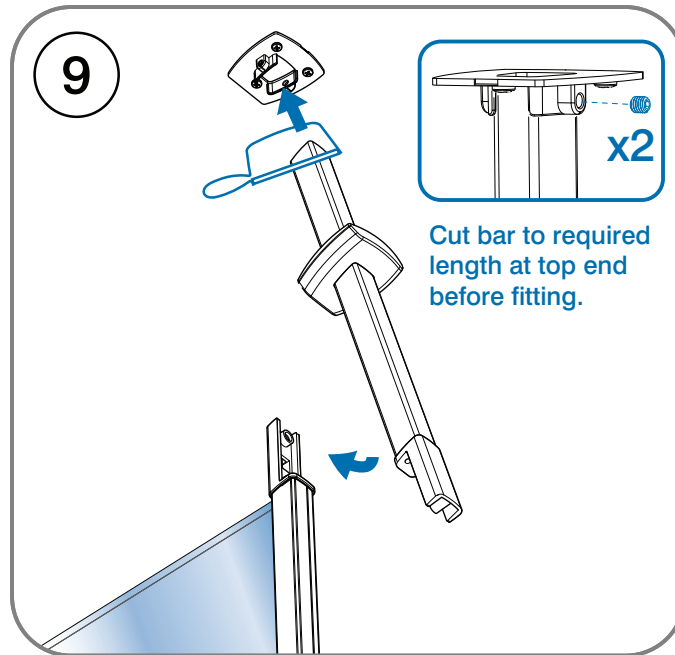
x3

No.8 x 1<sup>3/4</sup>



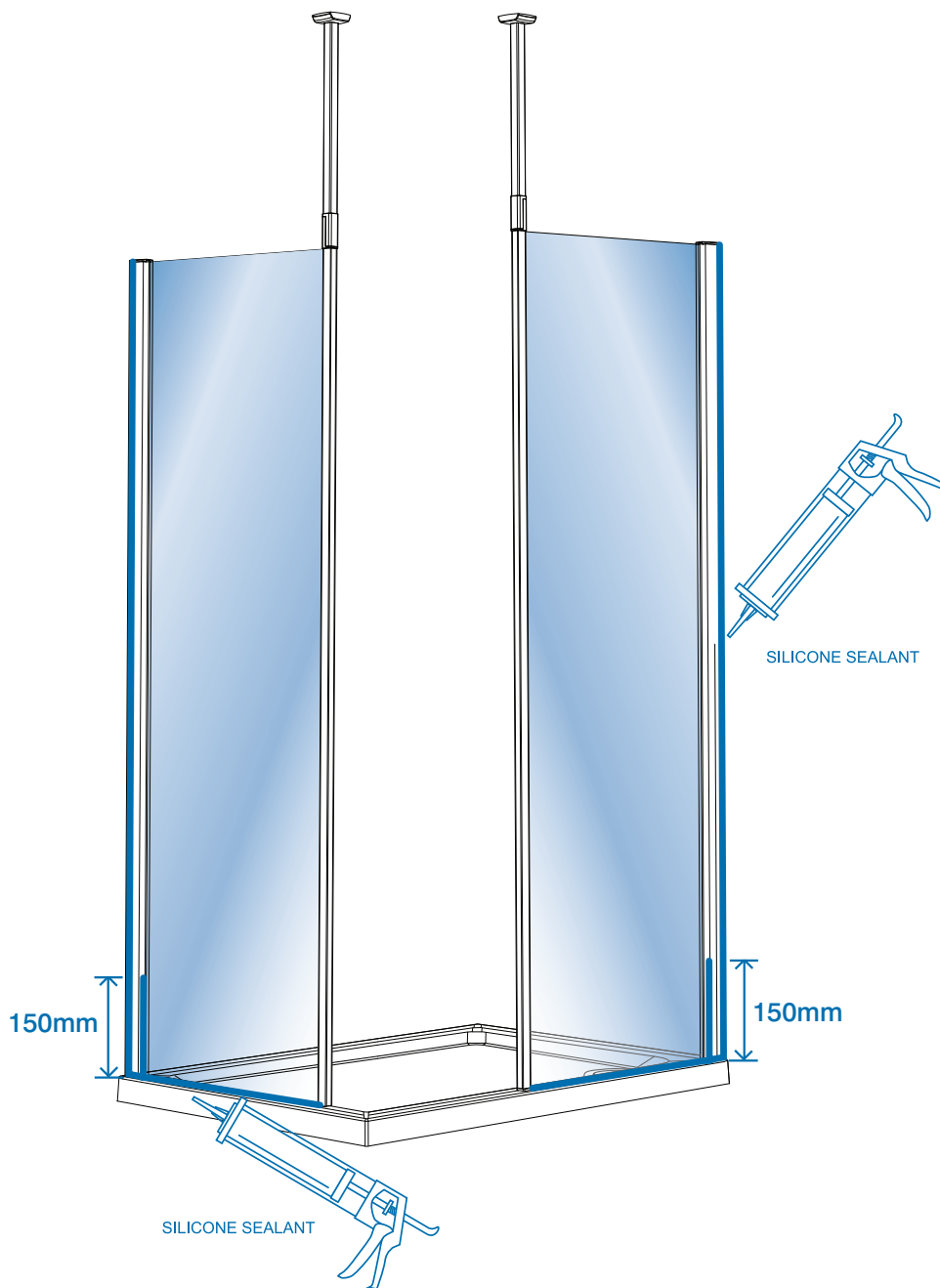


# Wet Floor Fit Instructions



# Sealing the product

## Tray Fit



## Wet Floor Fit

