

**MODEL
NUMBER:**

ALL1000



Patent #5105349 & 7410150 B1

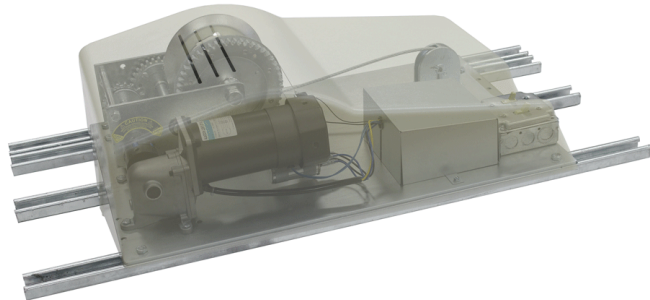
The ALL1000 is a 'residential grade' motorized winch for the raising and lowering of a light fixture. This 'standard mount' lift is designed to be installed in accessible locations, directly above the fixture. Please see page 30 for 'standard mount' vs 'remote mount' diagram.

Specifications

Maximum Lifting Capacity.....	1000 lbs.
Application.....	Residential (Plastic dust cover and Romex)
Voltage.....	110V
Mounting Location.....	Standard Mount Directly above fixture only
Winch Cable Length.....	35 ft.
Light Wattage Capacity.....	1 x 20 amp circuit - 2200 watts
Controller.....	Smart-Lift
Controller Wire.....	50 ft.
Dimensions of unit.....	18" wide x 27.5" long x 9" high Mounted on four 38" channel struts
Shipping Weight.....	98 lbs.

Upgrades

Winch Cable Length.....	65 ft. 90 ft. 120 ft.
Light Wattage Capacity.....	2 x 15 amp circuits - 3300 watts
Controller Wire.....	100 ft.



ALADDIN®

